

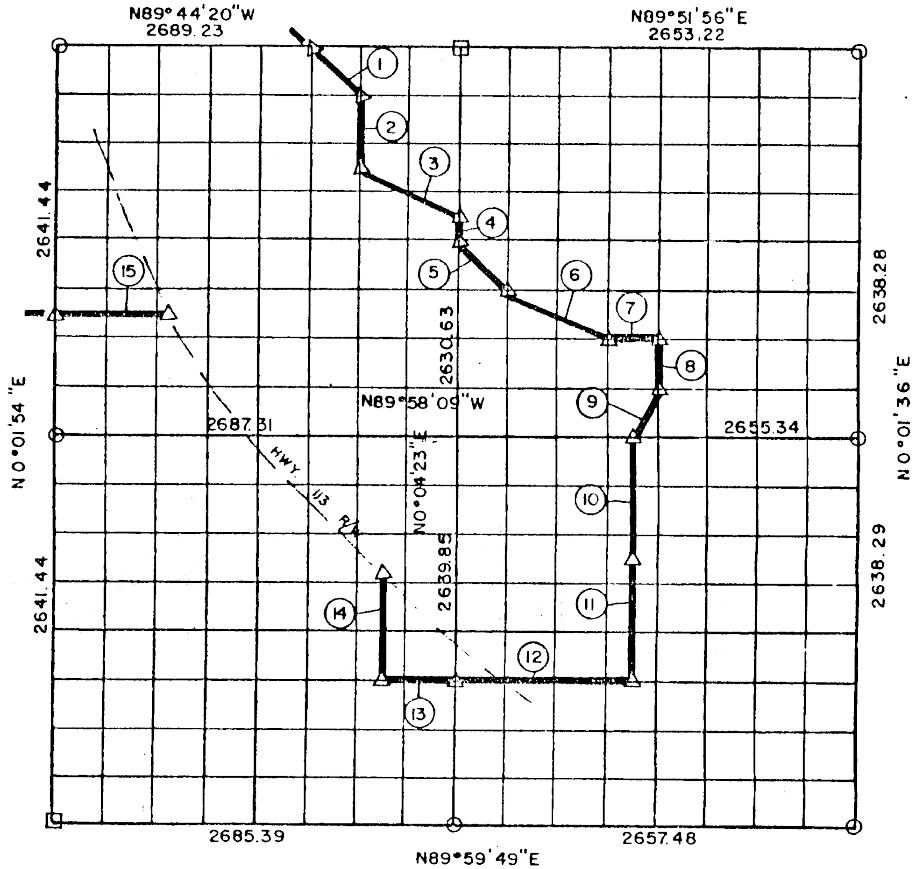


PARTIAL BOUNDARY SURVEYS  
AREA "B"

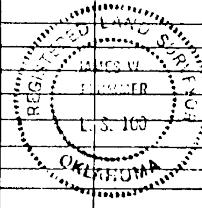
EUFAULA LAKE, OKLAHOMA

Performed Under Contract Number DACW 56-77-C-0103

SEC. 7, T 6 N, R 15 E PITTSBURG COUNTY, OK.



Course No.	Distance	Bearing	Course No.	Distance	Bearing	Course No.	Distance	Bearing
1	467.29	N44°57'31"W	15	626.75	S89°53'49"E			
2	493.74	N0°06'13"E						
3	739.77	N63°25'08"W						
4	164.41	N0°04'23"E						
5	466.74	N45°14'16"W						
6	740.34	N63°37'54"W						
7	331.85	S89°59'20"W						
8	329.31	N0°02'59"E						
9	369.82	N26°47'32"E						
10	824.74	N0°03'10"E						
11	824.74	N0°03'10"E						
12	1162.30	N89°59'25"W						
13	497.88	N89°59'24"W						
14	554.23	N0°05'25"E						



Field Book No. E-1292

Date: 1977

PLUMMER-BRUMMETT, INC.  
CONSULTING ENGINEERS & SURVEYORS  
1736 E. 5th Pl., Tulsa, Okla., 74105, Tel. (918) 933-2251

CERTIFICATE OF SURVEY  
I HEREBY CERTIFY THAT THE  
ABOVE PLAT IS A TRUE AND  
CORRECT REPRESENTATION OF  
THE SURVEY MADE IN SECT  
7, T 6 N, R 15 E, PITTSBURG  
COUNTY, OKLAHOMA.

Under the Supervision of

U.S. ARMY ENGINEER DISTRICT, TULSA  
CORPS OF ENGINEERS

*James W. Plummer*  
REGISTERED LAND SURVEYOR

LEGEND

- A MONUMENT
- ORIGINAL CORNER
- 1" IRON PIN