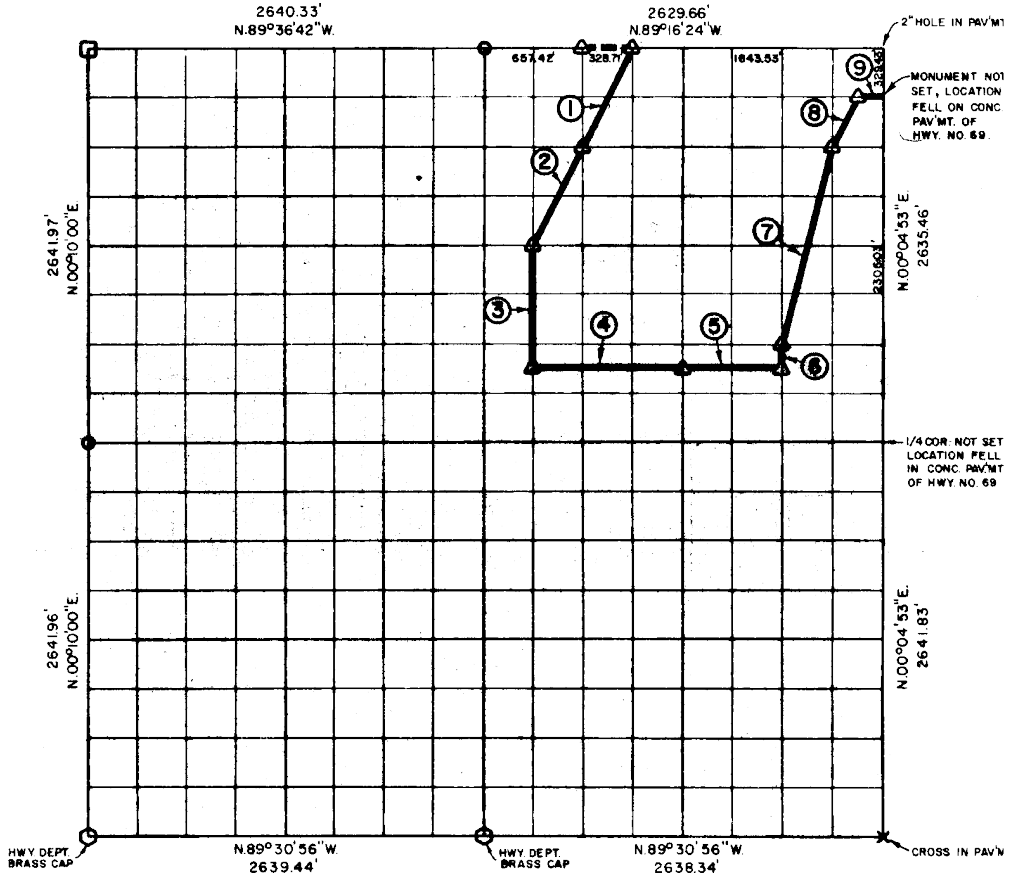


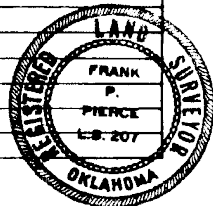
PARTIAL BOUNDARY SURVEYS  
 EUFAULA LAKE  
 OKLAHOMA

Performed Under Contract Number DACW 56-75-C-0126

SEC. 9, T. 6 N., R. 15 E., COUNTY PITTSBURG



Course No.	Distance	Bearing	Course No.	Distance	Bearing
1	735.58'	S.26°42'24\"W.			
2	735.57'	S.26°42'24\"W.			
3	826.60'	S.00°09'52\"W.			
4	987.43'	S.89°28'07\"E.			
5	658.29'	S.89°28'07\"E.			
6	164.89'	N.00°06'18\"E.			
7	1356.34'	N.14°08'06\"E.			
8	366.77'	N.26°43'12\"E.			
9	164.39'	S.89°18'12\"E.			



CERTIFICATE OF SURVEY  
 I hereby Certify That The Above Plat is a True and Correct Representation of The Survey Made in Section 9, T. 6 N., R. 15 E., PITTSBURG COUNTY, OKLAHOMA.  
Frank P. Pierce  
 Registered Professional Engineer  
 Registered Land Surveyor

Field Book No. E-1203 Date 7-11-75

MAPCO ENGINEERING CORPORATION  
 Under The Supervision Of

U.S. ARMY ENGINEER DISTRICT, TULSA  
 CORPS OF ENGINEERS

SHEET 1 of 2

LEGEND  
 ▲ MONUMENT  
 □ ORIGINAL CORNER  
 ○ IRON PIN

532

