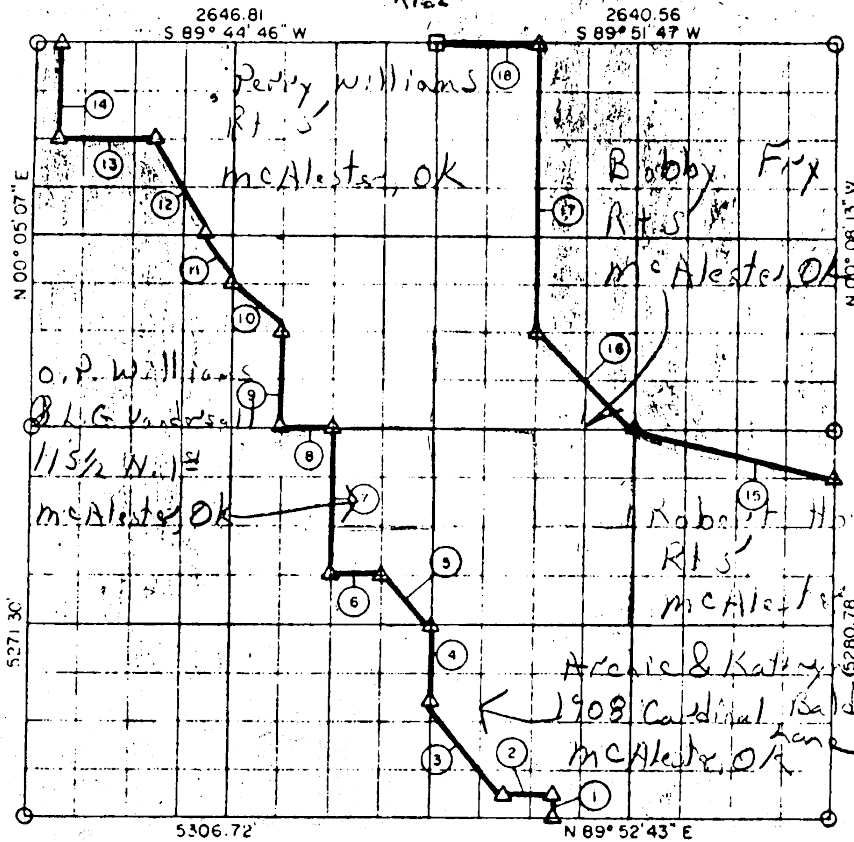


EC. 11, T 6 N, R 16 E, PITTSBURGH COU



Course No.	Distance	Bearing	Course No.	Distance	Bearing
1	164.92	N 00° 02' 29" W	13	661.92	S 89° 46' 25" W
2	331.62	S 89° 52' 38" W	14	658.76	N 00° 04' 48" E
3	825.15	N 37° 04' 10" W	15	1364.12	N 76° 08' 29" W
4	494.63	N 00° 00' 07" E	16	934.05	N 45° 08' 57" W
5	466.98	N 45° 12' 47" W	17	1981.23	N 00° 01' 58" W
6	331.44	S 89° 51' 52" W	18	660.14	S 89° 51' 47" W
7	589.04	N 00° 01' 22" E			
8	331.30	S 89° 51' 22" W		12,426.33	
9	659.91	N 00° 02' 00" E			
10	466.55	N 45° 10' 45" W			
11	368.00	N 26° 30' 56" W			
12	736.56	N 26° 39' 08" W			

Book No. E-971 Date: February, 1965

540

I, Jack R. Kalman, a Registered Professional Engineer, do hereby certify that the above plot is a true and accurate survey of Sec. 11, T 6 N, R 16 E as made under my supervision

12,426.33

Jack R. Kalman
 JACK R. KALMAN
 Reg. Prof. Engr. No. 2796