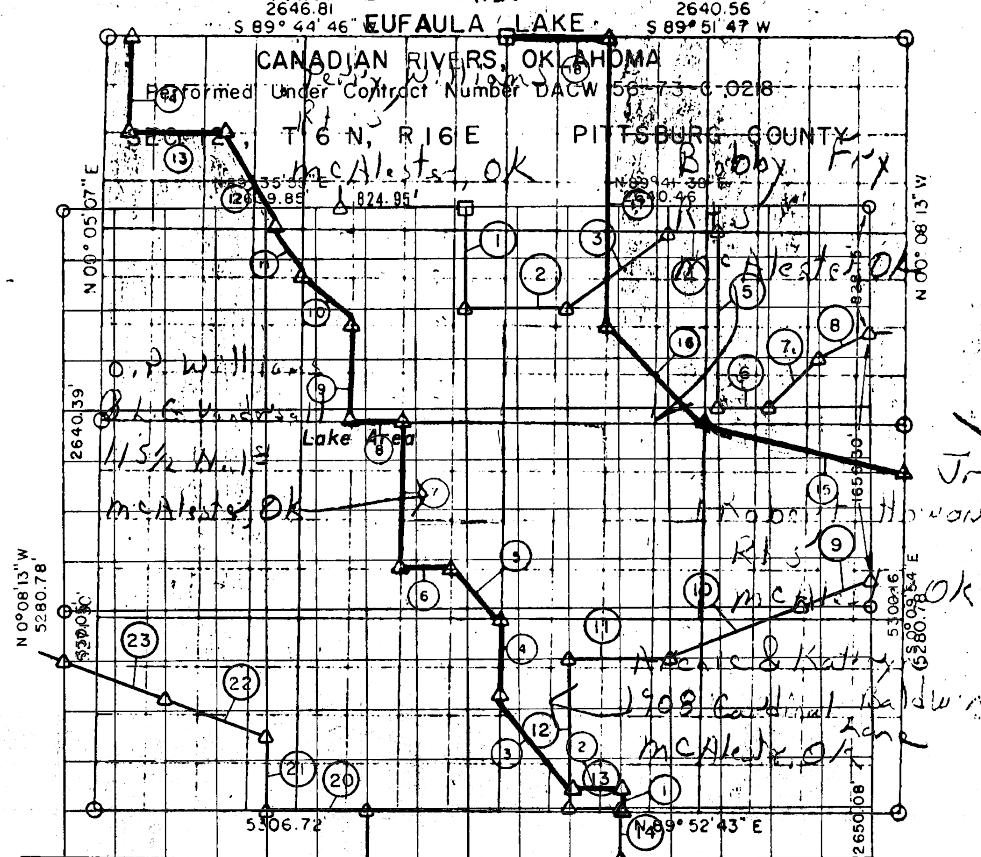


FILED
 PITTSBURG
 BOOK 357 PAGE 1-8-74
 DATE

EC. 11 T 6 N, 3 PITTSBURG COU
 PARTIAL BOUNDARY SURVEYS



Course No.	Distance	Bearing	Course No.	Distance	Bearing
1	164.92	N 00° 02' 29\" W	13	661.92	S 89° 46' 25\" W
2	331.62	S 89° 52' 38\" W	14	658.76	N 00° 04' 48\" E
3	825.19	N 37° 04' 10\" W	15	1364.12	N 76° 08' 29\" W
4	494.63	N 00° 00' 00\" E	16	934.05	N 45° 08' 57\" W
5	466.98	N 45° 12' 47\" W	17	1881.23	N 00° 01' 58\" W
6	331.42	S 89° 51' 52\" W	18	2660.14	S 89° 51' 47\" W
7	589.88	N 00° 01' 22\" E			
8	331.30	N 00° 01' 22\" E			
9	659.91	N 00° 02' 00\" E	13	330.11	N 89° 48' 01\" E
10	661.86	S 0° 09' 30\" E	14	330.90	S 0° 09' 39\" E
11	660.13	N 89° 42' 29\" E	15	934.85	S 44° 46' 17\" W
12	826.99	N 52° 48' 00\" E	16	330.76	S 0° 09' 33\" E
13	330.06	N 89° 41' 50\" E	17	330.13	S 89° 51' 01\" W
14	1158.97	S 0° 09' 45\" E	18	660.45	S 89° 51' 45\" W
15	330.08	N 89° 43' 21\" E	19	1322.12	N 0° 09' 11\" W
16	468.07	N 44° 40' 50\" E	20	660.33	S 89° 48' 25\" W
17	369.61	N 63° 05' 31\" E			
18	940.65	S 69° 09' 01\" W	21	495.55	N 0° 08' 52\" W
19	660.20	S 89° 45' 49\" W	22	704.87	N 69° 39' 13\" W
20	992.50	S 0° 09' 36\" E	23	704.82	N 69° 39' 13\" W

Field Book No. E-1190 Date: November, 1973
 I, Jack R. Ralston, a Registered Professional Engineer, do hereby certify that the above plot is a true and accurate survey of Sec. 11 T 6 N, R 16 E as made under my supervision

MCCOY, MECKLENBURG AND PARR, INC.

- ▲ MONUMENT
- ORIGINAL CORNER
- IRON PIN

Under the Supervision of
 U.S. ARMY ENGINEER DISTRICT, TULSA
 CORPS OF ENGINEERS

CERTIFICATE OF SURVEY

I HEREBY CERTIFY THAT THE ABOVE PLAT IS A TRUE AND CORRECT REPRESENTATION OF THE SURVEY AND MEASUREMENTS MADE THEREON.
 JACK R. RALSTON
 COUNTY OF OKLAHOMA, PITTSBURG
 Reg. Prof. Engr. No. 2706

ROBERT L. MCCOY

541

FILED
 PITTSBURG C T Y
 BOOK 357 PAGE 3
 DATE 1-8-74

EUFULA LAKE
 CANADIAN RIVERS, OKLAHOMA
 SECTION AND QUARTER SECTION CORNER
 REFERENCES FOR
 SEC. 12, T 6 N, R 16 E, I.M. PITTSBURG COUNTY

