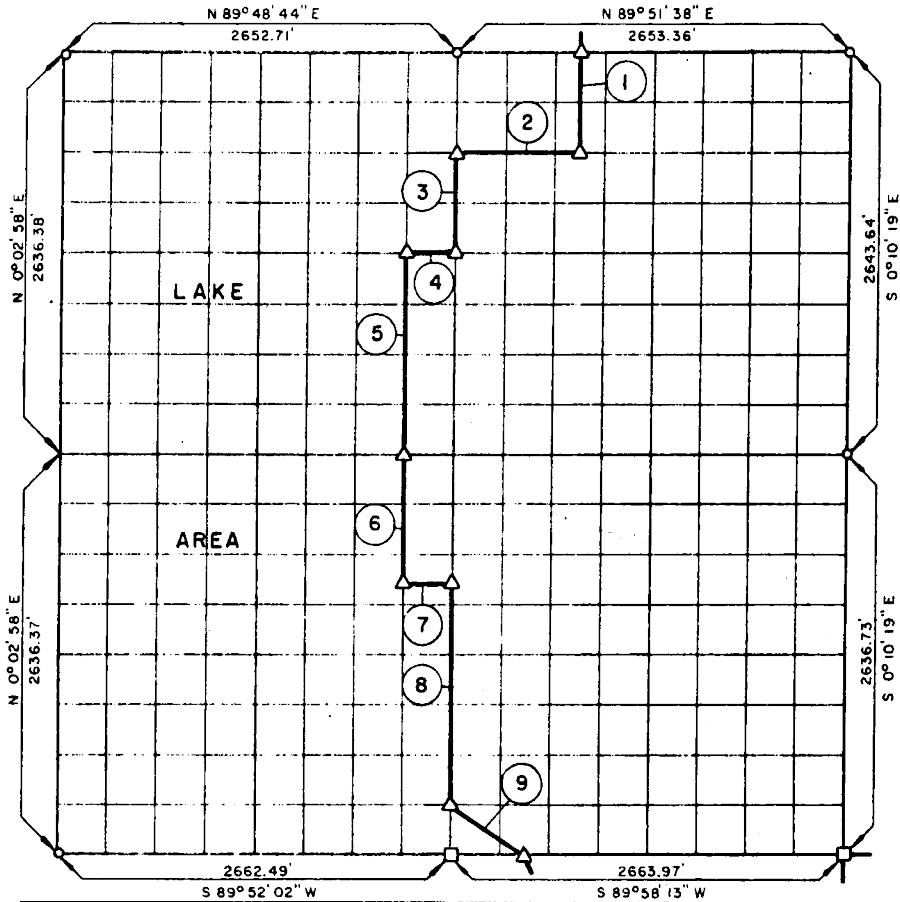


PARTIAL BOUNDARY SURVEYS  
 EUFAULA LAKE AREA "M"  
 CANADIAN RIVER, OKLAHOMA

SEC. 14 T-6-N R-16-E COUNTY PITTSBURG



Course No.	Distance	Bearing	Course No.	Distance	Bearing
1	660.48	S 0°05'34" E			
2	829.59	S 89°52'27" W			
3	660.28	S 0°03'24" E			
4	331.90	S 89°51'49" W			
5	1320.27	S 0°02'36" E			
6	823.26	S 0°02'36" E			
7	332.39	N 89°54'00" E			
8	1481.70	S 0°03'24" E			
9	598.38	S 56°38'40" E			

Field Book No. E-1179, Date 9-18-73

**CERTIFICATE OF SURVEY**  
 I HEREBY CERTIFY THAT THE ABOVE PLAT IS A TRUE AND CORRECT REPRESENTATION OF THE SURVEY MADE IN SECTION 14, T-6-N, R-16-E, PITTSBURG COUNTY, OKLAHOMA.  
*[Signature]*  
 REGISTERED LAND SURVEYOR

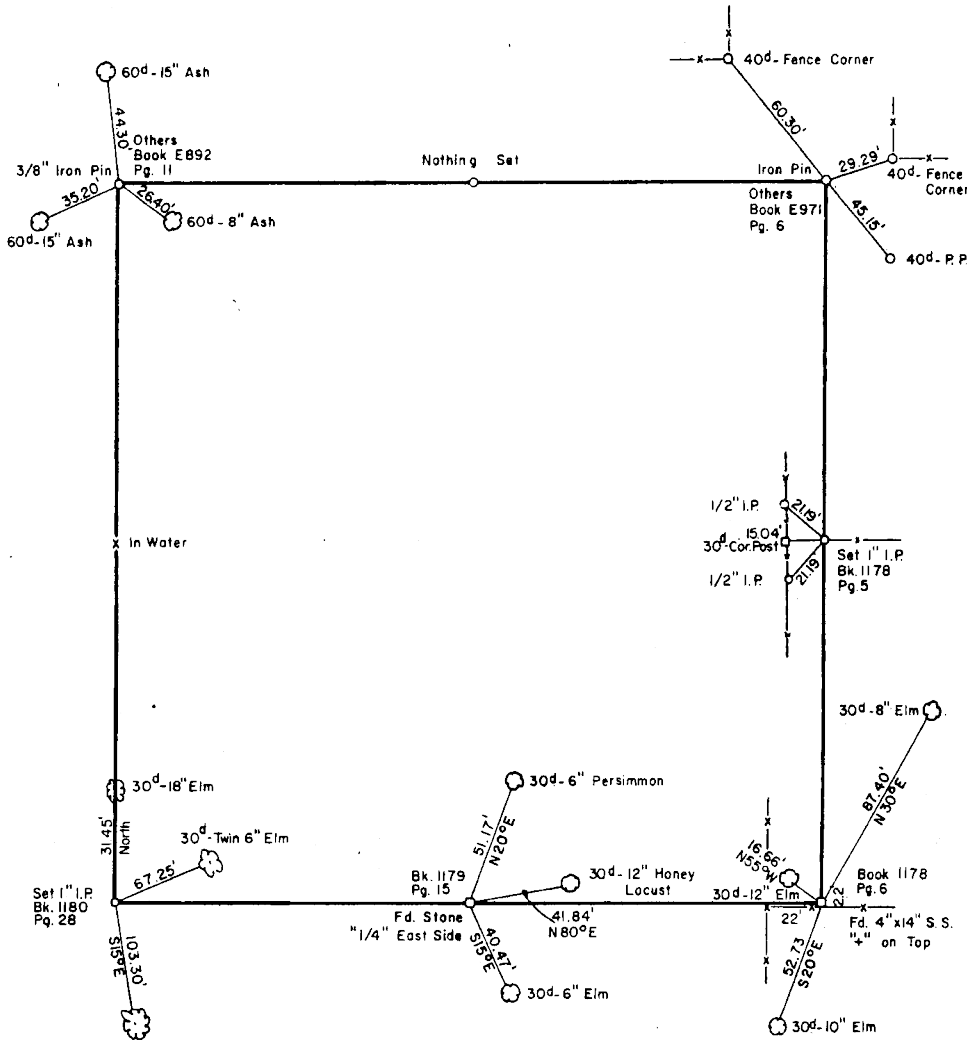
**K.N. COX & ASSOCIATES - ENGINEERS**  
 Under the Supervision of  
**U.S. ARMY ENGINEER DISTRICT, TULSA**  
**CORPS OF ENGINEERS**  
 SHEET 1 of 2

**LEGEND**  
 ▲ MONUMENT  
 ○ ORIGINAL CORNER  
 ○ IRON PIN

REVISED; 9-18-73

PARTIAL BOUNDARY SURVEYS  
 EUFAULA LAKE AREA "M"  
 CANADIAN RIVER, OKLAHOMA

SEC. 14 T-6-N R-16-E COUNTY PITTSBURG



Field Book No. E1179 Date 9-1-72

K.N. COX & ASSOCIATES - ENGINEERS

Under the Supervision of

U.S. ARMY ENGINEER DISTRICT, TULSA  
 CORPS OF ENGINEERS

SHEET 2 of 2

LEGEND

- △ MONUMENT
- ORIGINAL CORNER
- IRON PIN

REVISED; 9-18-73

*Jack Cox*