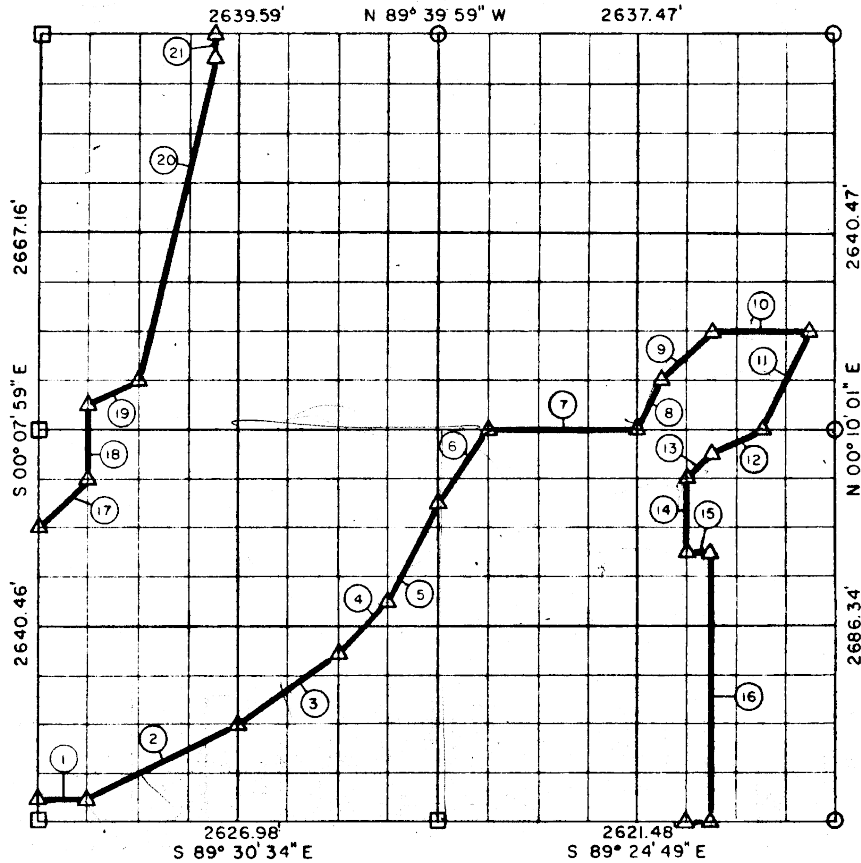


Sec. 16, T 6 N, R 16 E, PITTSBURG COUNTY



Course No.	Distance	Bearing	Course No.	Distance	Bearing
1	328.41'	S 89° 32' 14" E	17	465.15'	N 44° 53' 50" E
2	1099.40'	N 63° 35' 03" E	18	496.98'	N 0° 07' 02" W
3	821.67'	N 53° 04' 08" E	19	368.53'	N 63° 12' 19" E
4	466.18'	N 44° 49' 11" E	20	2216.71'	N 12° 47' 53" E
5	740.94'	N 26° 20' 29" E	21	166.33'	N 0° 04' 39" W
6	596.87'	N 33° 24' 27" E		1496.39	
7	986.04'	S 89° 57' 22" E			
8	369.48'	N 26° 30' 06" E			
9	466.40'	N 44° 56' 31" E			
10	657.87'	S 89° 53' 05" E			
11	738.18'	S 26° 35' 45" W			
12	369.05'	S 63° 03' 59" W			
13	234.55'	S 44° 34' 21" W			
14	501.94'	S 0° 06' 08" W			
15	164.19'	S 89° 47' 11" E			
16	1841.52'	S 0° 06' 47" W			

Book No. E-970

Date: February, 1965

552

I, Jack R. Kalman, a Registered Professional Engineer, do hereby certify that the above plat is a true and accurate survey of Sec. 16, T 6 N, R 16 E as made under my supervision.

14,096.39

Jack R. Kalman
 JACK R. KALMAN
 Reg. Prof. Engr. No. 2786