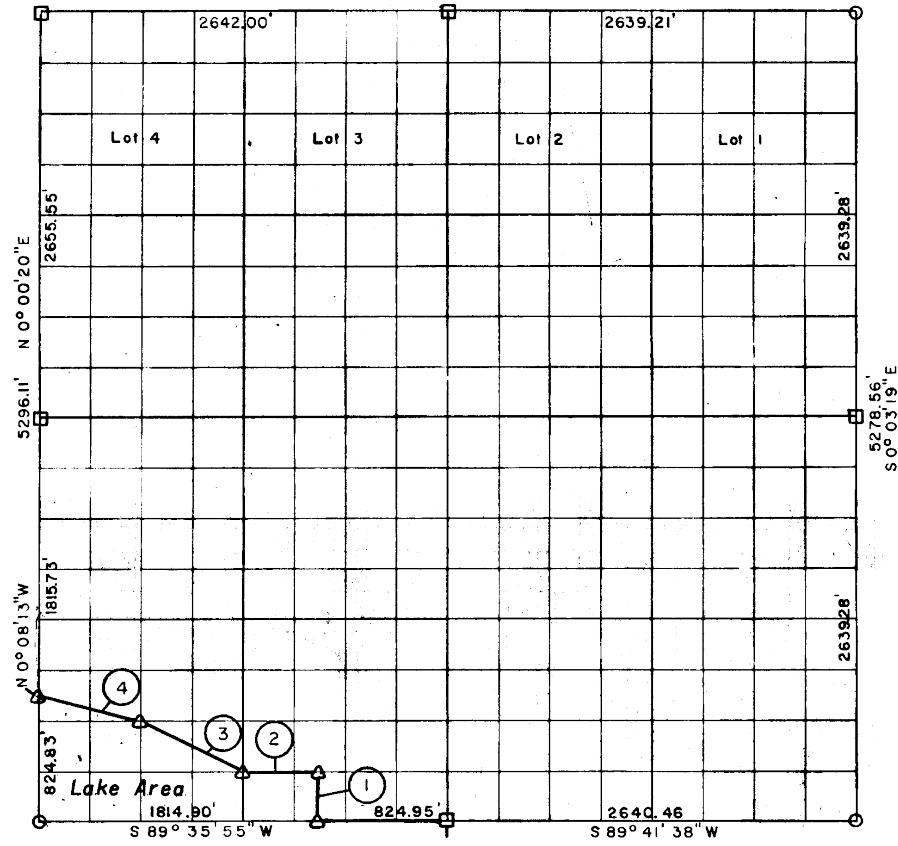


PAG
8-74

PARTIAL BOUNDARY SURVEYS
 EUFAULA LAKE
 CANADIAN RIVERS, OKLAHOMA
 Performed Under Contract Number DACW 56-73-C-0218
 SEC. 1 , T 6 N, R 16 E PITTSBURG COUNTY

N 89° 50' 11" E
 5281.21



Course No.	Distance	Bearing	Course No.	Distance	Bearing
1	329.83'	N 0° 04' 18" W			
2	495.07'	S 89° 36' 22" W			
3	736.54'	N 63° 46' 39" W			
4	679.77'	N 76° 21' 56" W			

Field Book No. E-1191 Date: November, 1973

LEGEND
 MONUMENT
 ORIGINAL CORNER
 IRON PIN

M^CCOY, MECKLENBURG AND PARR, INC.
 Under the Supervision of
 U.S. ARMY ENGINEER DISTRICT, TULSA
 CORPS OF ENGINEERS

522
 CERTIFICATE OF SURVEY
 I HEREBY CERTIFY THAT THE ABOVE PLAT IS A TRUE AND CORRECT REPRESENTATION OF THE SURVEY MADE IN SECTION 1, T 6 N, R 16 E, PITTSBURG COUNTY, OKLAHOMA.
 Robert L. McCoy
 ROBERT L. MCCOY

EUFULA LAKE
CANADIAN RIVERS, OKLAHOMA
SECTION AND QUARTER SECTION CORNER
REFERENCES FOR
SEC. 1, T 6 N, R 16 E, I.M. PITTSBURG COUNTY

