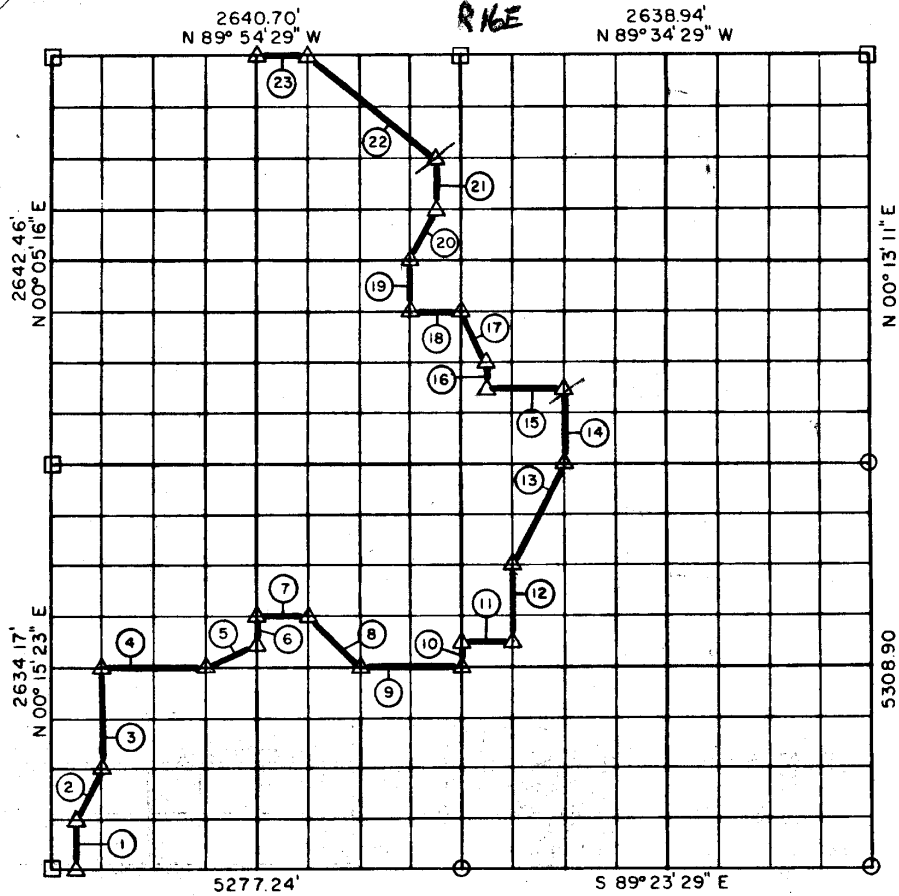


20, T 6 N, R 16 E TTSBURG COUNTY



Course No.	Distance	Bearing	Course No.	Distance	Bearing
1	329.36'	N 00° 15' 19" E	17	371.11'	N 26° 11' 06" W
2	367.58'	N 26° 54' 15" E	18	329.71'	N 89° 44' 48" W
3	658.92'	N 00° 15' 15" E	19	331.61'	N 00° 10' 49" E
4	659.30'	S 89° 31' 14" E	20	370.33'	N 26° 37' 34" E
5	368.04'	N 63° 50' 31" E	21	331.70'	N 00° 11' 13" E
6	165.01'	N 00° 14' 50" E	22	1057.96'	N 51° 04' 30" W
7	329.61'	S 89° 33' 10" E	23	330.09'	N 89° 54' 29" W
8	467.52'	S 44° 35' 16" E			
9	659.30'	S 89° 31' 14" E		10015.13	
10	165.38'	N 00° 14' 17" E			
11	329.76'	S 89° 29' 36" E			
12	496.34'	N 00° 14' 09" E			
13	738.38'	N 26° 45' 27" E			
14	497.60'	N 00° 12' 00" E			
15	494.62'	N 89° 34' 24" W			
16	165.90'	N 00° 11' 43" E			

Book No. E-1044

Date: May, 1965

561

I, Jack R. Kalman, a Registered Professional Engineer, do hereby certify that the above plot is a true and accurate survey of Sec. 20, T 6 N, R 16 E as made under my supervision.

*Jack R. Kalman*  
 JACK R. KALMAN  
 Reg. Prof. Engr. No. 2786