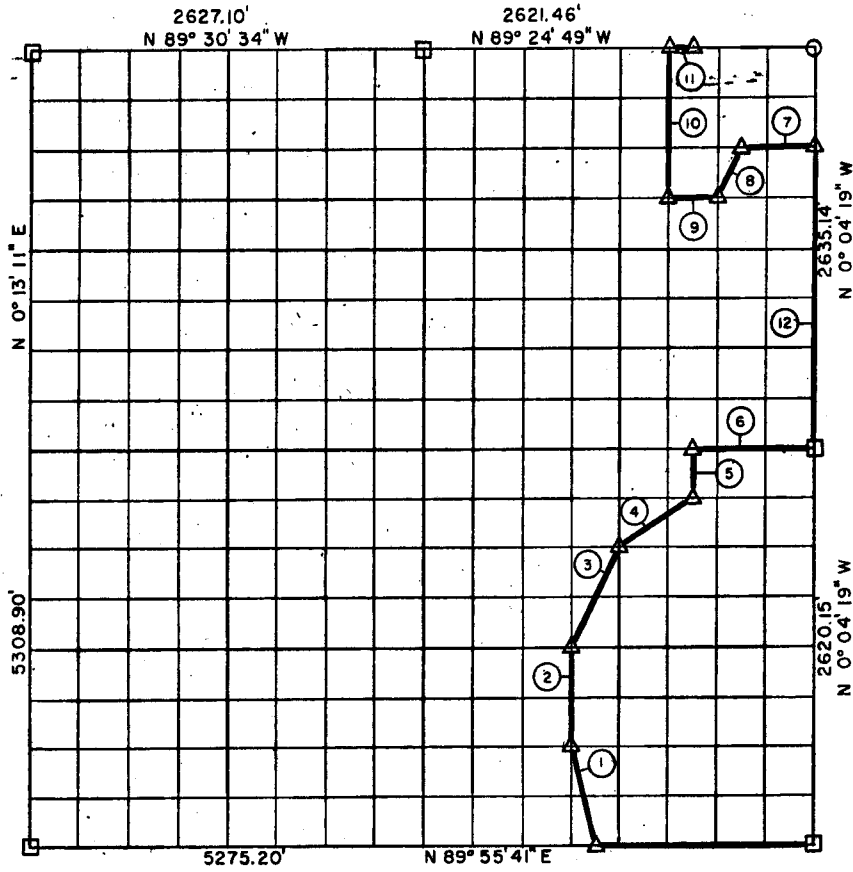


SEC. 21, T 6 N, R 16 E, PITTSBURG COUNTY



Course No.	Distance	Bearing	Course No.	Distance	Bearing
1	677.75'	N 14° 02' 20" W			
2	657.72'	N 0° 02' 19" E			
3	734.42'	N 26° 38' 49" E			
4	591.39'	N 56° 31' 21" E			
5	328.18'	N 0° 00' 59" W			
6	821.73'	S 89° 40' 23" E			
7	491.90'	N 89° 28' 42" W			
8	366.90'	S 26° 30' 57" W			
9	328.06'	N 89° 30' 39" W			
10	990.00'	N 0° 00' 19" W			
11	163.84'	S 89° 21' 49" E			
12	1976.36'	N 0° 04' 19" W			

Book No. E-969

Date: February, 1965

I, Jack R. Kalman, a Registered Professional Engineer, do hereby certify that the above plat is a true and accurate survey of Sec. 21, T 6 N, R 16 E as made under my supervision.

Jack R. Kalman
 JACK R. KALMAN
 Reg. Prof. Engr. No. 2786