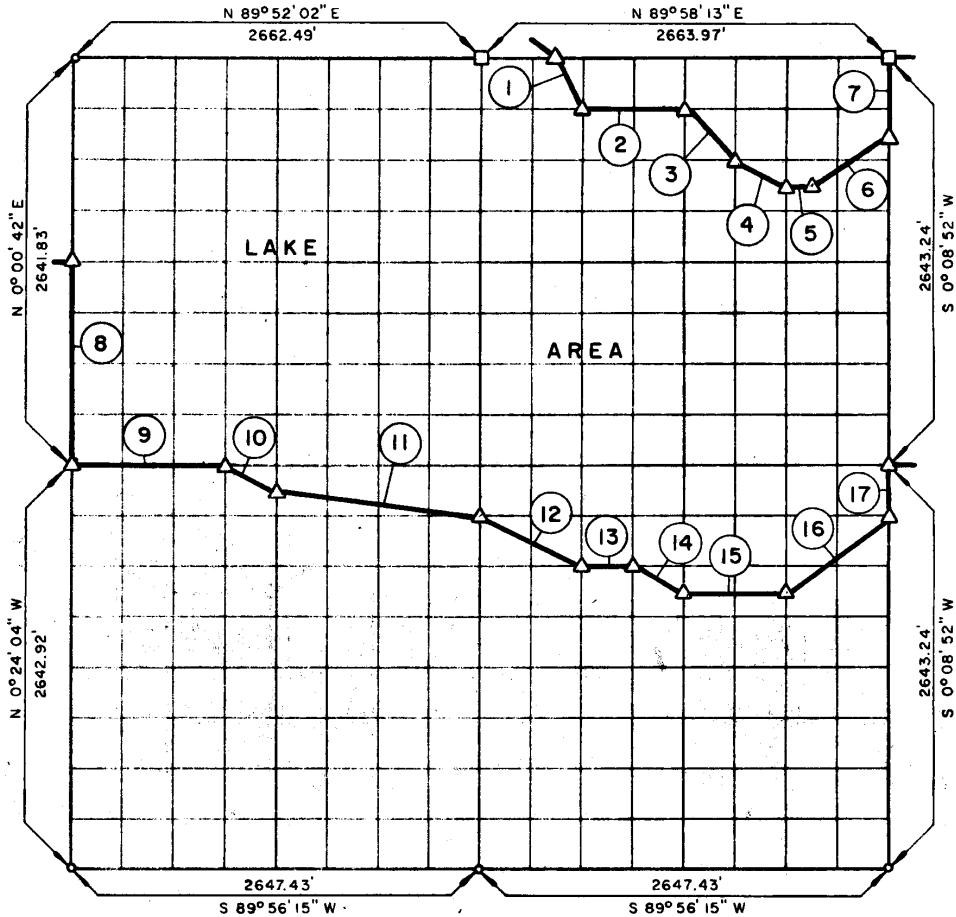


PARTIAL BOUNDARY SURVEYS
 EUFAULA LAKE AREA "M"
 CANADIAN RIVER, OKLAHOMA

SEC. 23 T-6-N R-16-E COUNTY PITTSBURG



Course No.	Distance	Bearing	Course No.	Distance	Bearing
1	370.01	S 26° 43' 45" E	14	370.24	S 63° 33' 59" E
2	665.73	N 89° 57' 55" E	15	663.28	N 89° 56' 02" E
3	468.61	S 45° 10' 58" E	16	829.45	N 53° 14' 44" E
4	371.12	S 63° 36' 10" E	17	330.41	N 0° 08' 52" E
5	166.34	N 89° 57' 24" E			
6	599.39	N 56° 30' 30" E			
7	495.61	N 0° 08' 52" E			
8	1320.91	S 0° 00' 43" W			
9	999.18	N 89° 56' 01" E			
10	372.16	S 63° 42' 59" E			
11	1341.82	S 82° 59' 39" E			
12	740.94	S 63° 35' 08" E			
13	331.71	N 89° 56' 02" E			

Field Book No. E-1181, Date 9-18-73

CERTIFICATE OF SURVEY

I HEREBY CERTIFY THAT THE ABOVE PLAN IS A TRUE AND CORRECT REPRESENTATION OF THE SURVEY MADE IN SECTION 23, T-6-N, R-16-E, PITTSBURG COUNTY, OKLAHOMA

[Signature]
 REGISTERED LAND SURVEYOR

K. N. COX & ASSOCIATES - ENGINEERS

Under the Supervision of

U.S. ARMY ENGINEER DISTRICT, TULSA
 CORPS OF ENGINEERS

SHEET 1 of 2

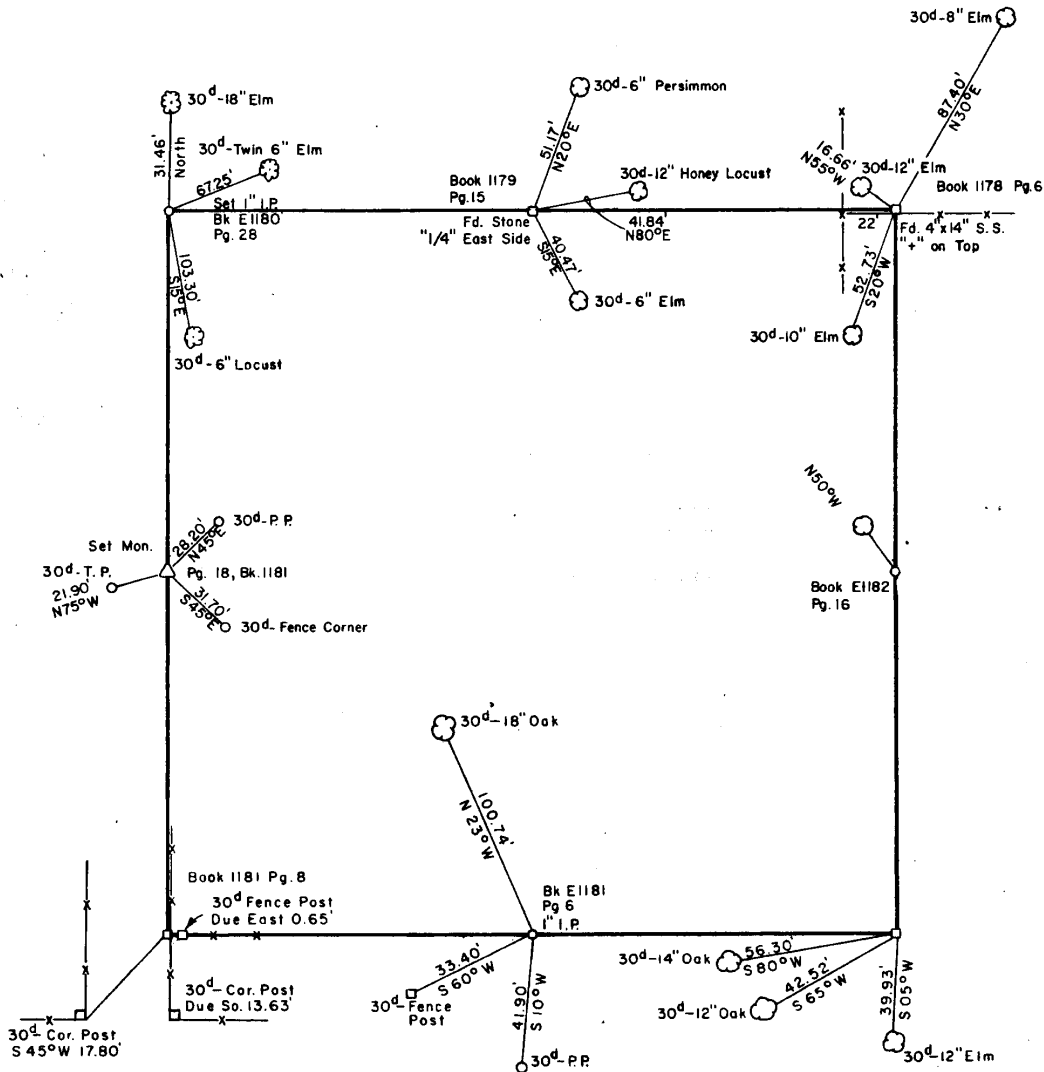
LEGEND

- △ MONUMENT
- ORIGINAL CORNER
- IRON PIN

REVISID: 9-18

PARTIAL BOUNDARY SURVEYS
 EUFAULA LAKE AREA "M"
 CANADIAN RIVER, OKLAHOMA

SEC. 23 T-6-N R-16-E COUNTY PITTSBURG



Field Book No. 1181

Date 9-1-72

K. N. COX & ASSOCIATES - ENGINEERS

Under the Supervision of

U.S. ARMY ENGINEER DISTRICT, TULSA
 CORPS OF ENGINEERS

SHEET 2 of 2

LEGEND

- △ MONUMENT
- ORIGINAL CORNER
- IRON PIN

John C. Cox