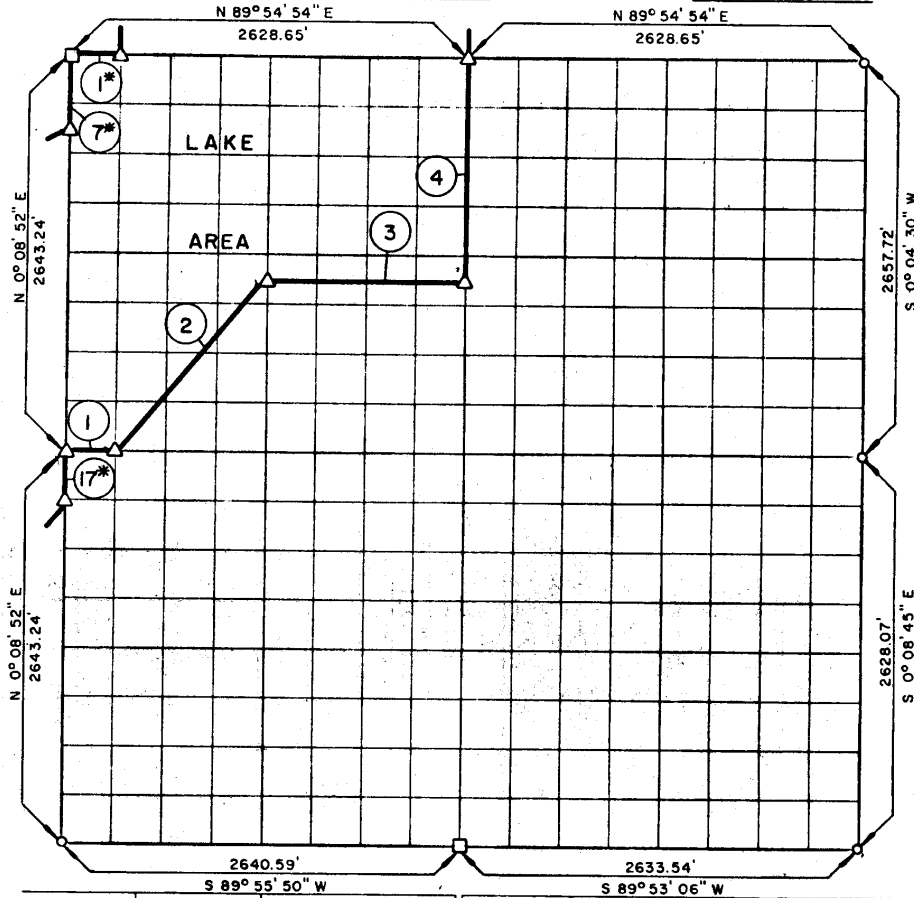


PARTIAL BOUNDARY SURVEYS  
 EUFAULA LAKE AREA "M"  
 CANADIAN RIVER, OKLAHOMA

Performed Under Contract Number DACW 56-68-C-0103

SEC. 24 T-6-N R-16-E COUNTY PITTSBURG



Course No.	Distance	Bearing	Course No.	Distance	Bearing
1	329.33	S 89° 55' 38" E			
2	1522.33	N 40° 32' 55" E			
3	1316.00	S 89° 59' 46" E			
4	1490.90	N 0° 01' 05" E			

**CERTIFICATE OF SURVEY**

I HEREBY CERTIFY THAT THE ABOVE PLAT IS A TRUE AND CORRECT REPRESENTATION OF THE SURVEY MADE IN SECTION 24 T-6-N, R-16-E, PITTSBURG COUNTY, OKLAHOMA.

*John C. Cox*  
 REGISTERED LAND SURVEYOR

Field Book No. E-1182, Date 9-18-73

K.N. COX & ASSOCIATES - ENGINEERS

Under the Supervision of

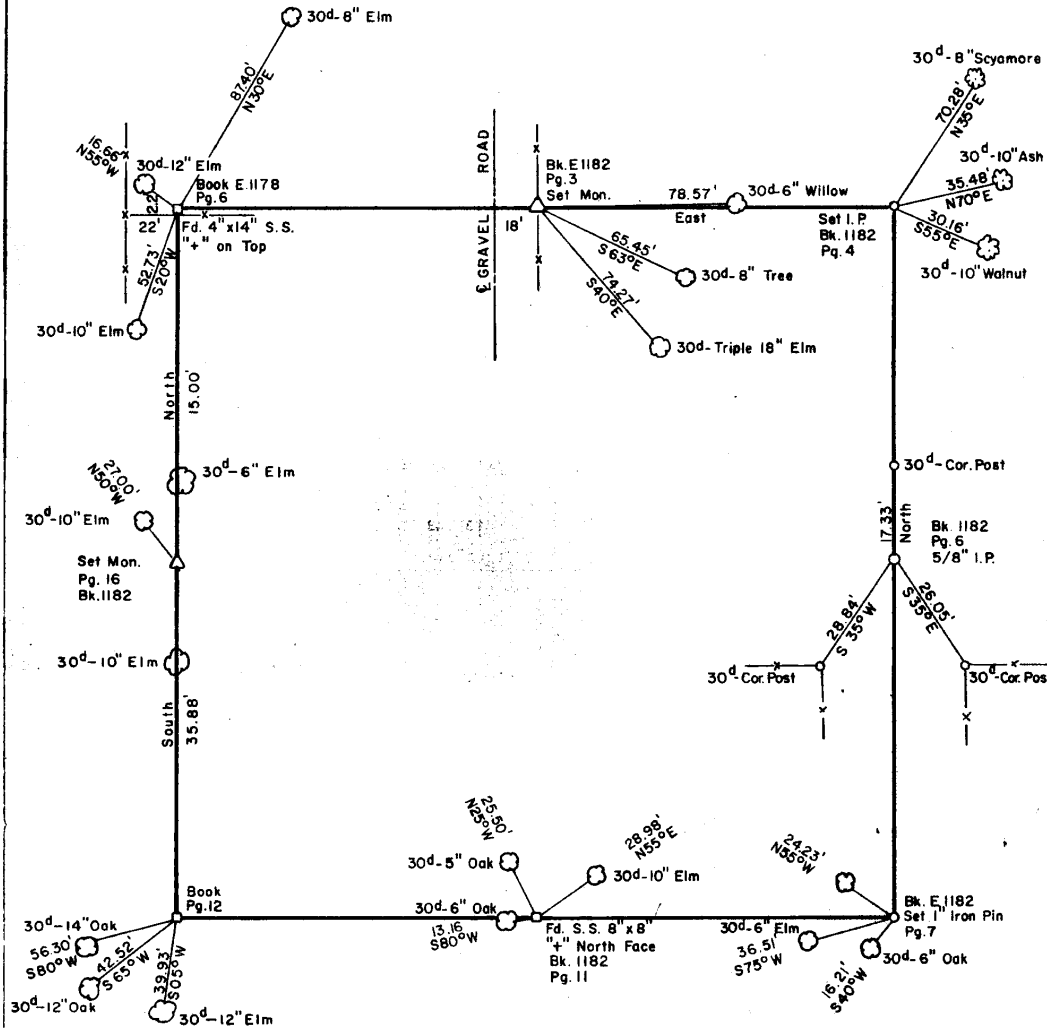
U.S. ARMY ENGINEER DISTRICT, TULSA  
 CORPS OF ENGINEERS

SHEET 1 of 2

LEGEND  
 Δ MONUMENT  
 □ ORIGINAL CORNER  
 ○ IRON PIN

PARTIAL BOUNDARY SURVEYS  
 EUFAULA LAKE AREA "M"  
 CANADIAN RIVER, OKLAHOMA

SEC. 24 T-6-N R-16-E COUNTY PITTSBURG



Field Book No. E1182

Date 9-1-72

*John C. Cox*

K. N. COX & ASSOCIATES - ENGINEERS

Under the Supervision of

U.S. ARMY ENGINEER DISTRICT, TULSA  
 CORPS OF ENGINEERS

SHEET 2 of 2

LEGEND

- Δ MONUMENT
- ORIGINAL CORNER
- IRON PIN