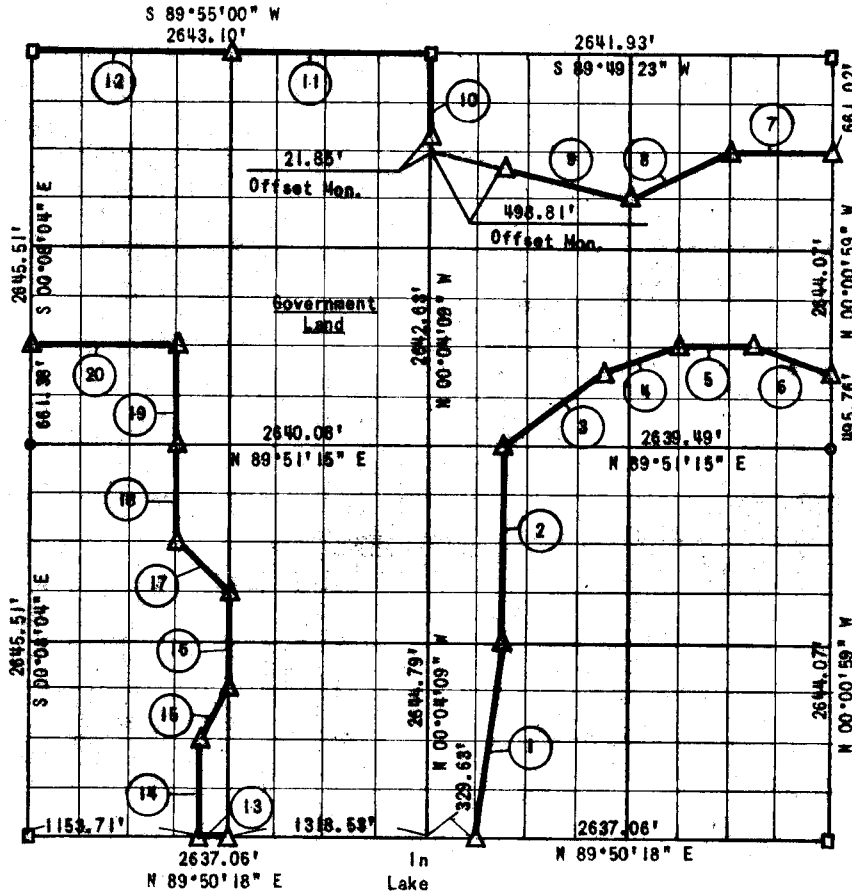


PARTIAL BOUNDARY SURVEY
EUFAULA LAKE
SECTION 27, T 6 N, R 16 E

Performed Under Contract No. DACW 56-77-C-0097

PITTSBURG COUNTY



Course No.	Distance	Bearing	Course No.	Distance	Bearing
1	1332.41'	N 07°02'38" E	13	164.82'	S 89°50'18" W
2	1822.89'	N 00°03'33" W	14	661.30'	N 00°06'21" W
3	825.96'	N 52°58'52" E	15	369.61'	N 26°23'19" E
4	522.18'	N 71°24'08" E	16	661.29'	N 00°06'07" W
5	495.02'	N 89°50'47" E	17	466.89'	N 45°03'45" W
6	521.50'	S 71°40'45" E	18	661.31'	N 00°06'36" W
7	660.33'	S 89°49'51" W	19	660.88'	N 00°06'36" W
8	739.04'	S 63°16'24" W	20	889.87'	S 89°52'11" W
9	1360.86'	N 76°06'55" W			
10	660.66'	N 00°04'09" W			
11	1321.55'	S 89°55'00" W			
12	1321.55'	S 89°55'00" W			

CERTIFICATE OF SURVEY

Field Book No. E-1313

Date: Aug. 2, 1977

I hereby certify that the above plat is a true and correct representation of the survey made in Section 27, T 6 N, R 16 E, Pittsburg County, Oklahoma.

SULLIVAN & GILBERT, INC.
Consulting Engineers

Under the supervision of
U.S. ARMY ENGINEER DISTRICT, TULSA
CORPS OF ENGINEERS

LEGEND

- ▲ C OF E MON.
- IRON PIN
- ORIG. STONE

Sullivan & Gilbert
REGISTERED LAND SURVEYOR L.S. #122

572

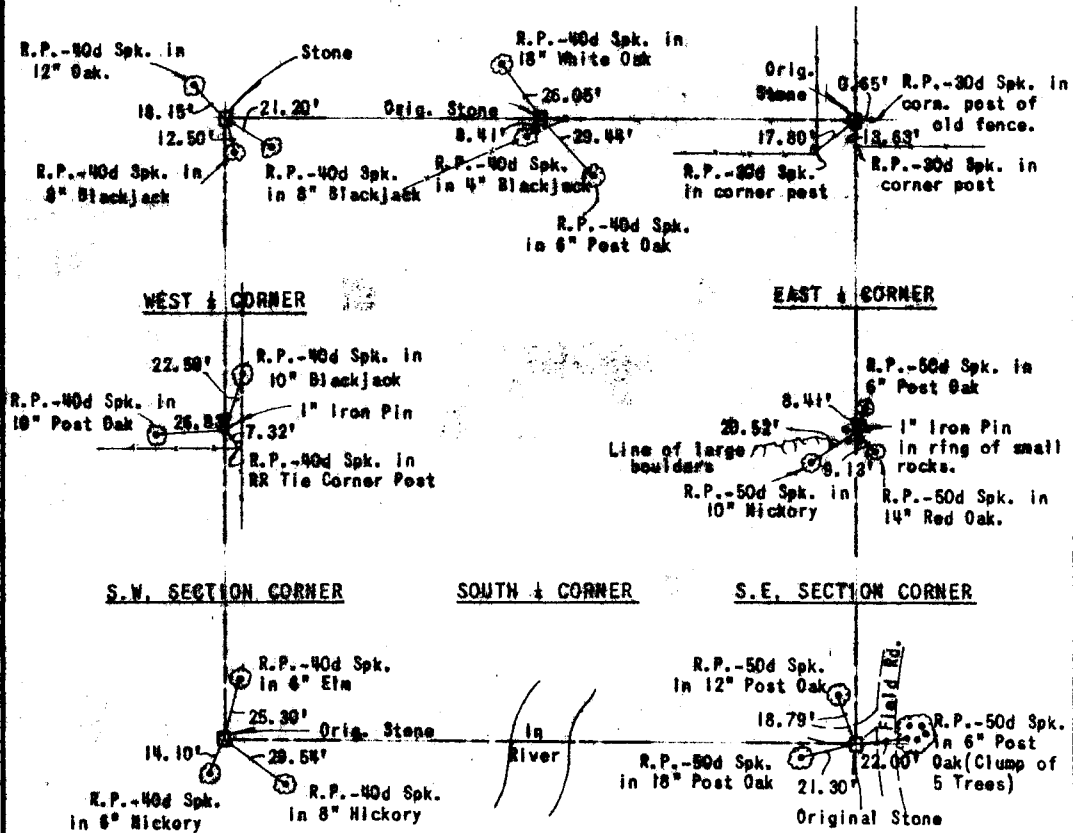
EDFAULA LAKE

SECTION AND QUARTER SECTION
CORNER REFERENCES FOR
SECTION 27, T 6 N, R 16 E, PITTSBURG COUNTY

N.W. SECTION CORNER

NORTH ½ CORNER

N.E. SECTION CORNER



Scale: 1"=50'
Date: August 2, 1977
Field Book No. E-1313
Sullivan & Gilbert, Inc.