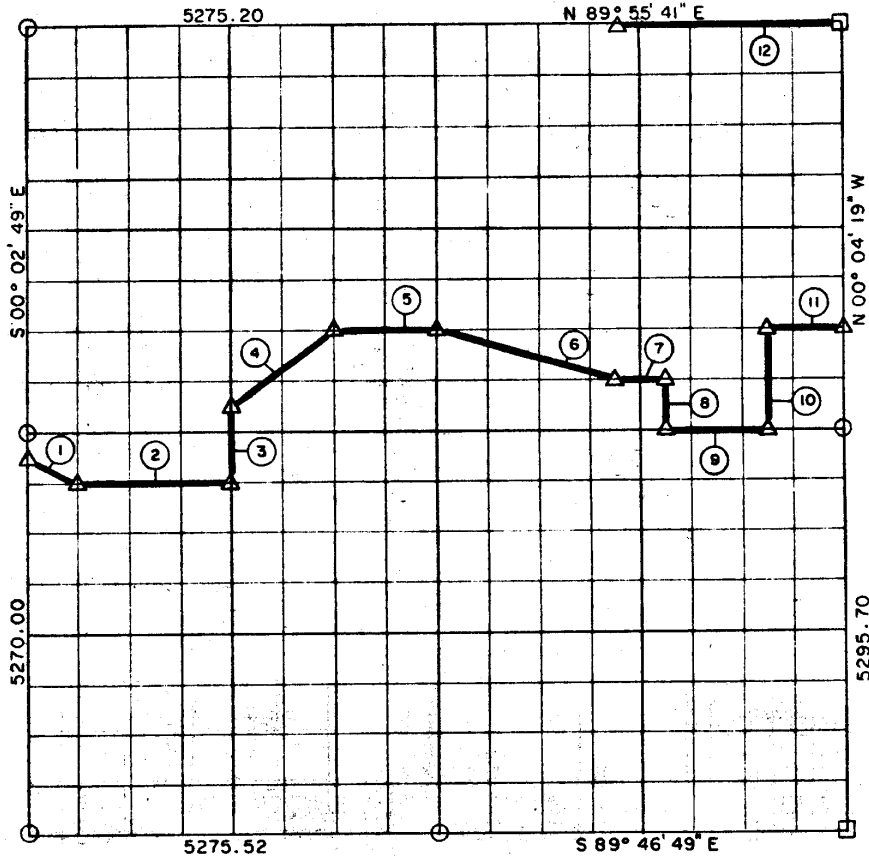


28, T 6 N, R 16 E TSBURG COUNTY

R16E



Course No.	Distance	Bearing	Course No.	Distance	Bearing
1	368.91	S 63° 23' 32" E			
2	989.13	S 89° 54' 28" E			
3	494.66	N 00° 03' 12" W			
4	823.71	N 53° 07' 46" E			
5	659.42	S 89° 57' 45" E			
6	1200.92	S 73° 59' 50" E			
7	329.71	S 89° 56' 40" E			
8	330.63	S 00° 03' 59" E			
9	659.42	S 89° 55' 34" E			
10	661.66	N 00° 04' 11" W			
11	494.56	S 89° 57' 45" E			
12	1483.65	S 89° 55' 41" W			
	8396.36				

Book No. E-968

Date: February, 1965

571

I, Jack R. Kalman, a Registered Professional Engineer, do hereby certify that the above plat is a true and accurate survey of Sec. 28 T 6N, R 16E as made under my supervision.

Jack R. Kalman
 JACK R. KALMAN
 Reg. Prof. Engr. No. 2786