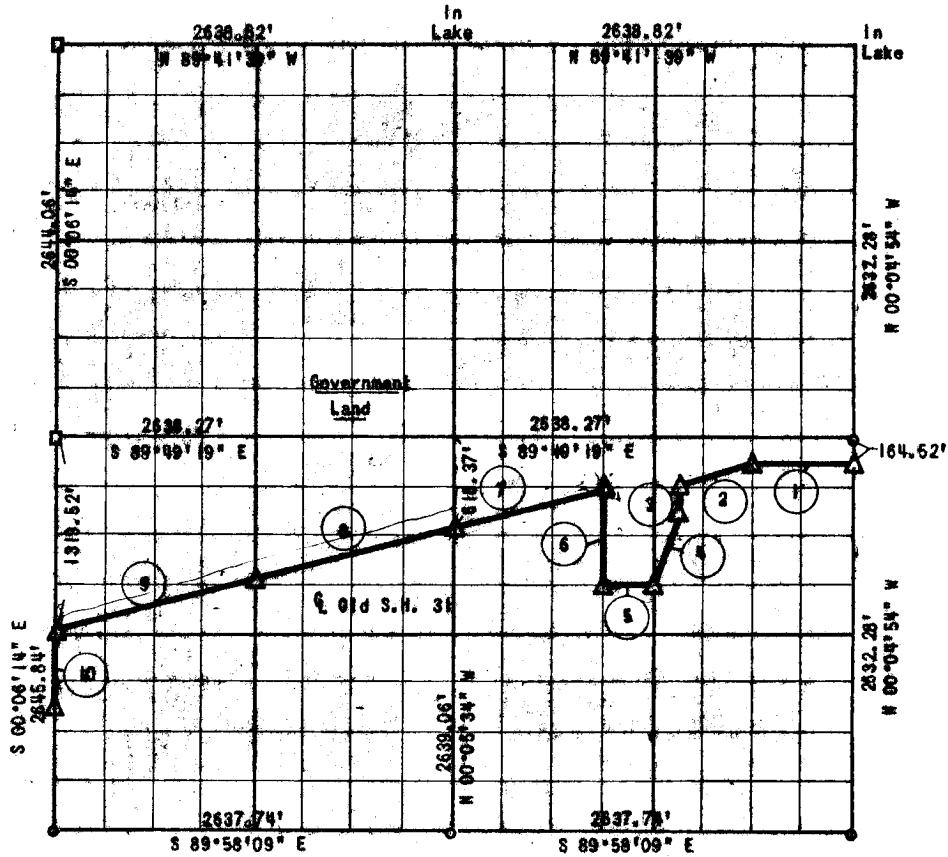


PARTIAL SURVEY
EUFALAKE LAKE

SEC. 29, T 6 N, R 16 E

Performed Under Contract No. DACW 56-77-C-0097

PITTSBURG COUNTY



Course No.	Distance	Bearing	Course No.	Distance	Bearing
1	659.56'	N 89°40'53\" W			
2	520.67'	S 71°43'41\" W			
3	164.70'	S 00°05'11\" E			
4	620.32'	S 18°23'16\" W			
5	330.40'	N 89°52'06\" W			
6	632.18'	N 00°05'19\" W			
7	1022.47'	S 75°16'39\" W			
8	1363.24'	S 75°16'33\" W			
9	1363.12'	S 75°16'33\" W			
10	491.02'	S 00°06'14\" E			

CERTIFICATE OF SURVEY

Field Book No. E-1312

Date: Aug. 2, 1977

I hereby certify that the above plat is a true and correct representation of the survey made in Section 29, T 6 N, R 16 E, Pittsburg County, Oklahoma.

SULLIVAN & GILBERT, INC.
Consulting Engineers

Under the supervision of
U.S. ARMY ENGINEER DISTRICT, TULSA
CORPS OF ENGINEERS

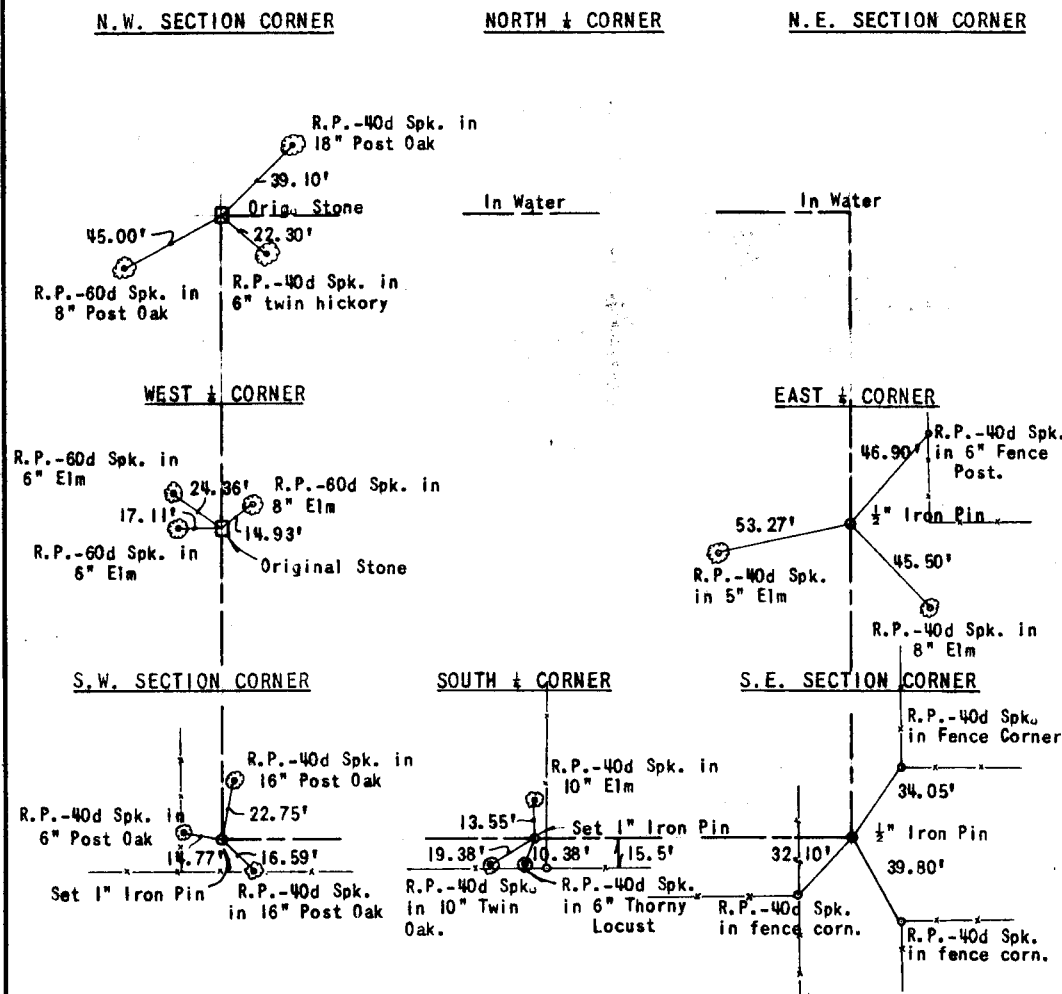
LEGEND

- △ C OF E MON.
- IRON PIN
- ORIG. STONE

Sullivan & Gilbert
REGISTERED LAND SURVEYOR L.S. #122

570

EUFULA LAKE
SECTION AND QUARTER SECTION
CORNER REFERENCES FOR
SECTION 29, T 6 N, R 16 E, PITTSBURG COUNTY



Scale: 1"=50'
Date: August 2, 1977
Field Book No. E-1312
Sullivan & Gilbert, Inc.