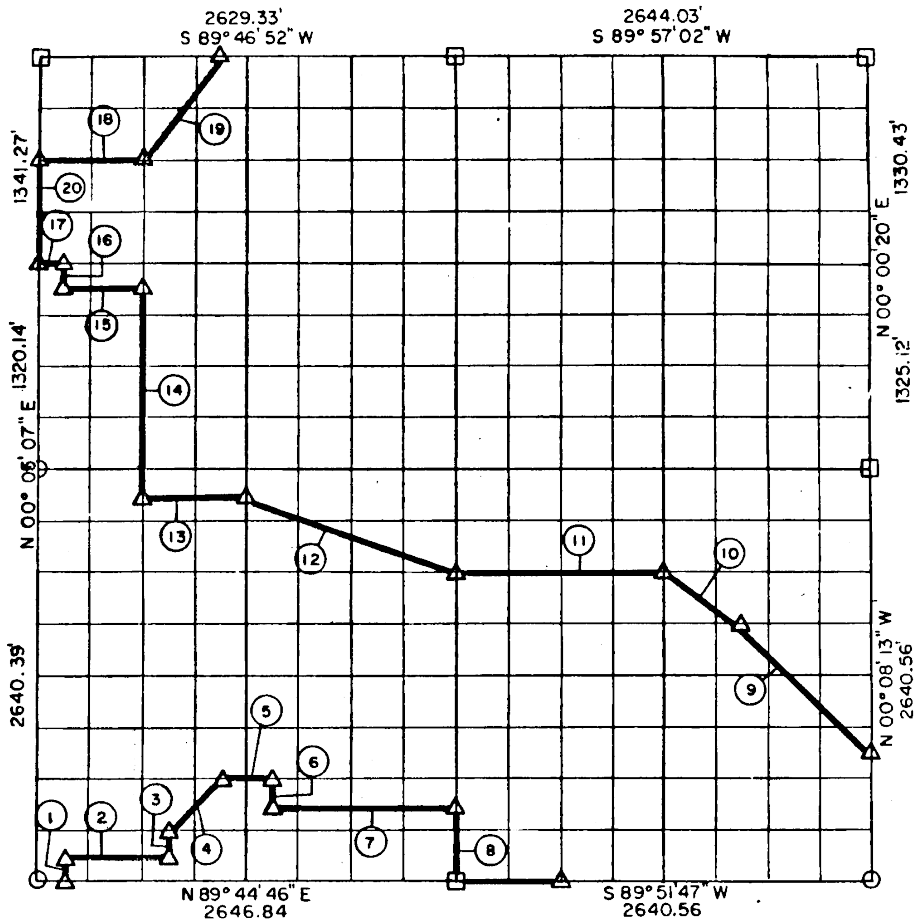


SEC. 2 , T 6 N, R 16 E, PITTSBURGH COUNTY



Course No.	Distance	Bearing	Course No.	Distance	Bearing
1	165.01	N 00° 04' 23" E	12	1408.18	N 69° 38' 21" W
2	661.57	N 89° 44' 59" E	13	659.66	S 89° 47' 56" W
3	164.97	N 00° 01' 33" E	14	1321.07	N 00° 07' 17" E
4	468.15	N 44° 56' 52" E	15	493.92	S 89° 44' 37" W
5	330.58	N 89° 45' 37" E	16	165.05	N 00° 04' 23" E
6	164.93	S 00° 00' 53" E	17	164.61	S 89° 44' 23" W
7	1157.28	N 89° 45' 24" E	18	657.88	N 89° 45' 37" E
8	494.58	S 00° 06' 11" E	19	833.78	N 36° 17' 11" E
9	1166.38	N 45° 08' 43" W	20	670.64	N 00° 05' 07" E
10	594.53	N 56° 28' 17" W			
11	1319.70	S 89° 49' 04" W			

Book No. E-972

Date: February, 1965

521

I, Jack R. Kalman, a Registered Professional Engineer, do hereby certify that the above plat is a true and accurate survey of Sec. 2 T 6 N, R 16 E as made under my supervision.

Jack R. Kalman
 JACK R. KALMAN
 Reg. Prof. Engr. No. 2786