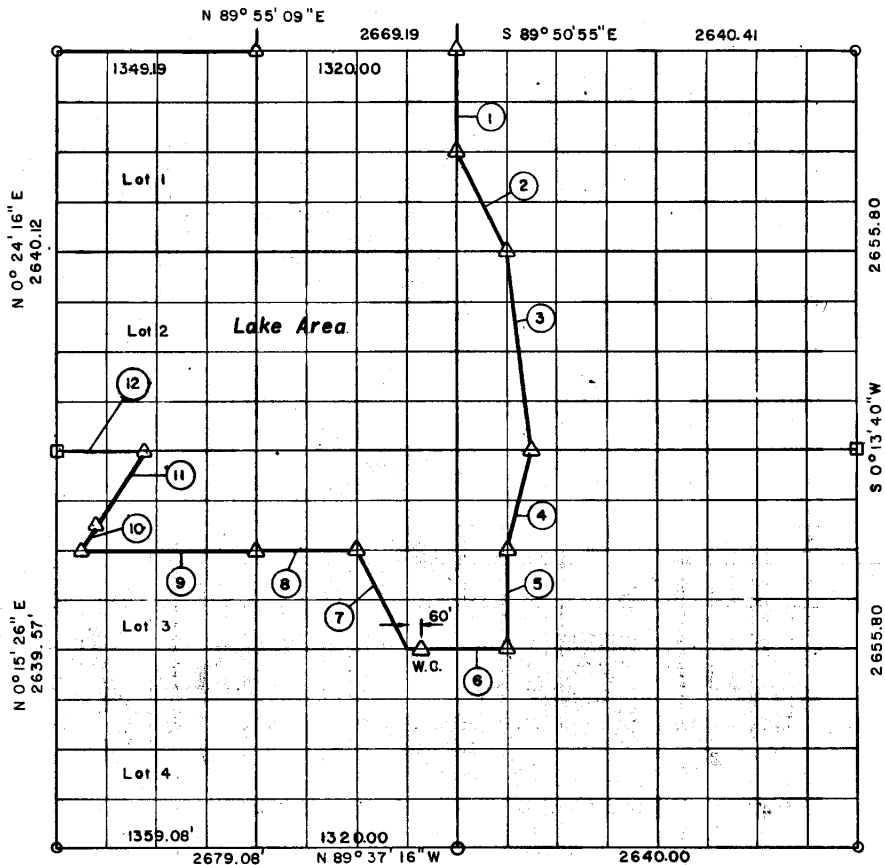


FILED
 PITTSBURG
 BOOK 357 PAG.
 DATE 1-8-74

PARTIAL BOUNDARY SURVEYS
 EUFAULA LAKE
 CANADIAN RIVERS, OKLAHOMA
 Performed Under Contract Number DACW 56-73-C-0218
 SEC. 31, T 6 N, R 16 E PITTSBURG COUNTY



Course No.	Distance	Bearing	Course No.	Distance	Bearing
1	663.34	S 0° 13' 24" W	7	739.55'	N 26° 16' 49" W
2	740.68	S 26° 14' 16" E	8	660.04	N 89° 45' 08" W
3	1337.00	S 6° 51' 56" E	9	1213.32	N 89° 45' 06" W
4	682.49	S 14° 12' 55" W	10	176.64	N 39° 10' 05" E
5	662.19	S 0° 13' 26" W	11	609.56	D=0° 30' L=609.56
6	660.02	N 89° 42' 31" W	12	568.42	N 89° 47' 46" W

Field Book No. E-1189 Date: November, 1973

MCCOY, MECKLENBURG AND PARR, INC.

- LEGEND
 Δ MONUMENT
 □ ORIGINAL CORNER
 ○ IRON PIN

Under the Supervision of
 U.S. ARMY ENGINEER DISTRICT, TULSA
 CORPS OF ENGINEERS

578
 CERTIFICATE OF SURVEY

I HEREBY CERTIFY THAT THE ABOVE PLAT IS A TRUE AND CORRECT REPRESENTATION OF THE SURVEY MADE IN SECTION 31, T 6 N, R 16 E, PITTSBURG COUNTY, OKLAHOMA

Robert L. McCoy
 ROBERT L. MCCOY

FILED
 PITTSBURG CC TY
 BOOK 357 PAGE 1
 DATE 1-8-74

EUFALA LAKE
 CANADIAN RIVERS, OKLAHOMA
 SECTION AND QUARTER SECTION CORNER
 REFERENCES FOR
 SEC. 31, T 6 N, R 16 E, I.M. PITTSBURG COUNTY

