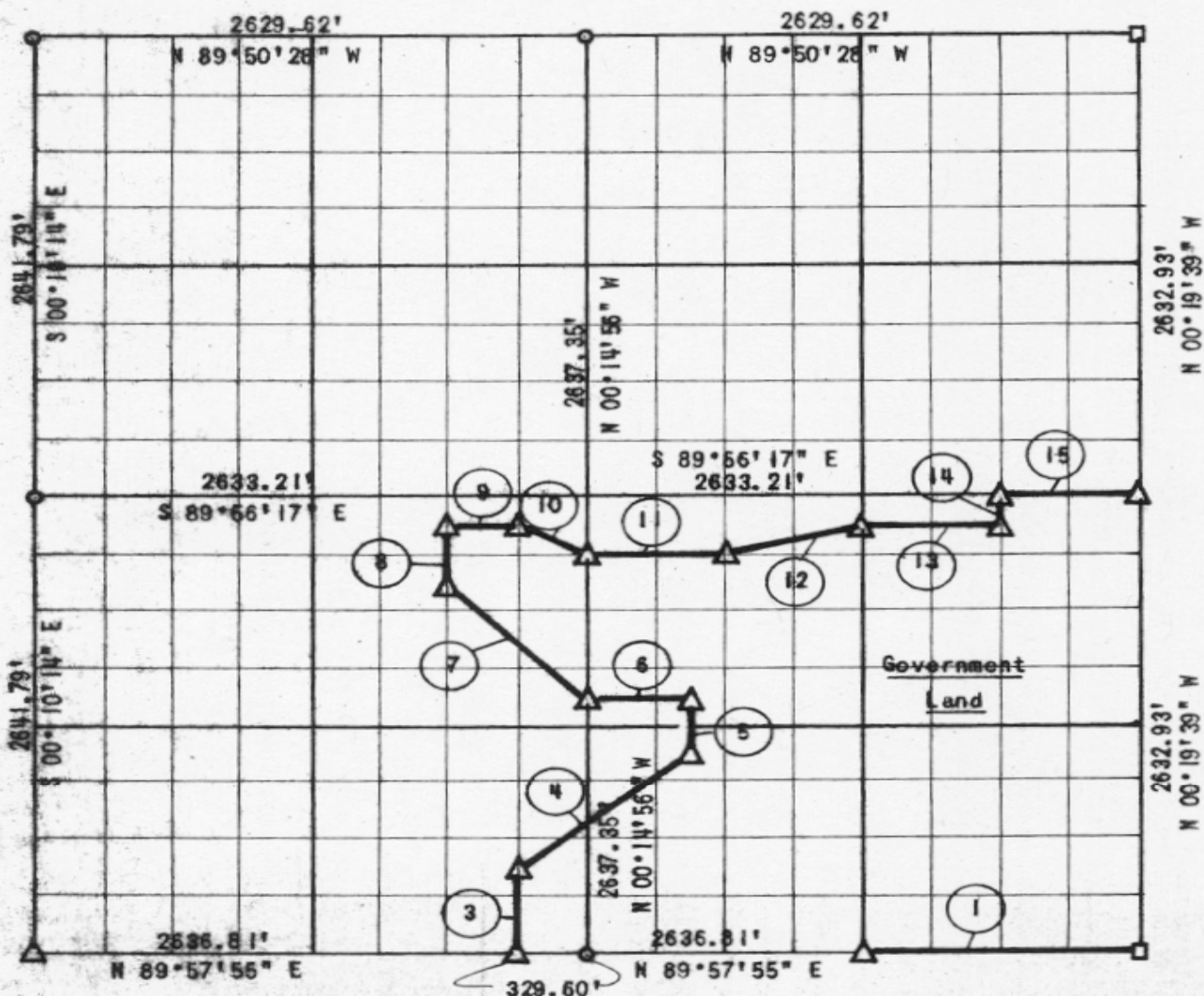


PARTIAL QUARTER SURVEY
 EUFAULA LAKE
 SECTION 33, T 6 N, R 16 E

Performed Under Contract No. DACW 56-77-C-0097

PITTSBURG COUNTY



Course No.	Distance	Bearing	Course No.	Distance	Bearing
1	1818.37'	S 89°57'55" W	13	658.36'	S 89°56'39" E
2			14	164.63'	N 00°18'28" W
3	494.61'	N 00°14'20" W	15	658.30'	S 89°56'17" E
4	1052.81'	N 51°13'23" E			
5	329.57'	N 00°15'49" W			
6	494.02'	N 89°58'49" W			
7	934.21'	N 45°03'54" W			
8	328.58'	N 00°13'45" W			
9	327.88'	S 89°56'39" E			
10	368.93'	S 63°24'23" E			
11	668.42'	S 89°57'01" E			
12	677.76'	N 75°59'11" E			

CERTIFICATE OF SURVEY

Field Book No. E-1308

Date: Aug. 2, 1977

I hereby certify that the above plat is a true and correct representation of the survey made in Section 33, T 6 N, R 16 E, Pittsburg County, Oklahoma.

SULLIVAN & GILBERT, INC.
 Consulting Engineers

LEGEND

Under the supervision of
 U.S. ARMY ENGINEER DISTRICT, TULSA
 CORPS OF ENGINEERS

- △ C OF E MON.
- ⊙ IRON PIN
- ORIG. STONE

[Signature]
 REGISTERED LAND SURVEYOR L.S. #122

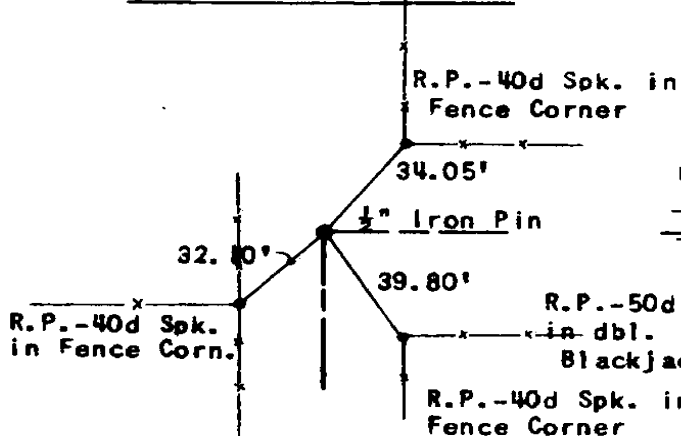
EUFULA LAKE

SECTION AND QUARTER SECTION

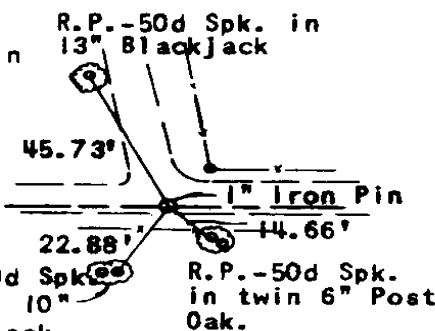
CORNER REFERENCES FOR

SECTION 33, T 6 N, R 16 E, PITTSBURG COUNTY

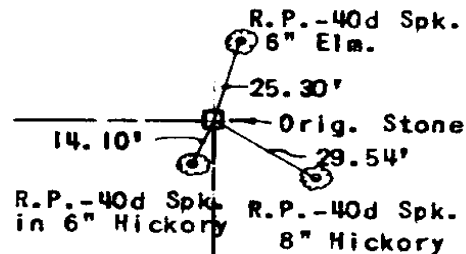
N.W. SECTION CORNER



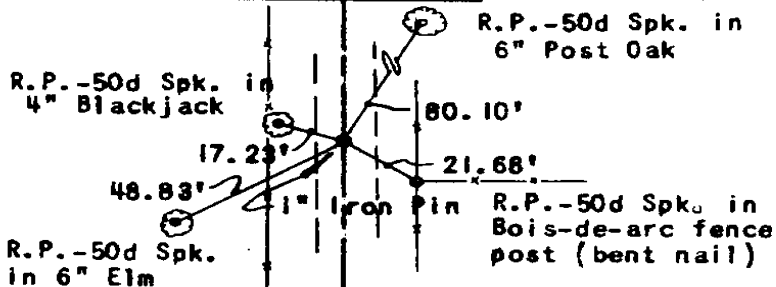
NORTH 1/2 CORNER



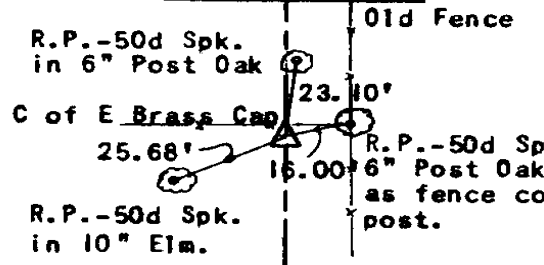
N.E. SECTION CORNER



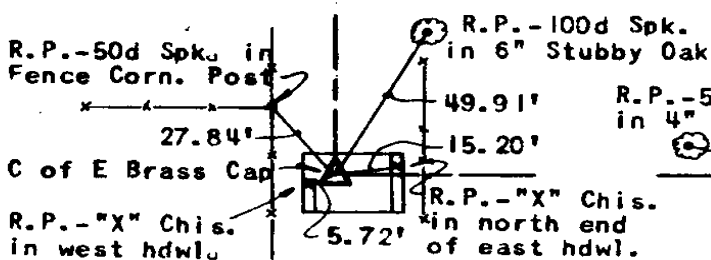
WEST 1/2 CORNER



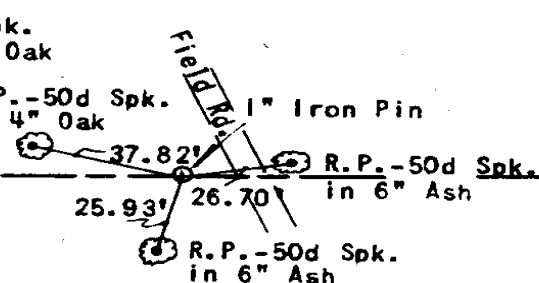
EAST 1/2 CORNER



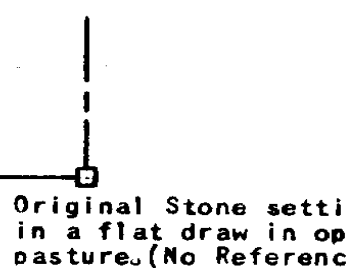
S.W. SECTION CORNER



SOUTH 1/2 CORNER



S.E. SECTION CORNER



Scale: 1"=50'
 Date: August 2, 1977
 Field Book No. E-1308
 Sullivan & Gilbert, Inc.