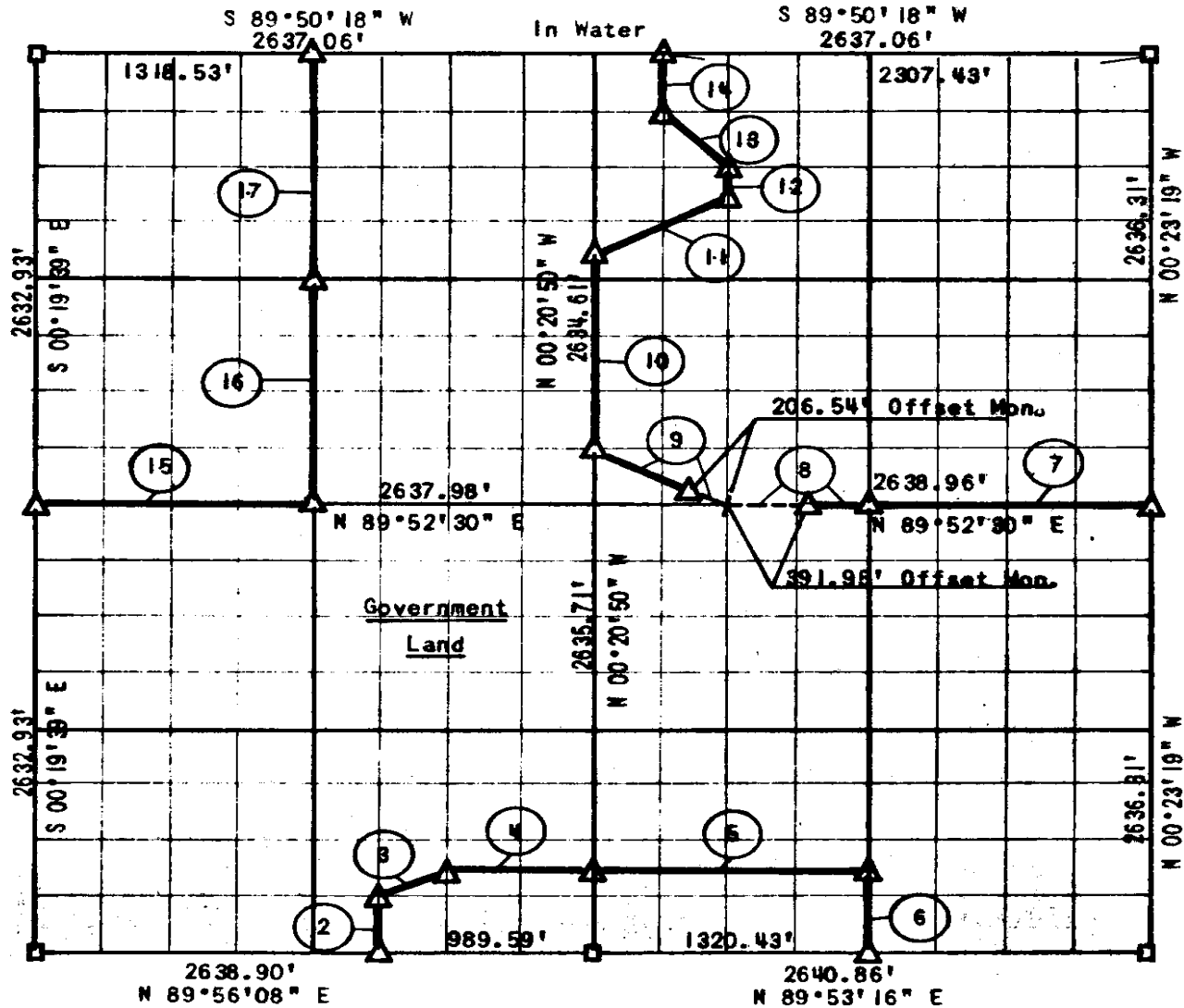


PARTIAL BOUNDARY SURVEY
 EUFAULA LAKE
 SECTION 34, T 6 N, R 16 E

Performed Under Contract No. DACW 56-77-C-0097

PITTSBURG COUNTY



Course No.	Distance	Bearing	Course No.	Distance	Bearing
1			13	466.83'	N 45°16'54" W
2	329.33'	N 00°20'24" W	14	329.35'	N 00°21'09" W
3	367.98'	N 63°20'30" E	15	1318.99'	N 89°52'30" E
4	659.68'	N 89°55'27" E	16	1316.89'	N 00°20'15" W
5	1320.12'	N 89°53'07" E	17	1316.89'	N 00°20'15" W
6	494.25'	S 00°22'04" E			
7	1319.48'	S 89°52'30" W			
8	659.74'	S 89°52'30" W			
9	738.51'	N 63°38'32" W			
10	1152.64'	N 00°20'50" W			
11	736.06'	N 63°16'19" E			
12	164.69'	N 00°21'27" W			

CERTIFICATE OF SURVEY

Field Book No. E-1309

Date: Aug. 2, 1977

I hereby certify that the above plat is a true and correct representation of the survey made in Section 34, T 6 N, R 16 E, Pittsburg County, Oklahoma.

SULLIVAN & GILBERT, INC.

Consulting Engineers

Under the supervision of
 U.S. ARMY ENGINEER DISTRICT, TULSA
 CORPS OF ENGINEERS

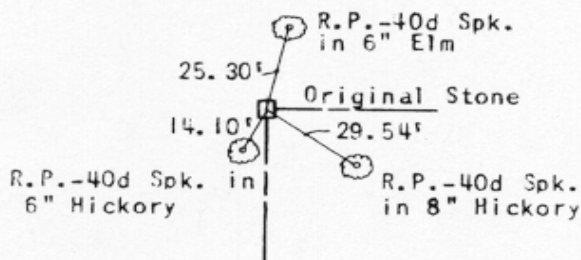
LEGEND

- △ C OF E MON.
- IRON PIN
- ORIG. STONE

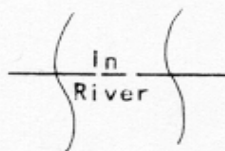
Sullivan & Gilbert
 REGISTERED LAND SURVEYOR L.S. #122

EUFAULA LAKE
SECTION AND QUARTER SECTION
CORNER REFERENCES FOR
SECTION 34, T 6 N, R 16 E, PITTSBURG COUNTY

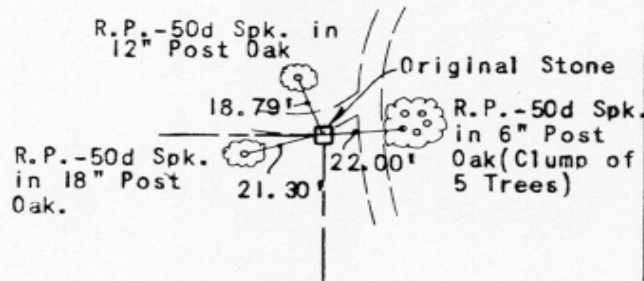
N.W. SECTION CORNER



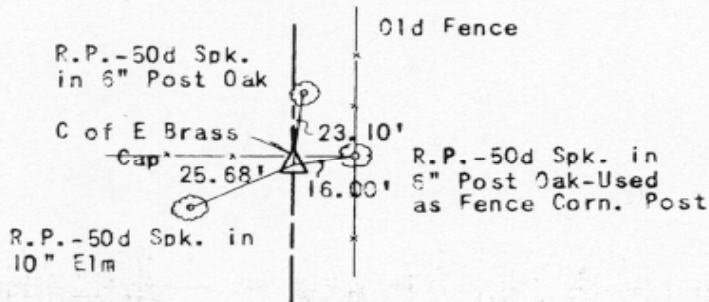
NORTH 1/4 CORNER



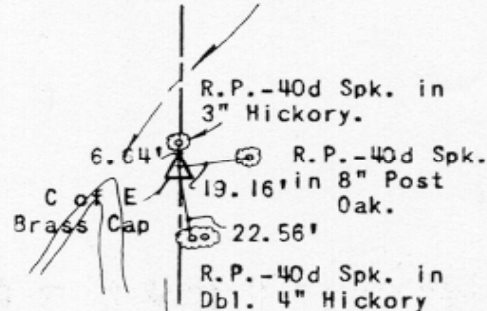
N.E. SECTION CORNER



WEST 1/4 CORNER



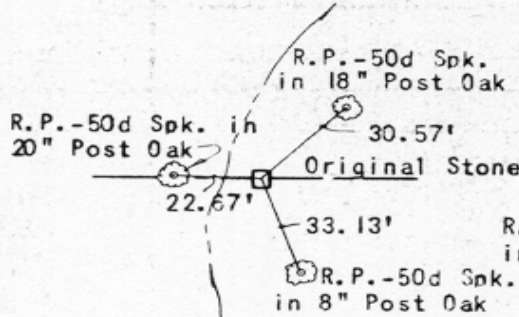
EAST 1/4 CORNER



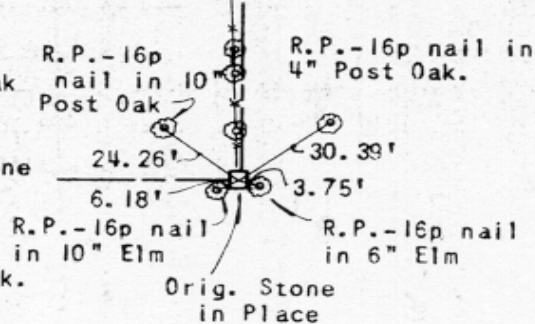
S.W. SECTION CORNER

Original Stone setting in a flat draw in open pasture. (No References)

SOUTH 1/4 CORNER



S.E. SECTION CORNER



Scale: 1"=50'
Date: Aug. 2, 1977
Field Book No. E-1309
Sullivan & Gilbert, Inc.