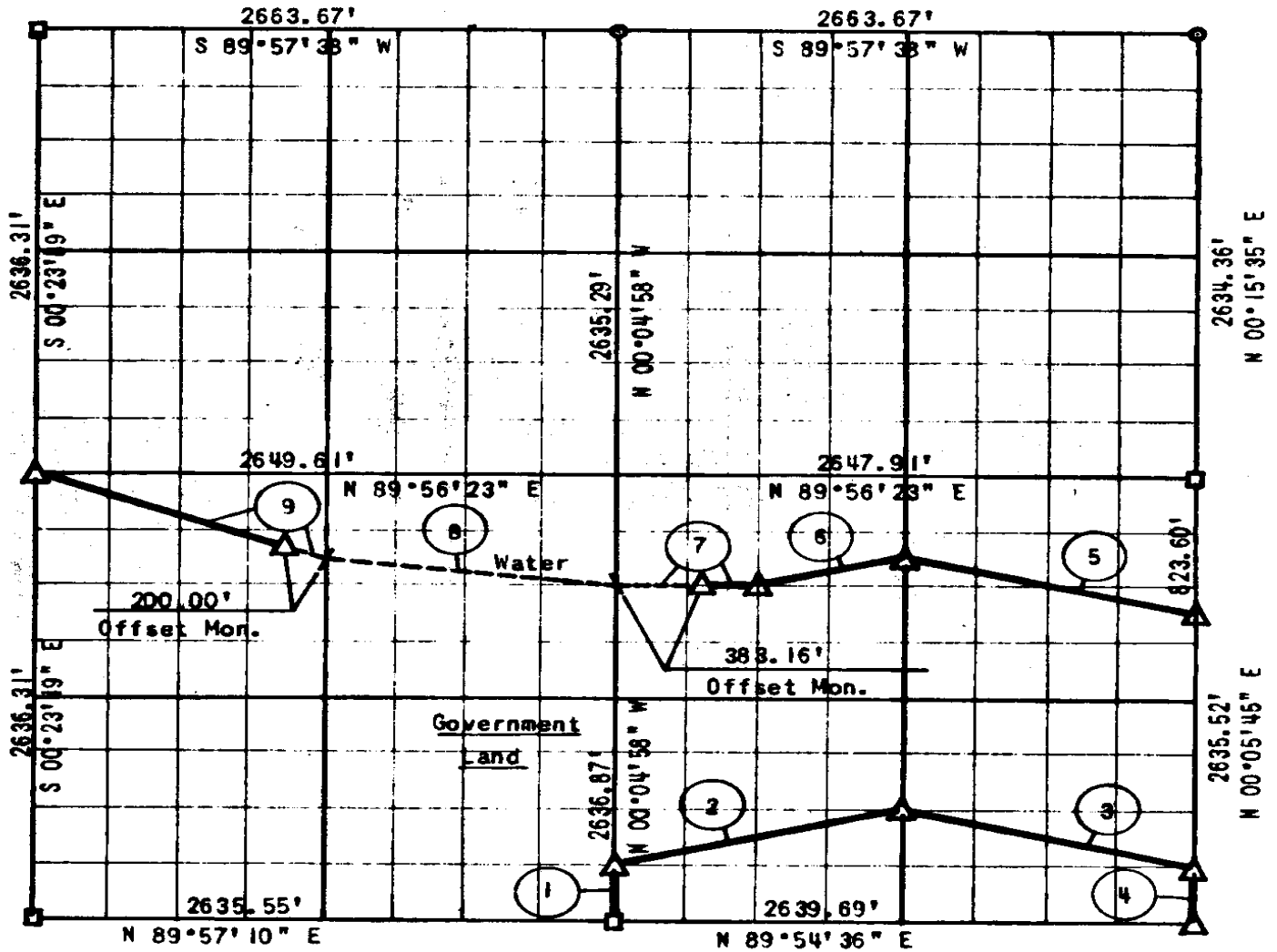


PARTIAL SURVEY  
EUFULA LAKE  
SECTION 35, T 6 N, R 16 E

Performed Under Contract No. DACW 56-77-C-0097

PITTSBURG COUNTY



Course No.	Distance	Bearing	Course No.	Distance	Bearing
1	329.61'	N 00°04'58" W			
2	1361.38'	N 75°54'22" E			
3	1360.12'	S 76°04'04" E			
4	329.44'	S 00°05'45" W			
5	1362.68'	N 76°04'32" W			
6	681.88'	S 75°56'59" W			
7	661.46'	S 89°55'56" W			
8	1333.78'	N 82°57'37" W			
9	1415.45'	N 69°37'07" W			

CERTIFICATE OF SURVEY

Field Book No. E-1310

Date: Aug. 2, 1977

I hereby certify that the above plat is a true and correct representation of the survey made in Section 35, T 6 N, R 16 E, Pittsburg County, Oklahoma.

SULLIVAN & GILBERT, INC.  
Consulting Engineers  
Under the supervision of  
U. S. ARMY ENGINEER DISTRICT, TULSA  
CORPS OF ENGINEERS

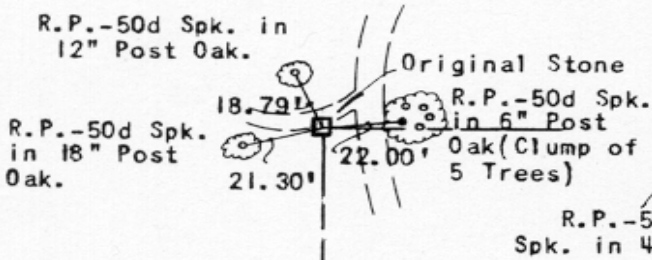
- LEGEND  
 ▲ - C OF E MON.  
 ○ - IRON PIN  
 □ - ORIG. STONE

*Sullivan & Gilbert*  
REGISTERED LAND SURVEYOR L. S. #122

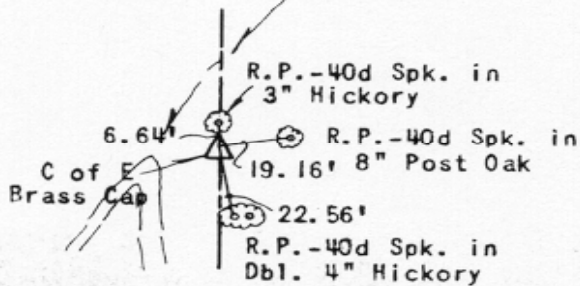
582

EUFAULA LAKE  
SECTION AND QUARTER SECTION  
CORNER REFERENCES FOR  
SECTION 35, T 6 N, R 16 E, PITTSBURG COUNTY

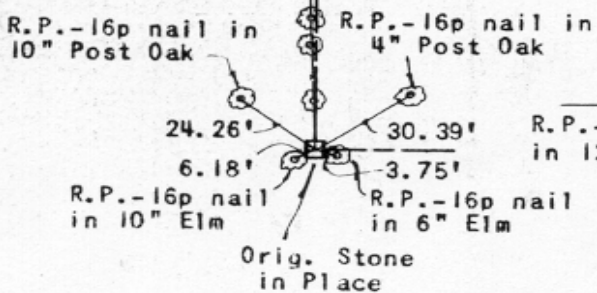
N.W. SECTION CORNER



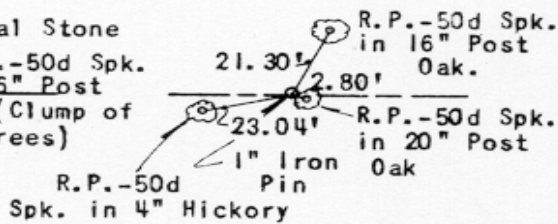
WEST ½ CORNER



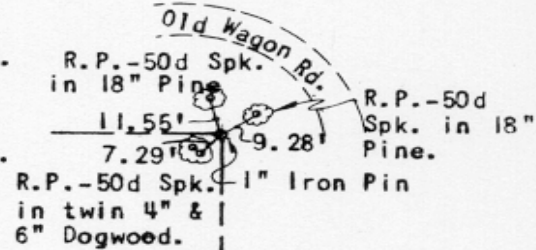
S.W. SECTION CORNER



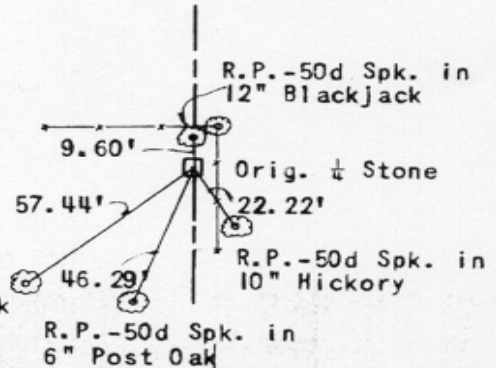
NORTH ½ CORNER



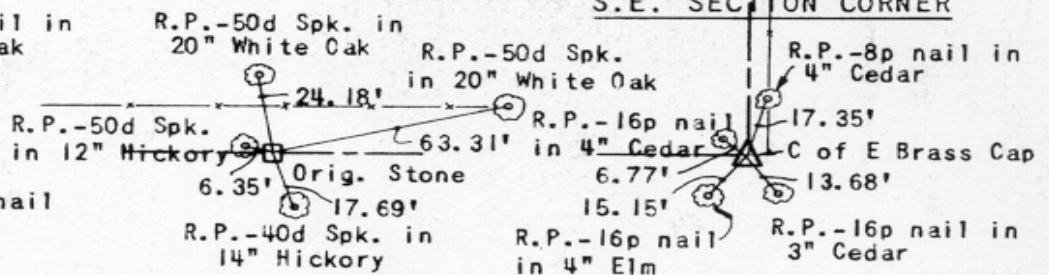
N.E. SECTION CORNER



EAST ½ CORNER



S.E. SECTION CORNER



Scale: 1"=50'  
Date: Aug. 2, 1977  
Field Book No. E-1310  
Sullivan & Gilbert, Inc.