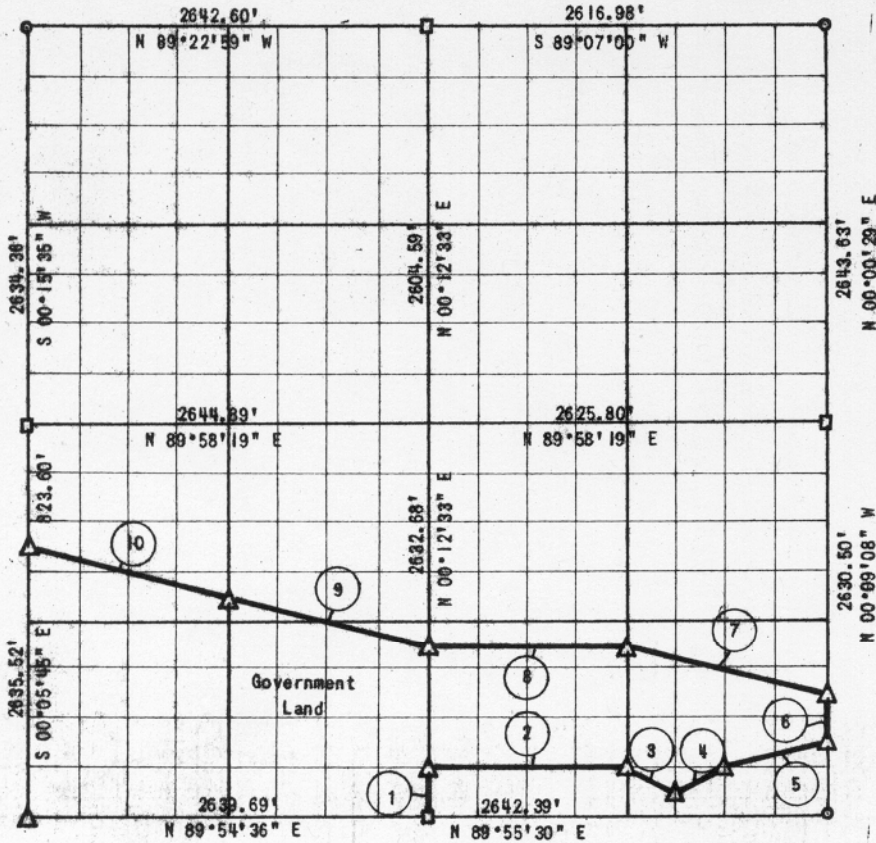


PARTIAL BOUNDARY SURVEY
 EUFAULA LAKE
 SECTION 36, T 6 N, R 16 E

Performed Under Contract No. DAWC 56-77-C-0097

PITTSBURG COUNTY



Course No.	Distance	Bearing	Course No.	Distance	Bearing
1	329.09'	N 00°12'33" E			
2	1320.10'	N 89°55'51" E			
3	368.61'	S 63°34'19" E			
4	368.86'	N 63°27'16" E			
5	680.01'	N 75°56'24" E			
6	328.81'	N 00°09'08" W			
7	1368.52'	N 76°02'52" W			
8	1317.57'	S 89°56'44" W			
9	1360.05'	N 76°03'15" W			
10	1360.91'	N 76°02'47" W			

CERTIFICATE OF SURVEY

Field Book No. E-1311

Date: Aug. 2, 1977

I hereby certify that the above plat is a true and correct representation of the survey made in Section 36, T 6 N, R 16 E, Pittsburg County, Oklahoma.

SULLIVAN & GILBERT, INC.
 Consulting Engineers

Under the supervision of
 U.S. ARMY ENGINEER DISTRICT, TULSA
 CORPS OF ENGINEERS

LEGEND

- △ - C OF E MON.
- - IRON PIN
- - ORIG. STONE

[Signature]
 REGISTERED LAND SURVEYOR L.S. #122

583

