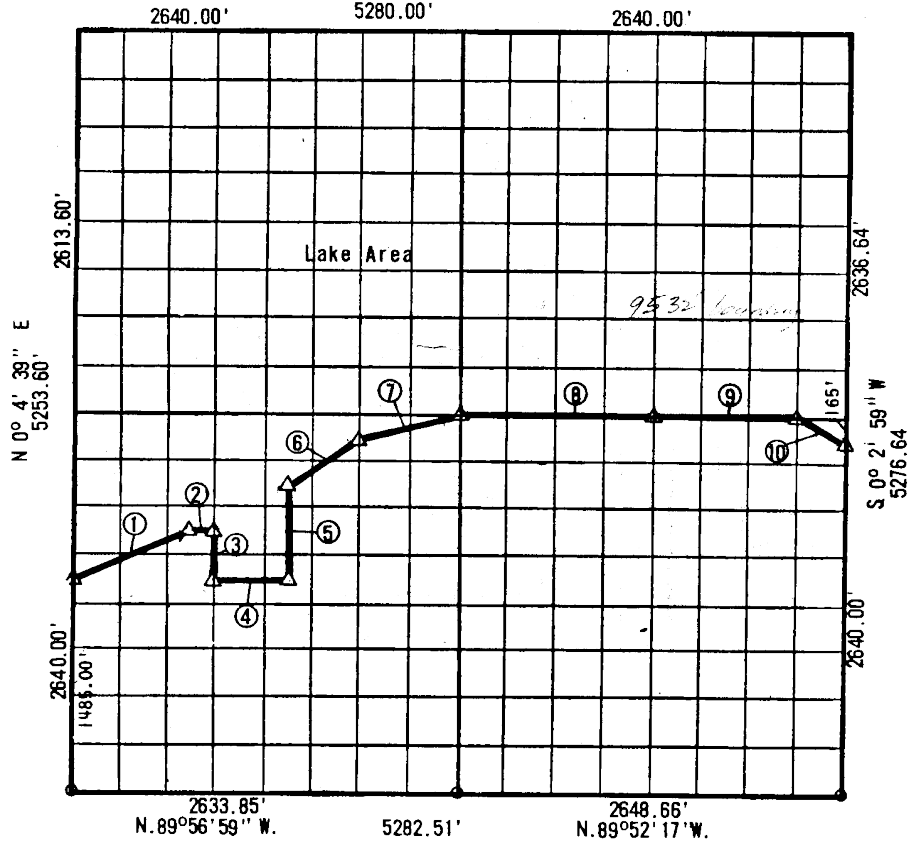


PARTIAL PRIMARY SURVEYS
LUFULA RESERVOIR, CANADIAN RIVER, OKLAHOMA
SEC. 4, T-6 -N, R- 16-E, PITTSBURG COUNTY, OKLAHOMA

N. 89° 50' 23" E.
5280.00'



COURSE NO.	DISTANCE	BEARING	COURSE NO.	DISTANCE	BEARING
1	887.32	N 68°15'24" E			
2	164.75	S 89°54'38" E			
3	330.00	S 0° 6' 9" W			
4	494.17	S 89°54'38" E			
5	660.00	N 0° 6' 54" E			
6	594.53	N 56°22'28" E			
7	679.67	N 76° 2'23" E			
8	1322.15	S 89°54'38" E			
9	991.62	S 89°54'38" E			
10	369.54	S 63°23'27" E			

Field Book No. E 1153

Date 4-23-71

BY GROSSMAN & KEITH ENGINEERING CO.
FOR

519

DEPARTMENT OF THE ARMY, CORPS OF ENGINEERS, TULSA DISTRICT
UNDER CONTRACT NO. DACW 56-71-C-0119

I, Guy N. Keith, a Registered Land Surveyor in the State of Oklahoma, do hereby certify that the above plat is a true and accurate survey of Section 4, T-6 -N, R- 16-E as made under my supervision.

G. Keith

LEGEND

- △ Std. C. of E. Conc. Monument
- Iron Pin
- Original Pin