

Course No.	Distance	Bearing	Course No.	Distance	Bearing
①	165.16	N 89°-49'-23" E	T-1	495.89	N 89°-55'-56" E
②	826.24	N 36°-45'-53" E	T-2	1303.65	N 0°-06'-22" W
③	330.18	N 0°-04'-54" W	T-3	1485.00	N 0°-05'-21" E
④	352.98	N 28°-00'-17" W	T-4	1317.89	N 89°-42'-47" E
⑤	164.96	N 0°-03'-33" W			
⑥	962.73	N 58°-48'-18" E			
⑦	521.86	N 71°-19'-42" E			
⑧	1329.36	N 82°-43'-55" E			
⑨	1410.47	N 69°-18'-29" E			

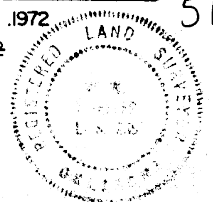
CERTIFICATE OF SURVEY Field Book No. E-1168 Date DEC. 1971 DEC. 1972

I HEREBY CERTIFY THAT THE ABOVE PLAT IS A TRUE AND CORRECT REPRESENTATION OF THE SURVEY MADE IN SECTION 5 T-6-N, R-16-E PITTSBURG COUNTY OKLAHOMA

**WHEELER & ASSOCIATES, ENGINEERS-SURVEYORS**  
Under the Supervision of

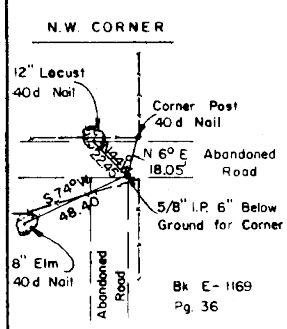
*W. W. Wheeler*  
REGISTERED LAND SURVEYOR

U.S. ARMY ENGINEER DISTRICT, TULSA  
CORPS OF ENGINEERS  
SHEET 1 OF 8



518

**EUFULA LAKE**  
 CANADIAN RIVER, OKLAHOMA  
**SECTION AND QUARTER SECTION CORNER**  
**REFERENCES FOR**  
**SEC. 5 T. 6 N., R. 16 E. COUNTY PITTSBURG**



NORTH 1/4 CORNER  
IN LAKE

N.E. CORNER  
IN LAKE

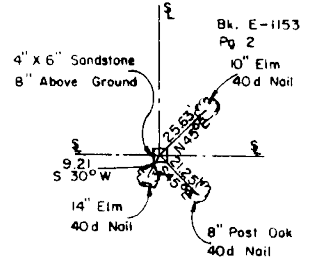
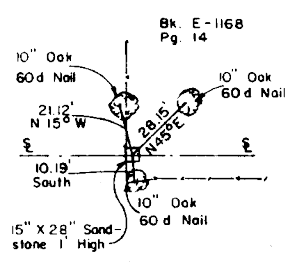
WEST 1/4 CORNER  
IN LAKE

EAST 1/4 CORNER  
IN LAKE

S.W. CORNER  
IN LAKE

SOUTH 1/4 CORNER

S.E. CORNER  
(By Others)



Scale: 1" = 50'  
 Date  
 Field book No. E-1153  
 E-1168  
 E-1169

SURVEYED BY  
**WHEELER & ASSOCIATES, ENGINEERS-SURVEYORS**  
 TULSA, OKLAHOMA

**LEGEND**  
 △ Monument Set  
 □ Original Corner Found  
 ● Iron Pin