

N

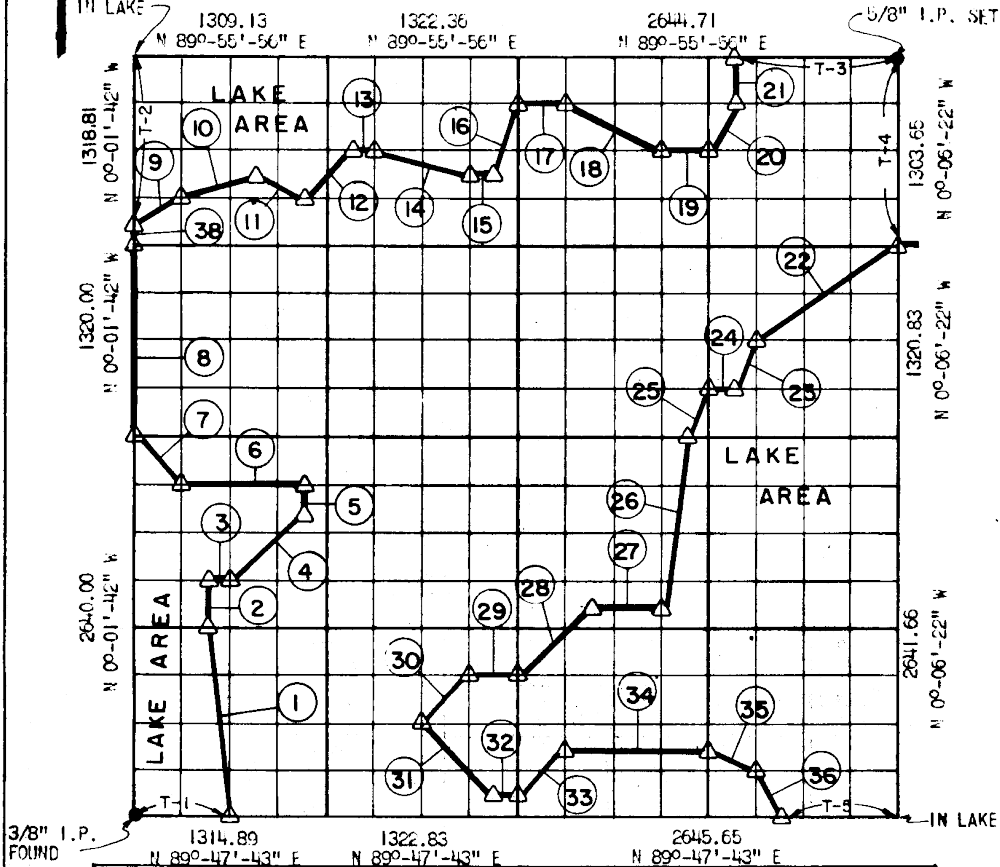
LEGEND

- △ MONUMENT SET
- ORIGINAL CORNER FOUND
- IRON PIN

PARTIAL BOUNDARY SURVEYS
EUFALA LAKE, AREA "K"
CANADIAN RIVER, OKLAHOMA.

Performed Under Contract Number DACW 56-72-C-0017

SEC 6 T 6 N R 16 E COUNTY PITTSBURG



Course No.	Distance	Bearing	Course No.	Distance	Bearing
(24)	165.32	N 89°-46'-28" E	(34)	992.08	S 89°-47'-31" W
(25)	369.55	N 26°-28'-26" E	(35)	369.33	N 63°-39'-31" W
(26)	1167.61	N 8°-02'-24" E	(36)	358.99	N 26°-43'-31" W
(27)	496.01	N 89°-47'-05" E	T-1	653.48	N 89°-47'-43" E
(28)	701.58	N 44°-53'-42" E	T-2	1153.81	N 0°-01'-42" W
(29)	330.68	N 89°-47'-18" E	T-3	1157.06	N 89°-55'-56" E
(30)	467.70	N 44°-54'-00" E	T-4	1303.65	N 0°-06'-22" W
(31)	700.17	N 45°-12'-15" W	T-5	826.76	N 89°-47'-43" E
(32)	165.35	S 89°-47'-38" W			
(33)	467.70	S 44°-53'-58" W			

CERTIFICATE OF SURVEY

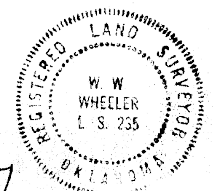
Field Book No. E-1169 Date DEC. 1971
SURVEYED BY Revised AUG. 1972

I HEREBY CERTIFY THAT THE ABOVE PLAT IS A TRUE AND CORRECT REPRESENTATION OF THE SURVEY MADE IN SECTION 6 T-6-N, R-16-E PITTSBURG COUNTY OKLAHOMA

WHEELER & ASSOCIATES, ENGINEERS-SURVEYORS
Under the Supervision of

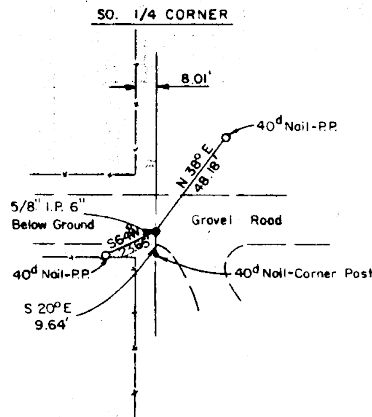
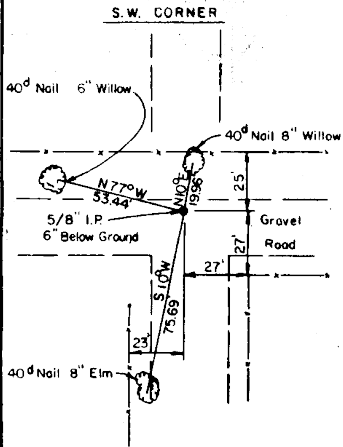
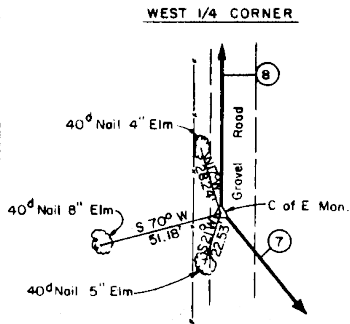
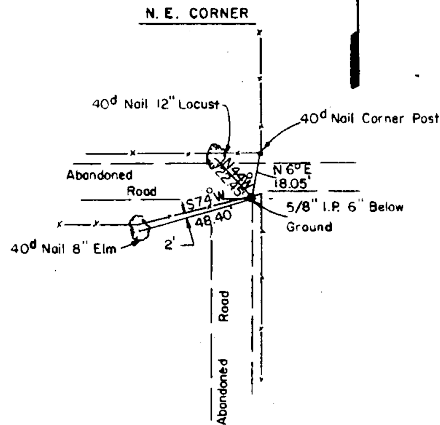
W. W. Wheeler
REGISTERED LAND SURVEYOR

U.S. ARMY ENGINEER DISTRICT, TULSA
CORPS OF ENGINEERS
SHEET 3 OF 8



517

EUFULA LAKE
 CANADIAN RIVER, OKLAHOMA
SECTION AND QUARTER SECTION CORNER
 REFERENCES FOR
SEC. 6 T 6 N, R 16 E COUNTY PITTSBURG



Scale: 1" = 50'
 Date DEC. 1971
 Field book No. E-1169

SURVEYED BY
WHEELER & ASSOCIATES, ENGINEERS-SURVEYORS
 TULSA, OKLAHOMA

LEGEND
 △ Monument Set
 □ Original Corner Found
 ● Iron Pin