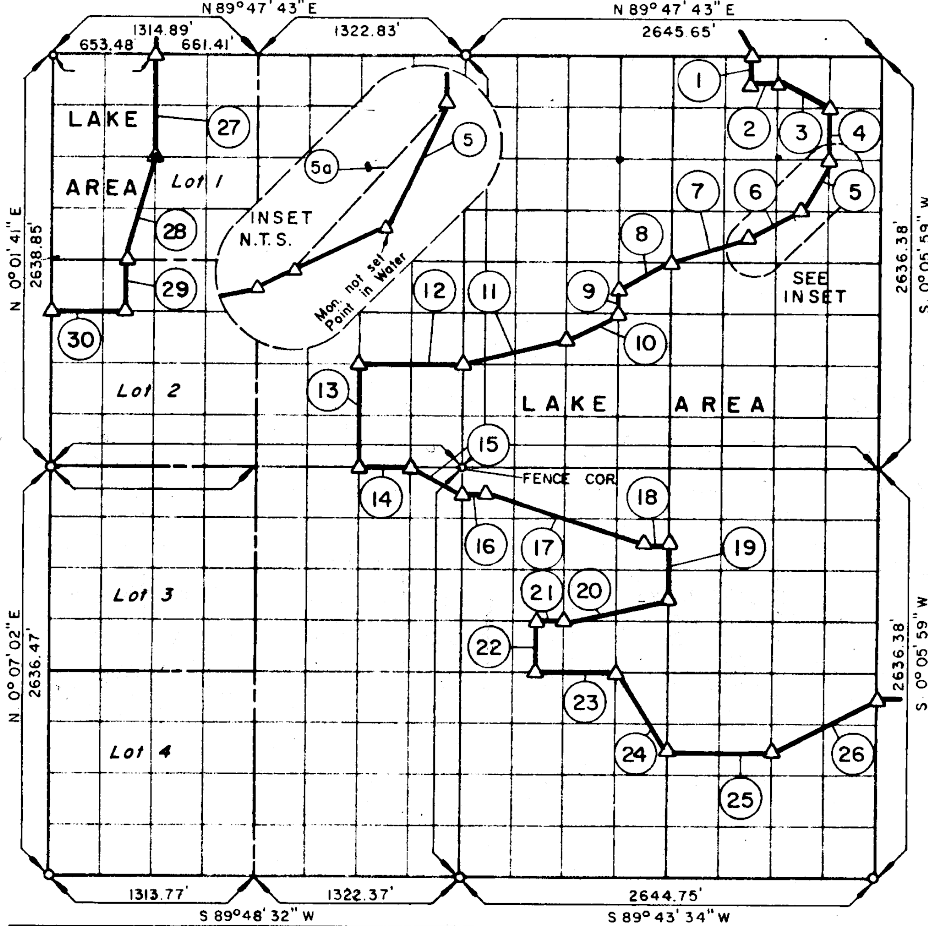


PARTIAL BOUNDARY SURVEYS  
 EUFAULA LAKE AREA "M"  
 CANADIAN RIVER, OKLAHOMA

SEC. 7 T-6-N R-16-E COUNTY PITTSBURG



Course No.	Distance	Bearing	Course No.	Distance	Bearing
1	165.70	S 0° 04' 30" E	13	668.01	S 0° 11' 20" E
2	165.25	N 89° 43' 51" E	14	337.09	S 89° 14' 31" E
3	368.70	S 63° 39' 31" E	15	374.26	S 63° 34' 54" E
4	330.28	S 0° 01' 47" W	16	163.86	N 88° 49' 24" E
5	370.70	S 26° 25' 00" W	17	1027.29	S 72° 39' 10" E
5a	590.99	S 40° 57' 50" W	18	164.05	N 88° 56' 37" E
6	370.15	S 62° 49' 01" W	19	326.84	S 0° 22' 44" W
7	522.50	S 70° 47' 28" W	20	680.82	S 75° 14' 21" W
8	370.10	S 62° 31' 30" W	21	164.34	S 89° 07' 27" W
9	166.62	S 0° 14' 59" E	22	325.07	S 0° 33' 13" W
10	370.07	S 62° 19' 47" W	23	493.60	N 89° 14' 41" E
11	679.25	S 74° 48' 02" W	24	585.00	S 33° 50' 38" E
12	670.99	N 89° 28' 58" W	25	659.30	N 89° 25' 30" E

CERTIFICATE OF SURVEY

I HEREBY CERTIFY THAT THE ABOVE PLAT IS A TRUE AND CORRECT REPRESENTATION OF THE SURVEY MADE IN SECTION 7, T-6-N, R-16-E, PITTSBURG COUNTY, OKLAHOMA.

*Jack C. Cox*  
 REGISTERED LAND SURVEYOR

Field Book No. E-1175, Date 9-18-73

K. N. COX & ASSOCIATES - ENGINEERS

Under the Supervision of

U.S. ARMY ENGINEER DISTRICT, TULSA  
 CORPS OF ENGINEERS

SHEET 1 of 2

LEGEND

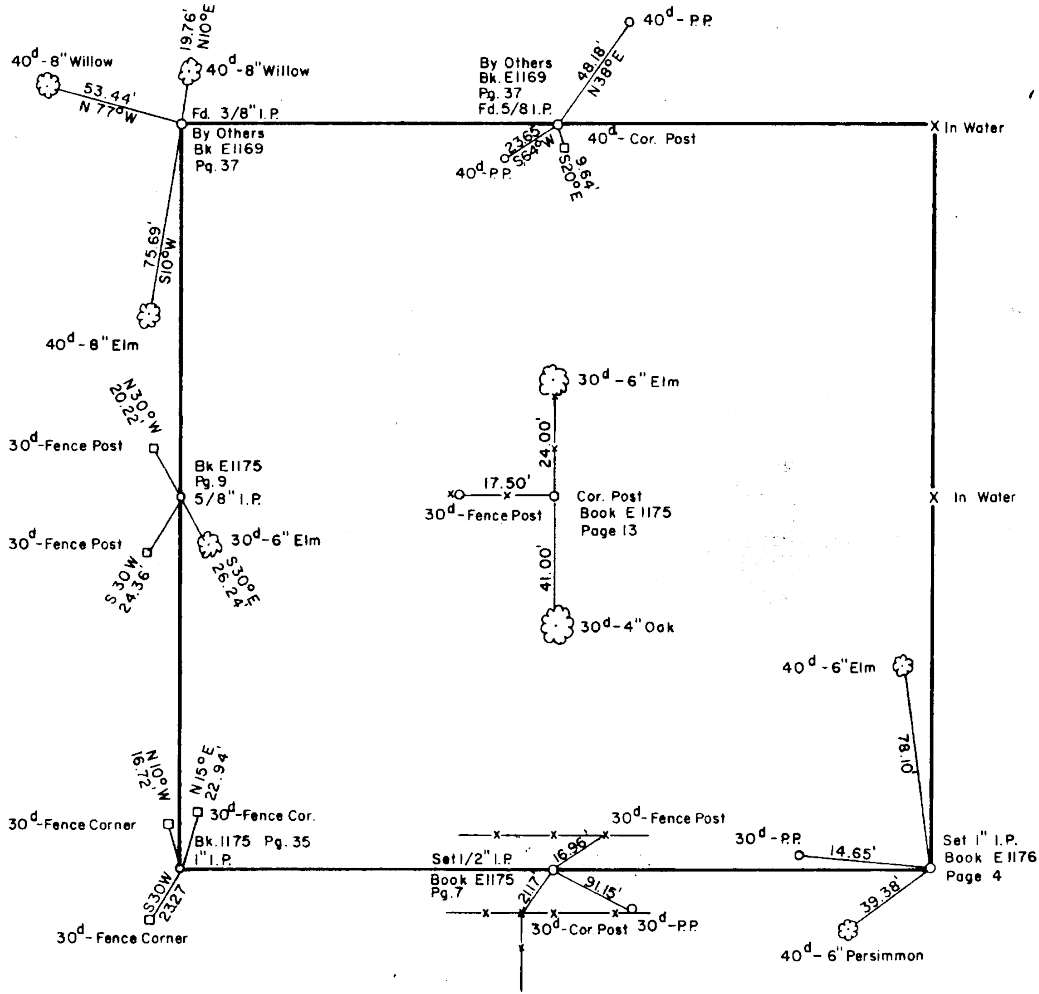
- △ MONUMENT
- ORIGINAL CORNER
- IRON PIN

536

REVISED, 9-18-73

PARTIAL BOUNDARY SURVEYS  
 EUFAULA LAKE AREA "M"  
 CANADIAN RIVER, OKLAHOMA

SEC. 7 T-6-N R-16-E COUNTY PITTSBURG



Course No.	Distance	Bearing	Course No.	Distance	Bearing
26	740.51	N 63° 00' 03" E	30	487.36	N 89° 36' 11" W
27	662.46	S 0° 03' 31" W			
28	682.14	S 14° 04' 32" W			
29	330.88	S 0° 03' 44" W			

Field Book No. E1175

Date 9-1-72

K. N. COX & ASSOCIATES - ENGINEERS

Under the Supervision of

U.S. ARMY ENGINEER DISTRICT, TULSA  
 CORPS OF ENGINEERS

SHEET 2 of 2

*Handwritten signature: Jack C. Cox*

LEGEND

- △ MONUMENT
- ORIGINAL CORNER
- IRON PIN