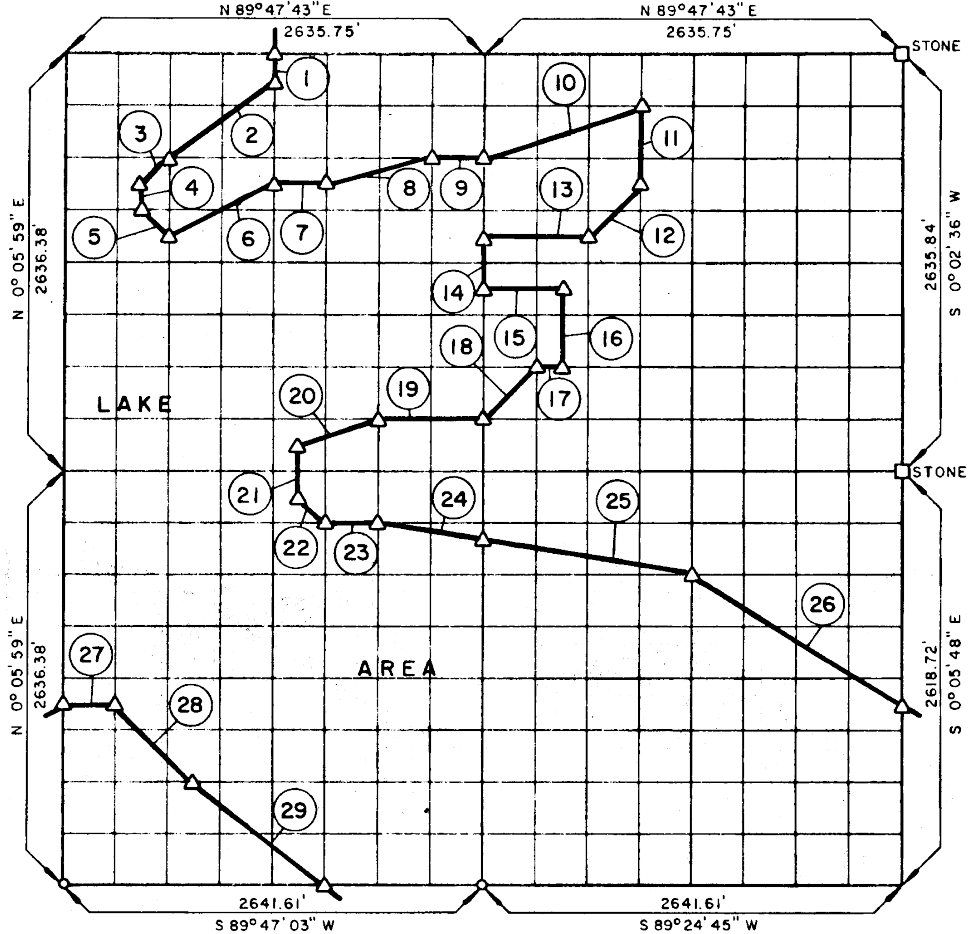


PARTIAL BOUNDARY SURVEYS  
 EUFAULA LAKE AREA "M"  
 CANADIAN RIVER, OKLAHOMA

SEC. 8 T-6-N R-16-E COUNTY PITTSBURG



Course No.	Distance	Bearing	Course No.	Distance	Bearing
1	164.76	S 0°04'04\" W	14	329.51	S 0°02'10\" W
2	825.77	S 53°01'30\" W	15	494.17	N 89°47'31\" E
3	233.62	S 44°56'32\" W	16	494.26	S 0°02'15\" W
4	164.77	S 0°05'16\" W	17	164.72	S 89°47'27\" W
5	232.46	S 45°03'59\" E	18	466.94	S 44°54'23\" W
6	738.45	N 63°17'22\" E	19	659.58	S 89°47'25\" W
7	329.58	N 89°47'36\" E	20	522.14	S 71°23'50\" W
8	680.14	N 75°46'32\" E	21	329.53	S 0°03'50\" W
9	329.56	N 89°47'38\" E	22	232.58	S 45°06'20\" E
10	1043.19	N 71°22'52\" E	23	329.88	N 89°47'20\" E
11	494.25	S 0°02'20\" W	24	668.27	S 80°48'30\" E
12	466.94	S 44°54'42\" W	25	1335.46	S 80°48'30\" E
13	658.90	S 89°47'34\" W	26	1549.27	S 58°25'13\" E

Field Book No. E-1176 , Date 9-18-73

CERTIFICATE OF SURVEY

I HEREBY CERTIFY THAT THE ABOVE PLAT IS A TRUE AND CORRECT REPRESENTATION OF THE SURVEY MADE IN SECTION

8, T-6-N, R-16-E, PITTSBURG COUNTY, OKLAHOMA

*[Signature]*  
 REGISTERED LAND SURVEYOR

K. N. COX & ASSOCIATES - ENGINEERS

Under the Supervision of

U.S. ARMY ENGINEER DISTRICT, TULSA  
 CORPS OF ENGINEERS

SHEET 1 of 2

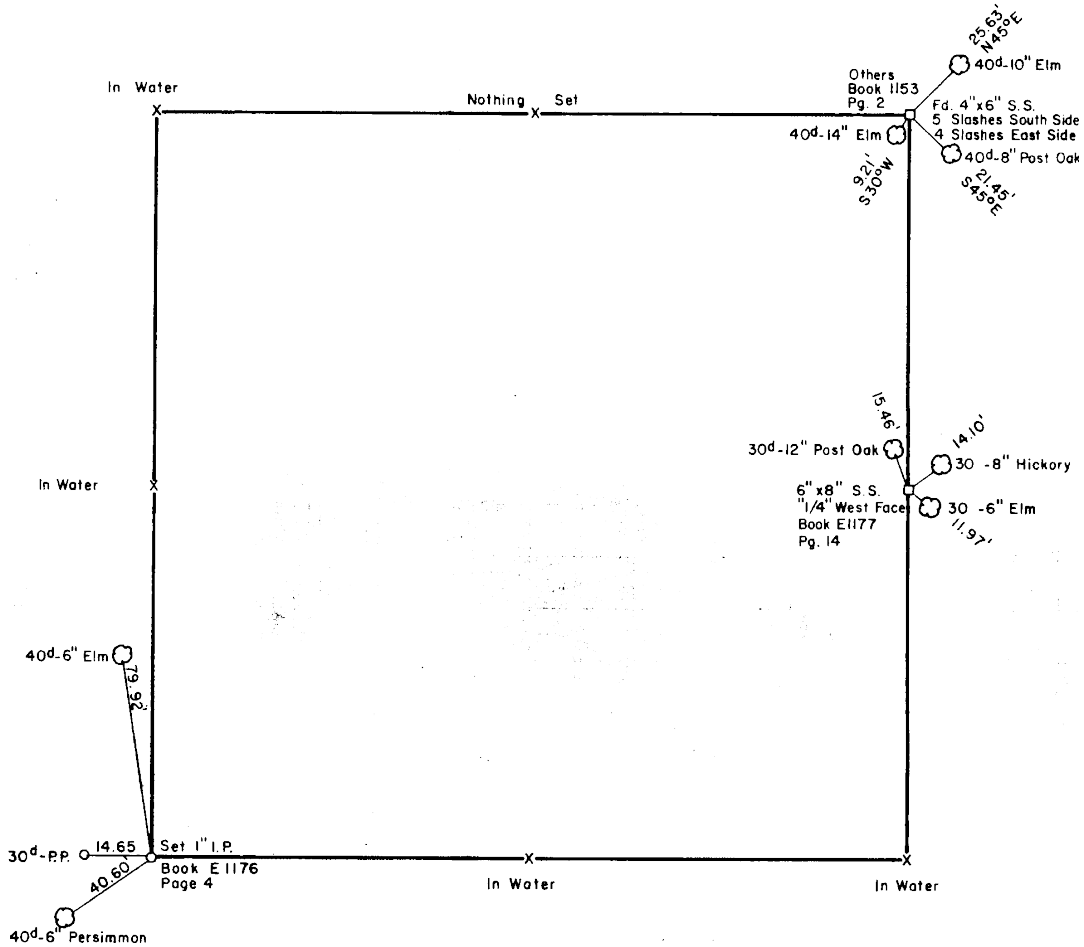
LEGEND

- ▲ MONUMENT
- ORIGINAL CORNER
- IRON PIN

537

PARTIAL BOUNDARY SURVEYS  
 EUFAULA LAKE AREA "M"  
 CANADIAN RIVER, OKLAHOMA

SEC. 8 T-6-N R-16-E COUNTY PITTSBURG



Course No.	Distance	Bearing	Course No.	Distance	Bearing
27	330.04	N 89° 47' 11" E			
28	697.80	S 45° 06' 40" E			
29	1053.67	S 51° 29' 49" E			

Field Book No. E1176

Date 9-1-72

K.N. COX & ASSOCIATES - ENGINEERS

Under the Supervision of

U.S. ARMY ENGINEER DISTRICT, TULSA  
 CORPS OF ENGINEERS

SHEET 2 of 2

LEGEND

- △ MONUMENT
- ORIGINAL CORNER
- IRON PIN

*John C. Cox*