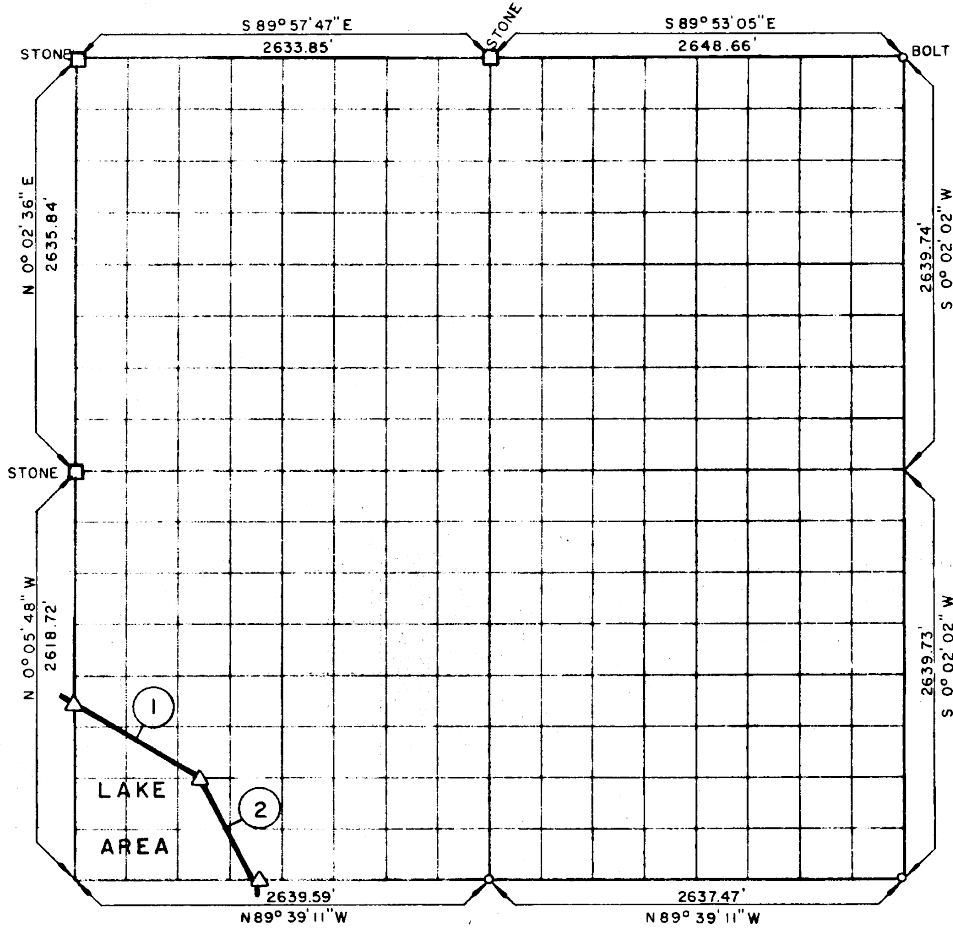


PARTIAL BOUNDARY SURVEYS
 EUFAULA LAKE AREA "M"
 CANADIAN RIVER, OKLAHOMA

SEC 9 T-6-N R-16-E COUNTY PITTSBURG



Course No.	Distance	Bearing	Course No.	Distance	Bearing
1	962.82	S 59° 02' 57" E			
2	736.13	S 26° 43' 22" E			

Field Book No. E-1177, Date 9-1-72

538

CERTIFICATE OF SURVEY

I HEREBY CERTIFY THAT THE ABOVE PLAT IS A TRUE AND CORRECT REPRESENTATION OF THE SURVEY MADE IN SECTION 9, T-6-N, R-16-E, PITTSBURG COUNTY, OKLAHOMA

[Signature]
 REGISTERED LAND SURVEYOR

K.N. COX & ASSOCIATES - ENGINEERS

Under the Supervision of

U.S. ARMY ENGINEER DISTRICT, TULSA
 CORPS OF ENGINEERS

SHEET 1 of 2

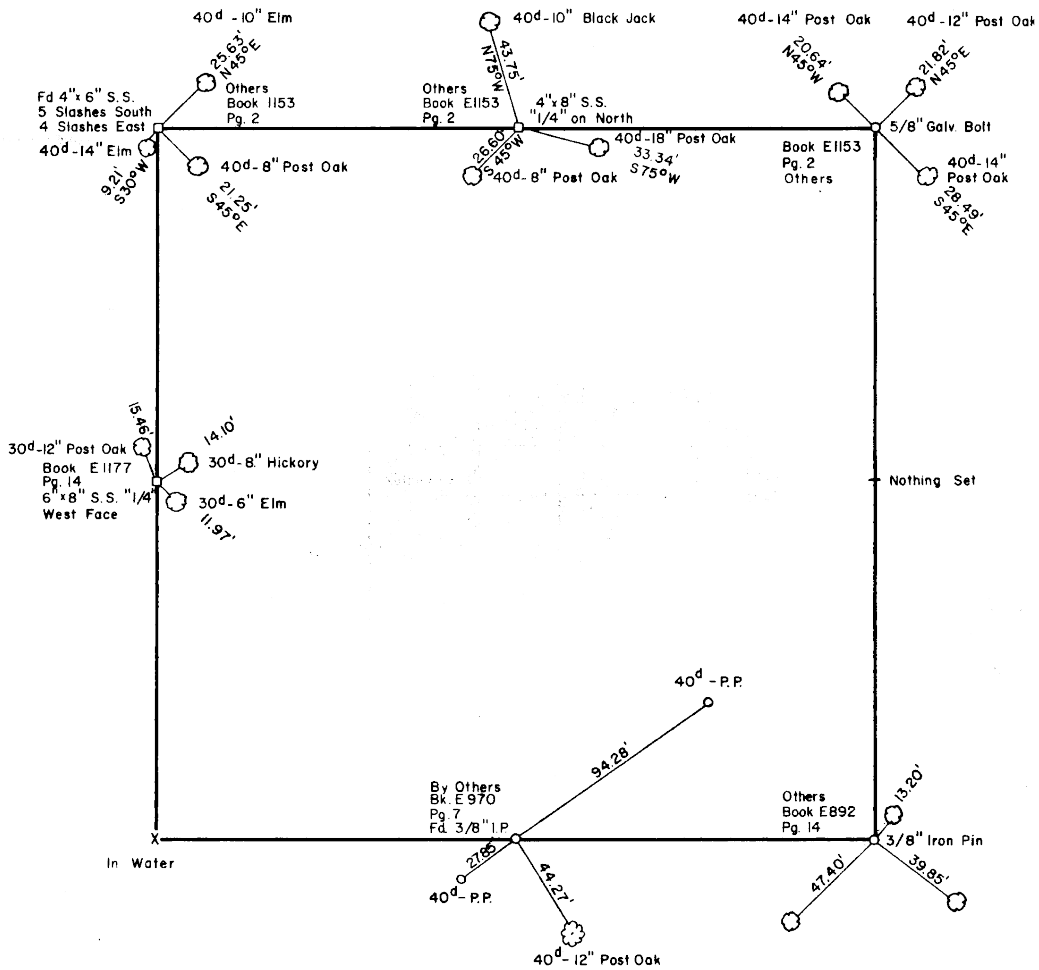
LEGEND

- Δ MONUMENT
- ORIGINAL CORNER
- IRON PIN

REVISED 9-18-72

PARTIAL BOUNDARY SURVEYS
 EUFAULA LAKE AREA "M"
 CANADIAN RIVER, OKLAHOMA

SEC. 9 T-6-N R-16-E COUNTY PITTSBURG



Field Book No. E1177

Date 9-1-72

K. N. COX & ASSOCIATES - ENGINEERS

Under the Supervision of

U.S. ARMY ENGINEER DISTRICT, TULSA
 CORPS OF ENGINEERS

SHEET 2 of 2

Handwritten signature: Jack Cox

LEGEND

- △ MONUMENT
- ORIGINAL CORNER
- IRON PIN