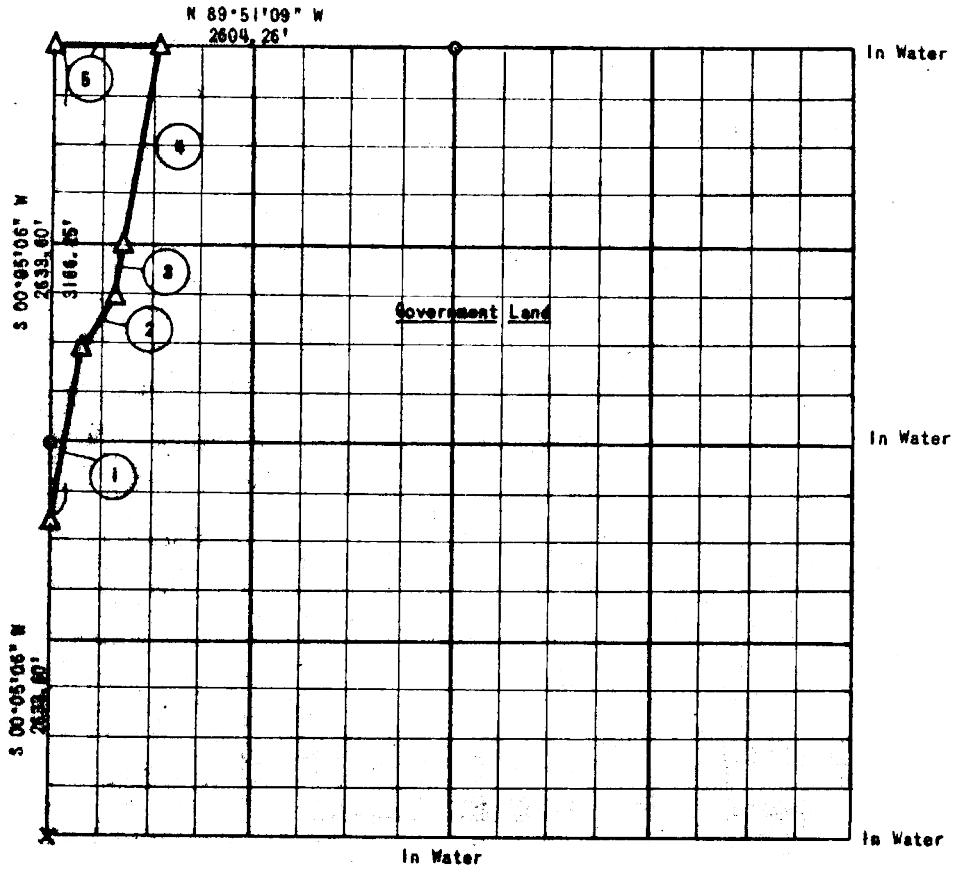


PARTIAL SURVEY
EUFAULA LAKE

SECTION 11, T 7 N, R 15 E

Performed Under Contract No. DACW 56-77-C-0097

PITTSBURG COUNTY



Course No.	Distance	Bearing	Course No.	Distance	Bearing
1	1179.91'	N 10°21'32" E			
2	373.63'	N 25°52'00" E			
3	366.11'	N 10°21'32" E			
4	1300.21'	N 10°21'32" E			
5	676.42'	N 89°51'09" W			

CERTIFICATE OF SURVEY

Field Book No. E-1323

Date: Aug. 2, 1977

I hereby certify that the above plat is a true and correct representation of the survey made in Section 11, T 7 N, R 15 E, Pittsburg County, Oklahoma.

SULLIVAN & GILBERT, INC.
Consulting Engineers
Under the supervision of
U.S. ARMY ENGINEER DISTRICT, TULSA
CORPS OF ENGINEERS

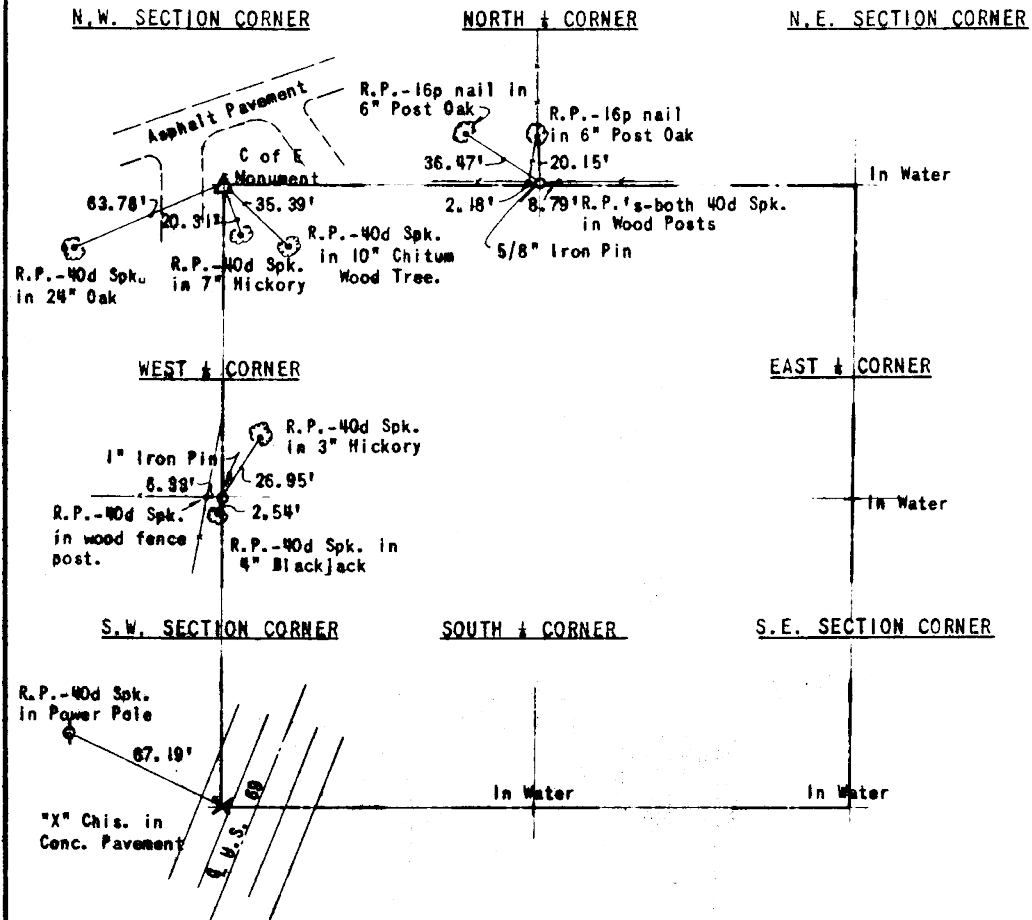
LEGEND

- △ - C OF E MON.
- ⊕ - IRON PIN
- ⊞ - ORIG. STONE

[Signature]
REGISTERED LAND SURVEYOR L.S. #122

469

EUFULA LAKE
SECTION AND QUARTER SECTION
CORNER REFERENCES FOR
SECTION 11, T 7 N, R 15 E, PITTSBURG COUNTY



Scale: 1"=50'
Date: August 2, 1977
Field Book No. E-1323
Sullivan & Gilbert, Inc.