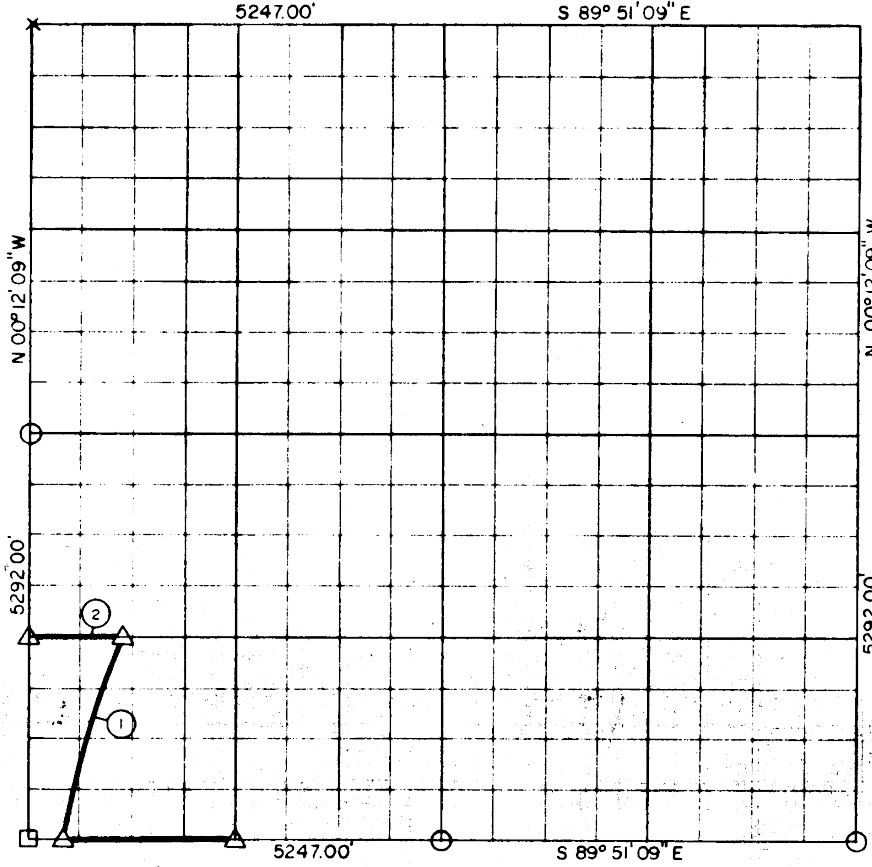


SEC. 14, T 7 N, R 15 E, PITTSBURG COUN



Course No.	Distance	Bearing	Course No.	Distance	Bearing
1	L = 1371.00'	R = 5729.56'			
2	591.75'	N 89° 51' 09\" W			
	1962.75				

Book No. E-980

Date: February, 1965

475

I, Jack R. Kalman, a Registered Professional Engineer, do hereby certify that the above plot is a true and accurate survey of Sec. 14, T 7 N, R 15 E as made under my supervision.

1962.75

Jack R. Kalman
 JACK R. KALMAN
 Reg. Prof. Engr. No. 2786