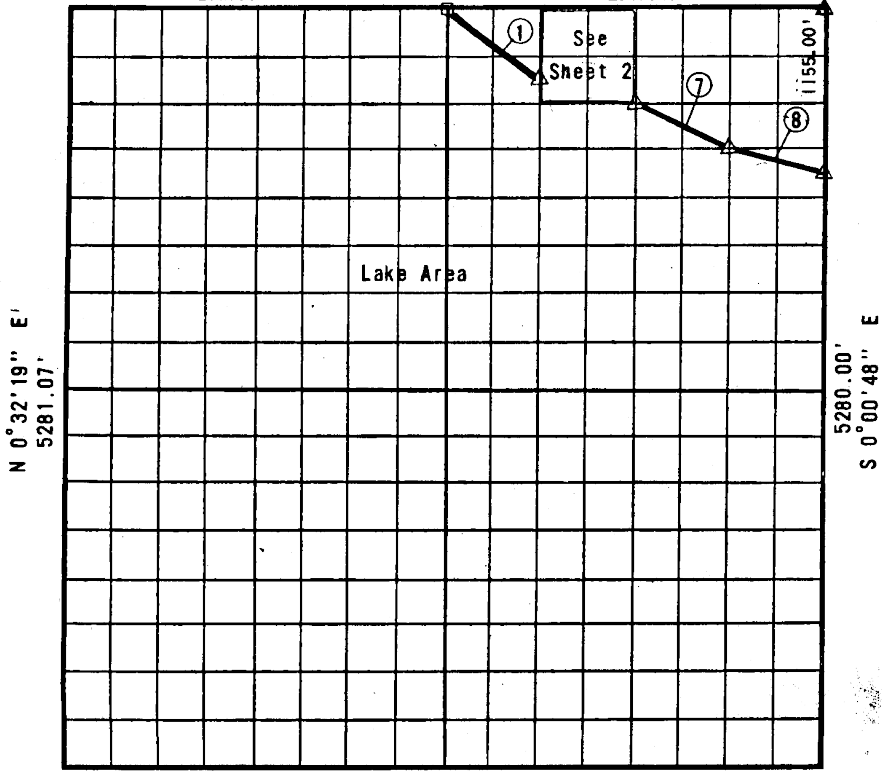


PARTIAL SURVEY SURVEYS Sheet 1 of 2
 LAULA RESERVOIR, CADIAN RIVER, OKLAHOMA
 SEC. 1, T-7-N, R-15-E, PITTSBURG COUNTY, OKLAHOMA

S 89°26'38" E
 2620.94'

S 89°41'16" E
 2640.49'



N 0°32'19" E
 5281.07'

S 0°00'48" E
 5280.00'

5312.27'
 N 89°34'46" W

COURSE NO.	DISTANCE	BEARING	COURSE NO.	DISTANCE	BEARING
1	825.86	S 52°57'00" E			
2	23.22	S 0°06'50" W			
3	50.04	S 89°39'55" E			
4	91.79	S 0°06'38" W			
5	255.38	S 78°22'05" E			
6	360.33	S 89°39'32" E			
7	739.98	S 63°11'21" E			
8	682.17	S 75°38'52" E			

Field Book No. E 1155 Date 5-7-71

BY GROSSMAN & KEITH ENGINEERING CO.
 FOR
 DEPARTMENT OF THE ARMY, CORPS OF ENGINEERS, TULSA DISTRICT
 UNDER CONTRACT NO. DACW 56-71-C-0119

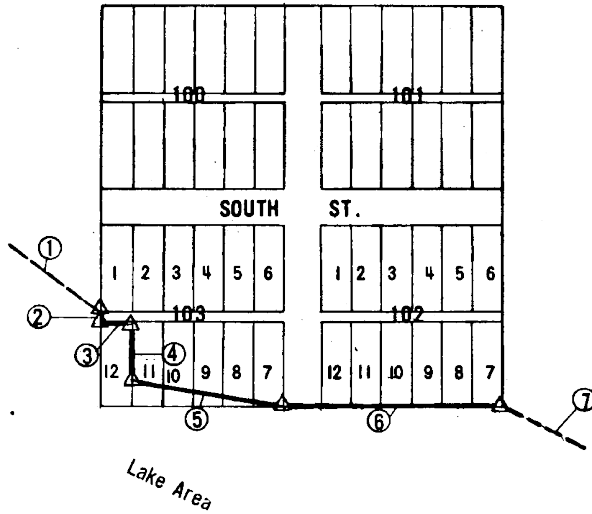
I, Guy N. Keith, a Registered Land Surveyor in the State of Oklahoma, do
 hereby certify that the above plat is a true and accurate survey of
 Section 1, T-7-N, R-15-E as made under my supervision.
 Guy N. Keith
 No. 541 (Oklahoma)

LEGEND
 Δ Std. C. of E. Conc. Monument
 ○ Iron Pin
 □ Original Pin

459

PARTIAL () SURVEYS
 FAULA RESERVOIR, ADIAN RIVER, OKLA. A
 SEC. 1, T-7-N, R-15-E, PITTSBURG COUNTY, OKLAHOMA

CROWDER, OKLAHOMA



COURSE NO.	DISTANCE	BEARING	COURSE NO.	DISTANCE	BEARING

Field Book No. E 1155 Date 5-7-71

BY GROSSMAN & KEITH ENGINEERING CO.

FOR
 DEPARTMENT OF THE ARMY, CORPS OF ENGINEERS, TULSA DISTRICT
 UNDER CONTRACT NO. DACW 56-71-C-0119

I, Guy N. Keith, a Registered Land Surveyor in the State of Oklahoma, do hereby certify that the above plat is a true and accurate survey of Section 1, T-7-N, R-15-E as made under my supervision.

- LEGEND
- △ Std. C. of E. Conc. Monument
 - Iron Pin
 - Original Pin

Guy N. Keith
 Reg. No. 541 (Oklahoma)