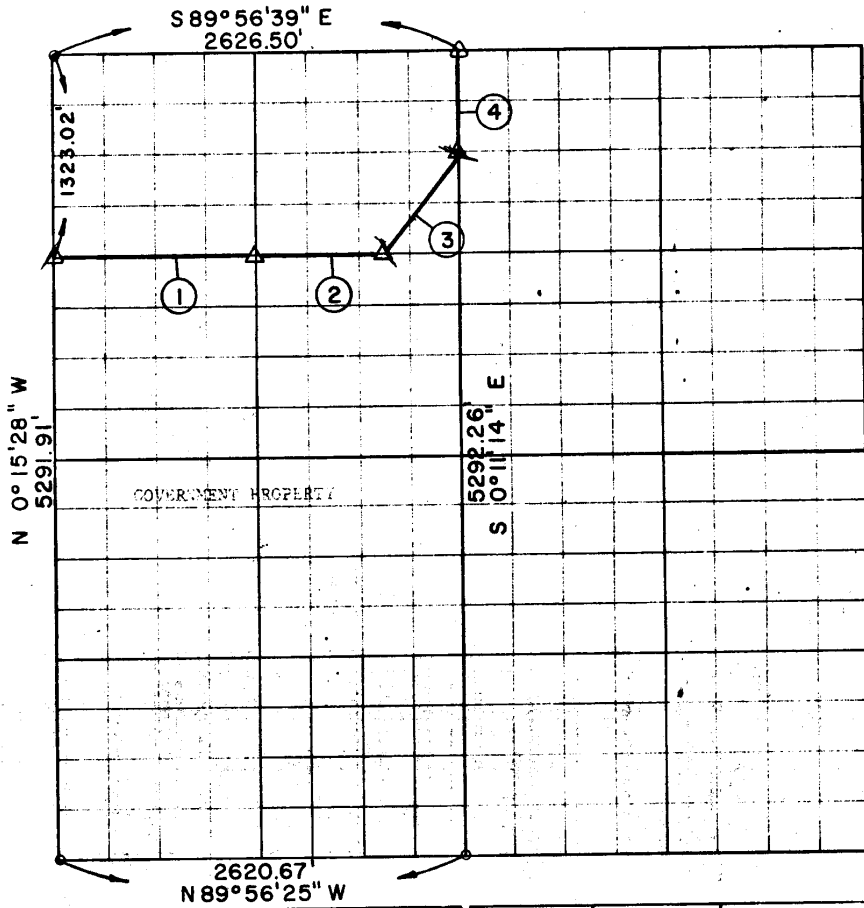


PARTIAL SURVEYS
 AREA LAKE
 CANADIAN V. LAHOMA
 Performed Under Contract Number DACW56-71-C-

SEC. 26 T-7 N R-15 E COUNTY PITTSBURG



COURSE NUMBER	DISTANCE	BEARING	COURSE NUMBER	DISTANCE	BEARING
1.	1323.02	S89°56'05\"E			
2.	820.33	S89°56'05\"E			
3.	822.43	N36°29'45\"E			
4.	661.53	N 0°11'41\"W			

Field Book No. E1150 Dated 8-12-71
 POE AND ASSOCIATES, INC. - ENGINEERS
 Under the Supervision of
 U.S. ARMY CORPS OF ENGINEERS TULSA, DISTRICT

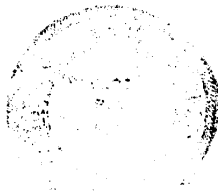
CERTIFICATE OF SURVEY

I hereby certify that the above plat is a true and correct representation of the survey made in section 26, T 7 N, R 15 E, Pittsburg County, Oklahoma.

Robert C. Poe
 Robert C. Poe
 Registered Land Surveyor
 No. 602

LEGEND

- ▲ MONUMENT
- ORIGINAL STONE
- IRON PIN



490