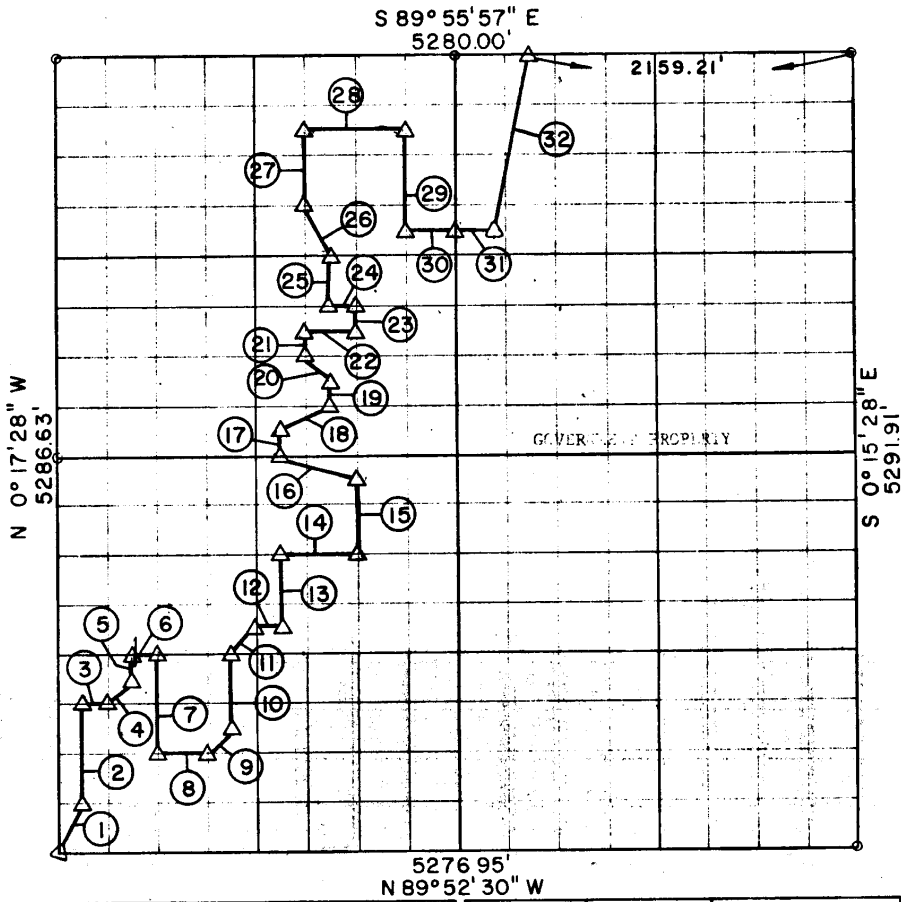


PARTIAL SURVEYS
 AREA " LAKE
 CANADIAN AHOMA
 Performed Under Order of DACW56-71-C-

SEC. 27 T-7 N R-15 E COUNTY PITTSBURG



COURSE NUMBER	DISTANCE	BEARING	COURSE NUMBER	DISTANCE	BEARING
1.	368.24	N26°18'51\" E	17	165.26	N 0°16'45\" W
2.	660.87	N 0°17'23\" W	18	368.03	N63°24'41.5\" E
3.	164.92	S89°53'09\" E	19	165.27	N 0°16'35\" W
4.	233.80	N45°08'49\" E	20	234.254	N45°02'28.4\" W
5.	165.23	N 0°17'14\" W	21	165.26	N 0°16'40\" W
6.	164.93	S89°53'22\" E	22	329.94	S89°54'47\" E
7.	660.94	S 0°17'09\" E	23	165.27	N 0°16'31\" W
8.	324.84	S89°52'56\" E	24	164.97	N89°54'53\" W
9.	232.65	N44°51'38.35\" E	25	330.54	N 0°16'36\" W
10.	495.74	N 0°16'55\" W	26	370.34	N26°43'51\" W
11.	232.674	N44°51'32.7\" E	27	495.79	N 0°16'40\" W
12.	164.93	S89°53'28\" E	28	659.96	S89°55'37\" E
13.	495.78	N 0°16'45\" W	29	661.14	S 0°16'22\" E
14.	494.82	S89°53'48\" E	30	329.96	S89°55'11\" E
15.	495.78	N 0°16'31\" W	31	269.66	S89°55'57\" E
16.	522.743	N71°28'24.5\" W	32	1175.30	N10°13'53\" E

Field Book No. E1151 Dated 8-12-71
 POE AND ASSOCIATES, INC. - ENGINEERS
 Under the Supervision of
 U.S. ARMY CORPS OF ENGINEERS TULSA, DISTRICT

489

CERTIFICATE OF SURVEY

I hereby certify that the above plat is a true and correct representation of the survey made in Section 27, T 7 N, R 15 E, Pittsburg County, Oklahoma.

Robert C. Poe
 Registered Land Surveyor
 No. 602

LEGEND

- △ MONUMENT
- ORIGINAL STONE
- IRON PIN

