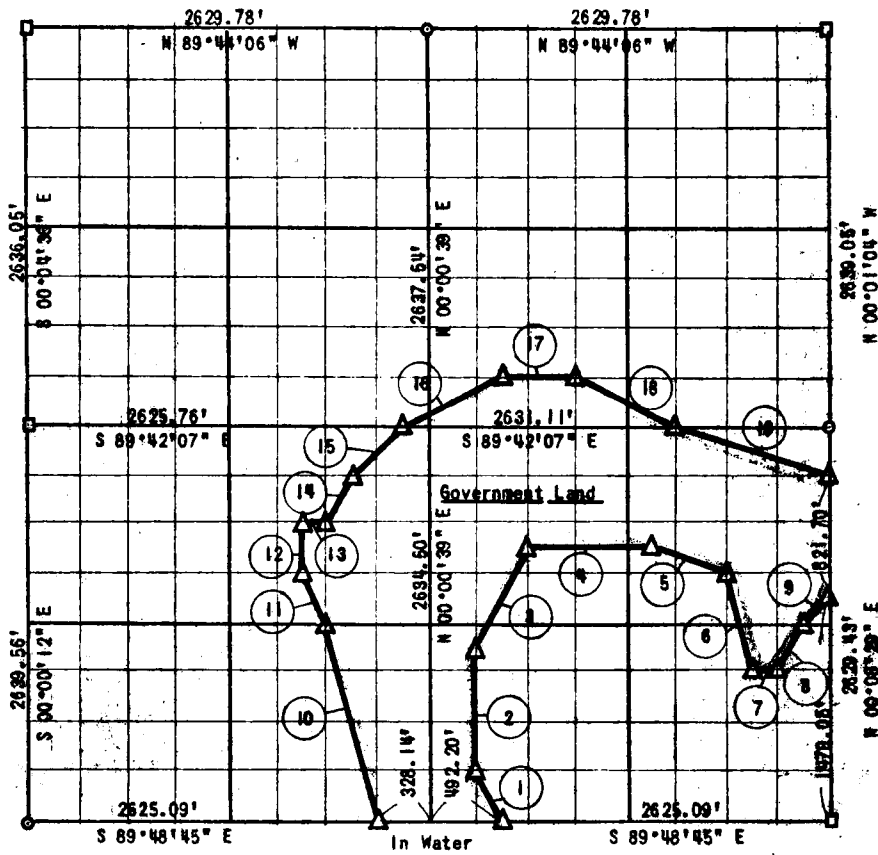


EUFULA LAKE  
SECTION 32, T 7 N, R 15 E

Performed Under Contract No. DACW 56-77-C-0097

PITTSBURG COUNTY



Course No.	Distance	Bearing	Course No.	Distance	Bearing
1	388.32'	N 26°26'14" W	13	164.10'	S 89°48'47" E
2	823.08'	N 00°01'37" E	14	367.37'	N 26°32'22" E
3	734.71'	N 26°35'56" E	15	463.95'	N 45°02'40" E
4	821.63'	S 89°44'11" E	16	733.99'	N 63°36'15" E
5	520.40'	S 71°18'27" E	17	493.30'	S 89°42'22" E
6	676.20'	S 13°54'12" E	18	737.94'	S 53°08'00" E
7	163.40'	S 89°46'15" E	19	1040.82'	S 71°08'30" E
8	366.71'	N 26°41'47" E			
9	232.15'	N 45°10'40" E			
10	1358.98'	N 13°56'45" W			
11	308.71'	N 26°25'08" W			
12	329.51'	N 00°00'23" E			

CERTIFICATE OF SURVEY

Field Book No. E-1317

Date: Aug 2, 1977

I hereby certify that the above plat is a true and correct representation of the survey made in Section 32, T 7 N, R 15 E, Pittsburg County, Oklahoma.

SULLIVAN & GILBERT, INC.  
Consulting Engineers  
Under the supervision of  
U.S. ARMY ENGINEER DISTRICT, TULSA  
CORPS OF ENGINEERS

LEGEND

- ▲ - 4 OF E MON.
- - IRON PIN
- - BRK. STONE

— □ — SHOWN ON SEGMT 42

*[Signature]*  
REGISTERED LAND SURVEYOR L.S. #122

BY REL DATE 10-14-77  
Ok on Proj. Man 11/2/77

*[Signature]*

EUFULA LAKE

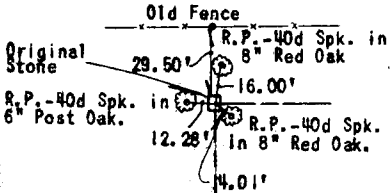
SECTION AND QUARTER SECTION  
CORNER REFERENCES FOR

SECTION 32, T 7 N, R 15 E, PITTSBURG COUNTY

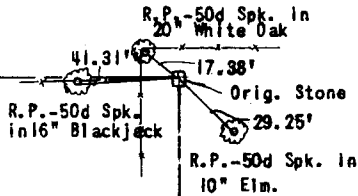
N.W. SECTION CORNER

NORTH ½ CORNER

N.E. SECTION CORNER

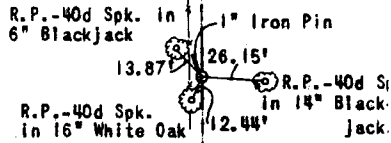
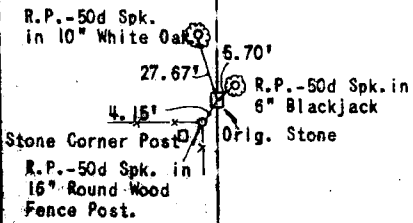


In Open Pasture  
No References  
1" Iron Pin



WEST ½ CORNER

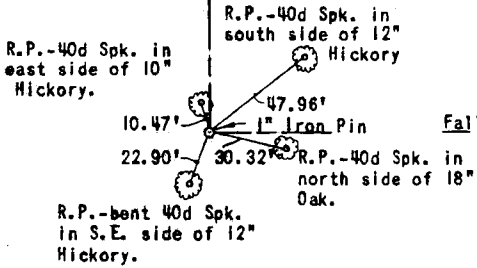
EAST ½ CORNER



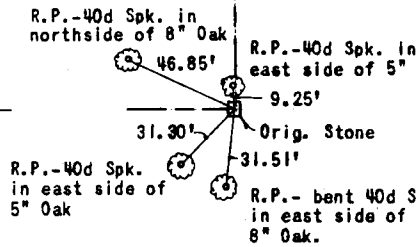
S.W. SECTION CORNER

SOUTH ½ CORNER

S.E. SECTION CORNER



Falls in River



Scale: 1"=50'  
Date: August 2, 1977  
Field Book No. E-1317  
Sullivan & Gilbert, Inc.