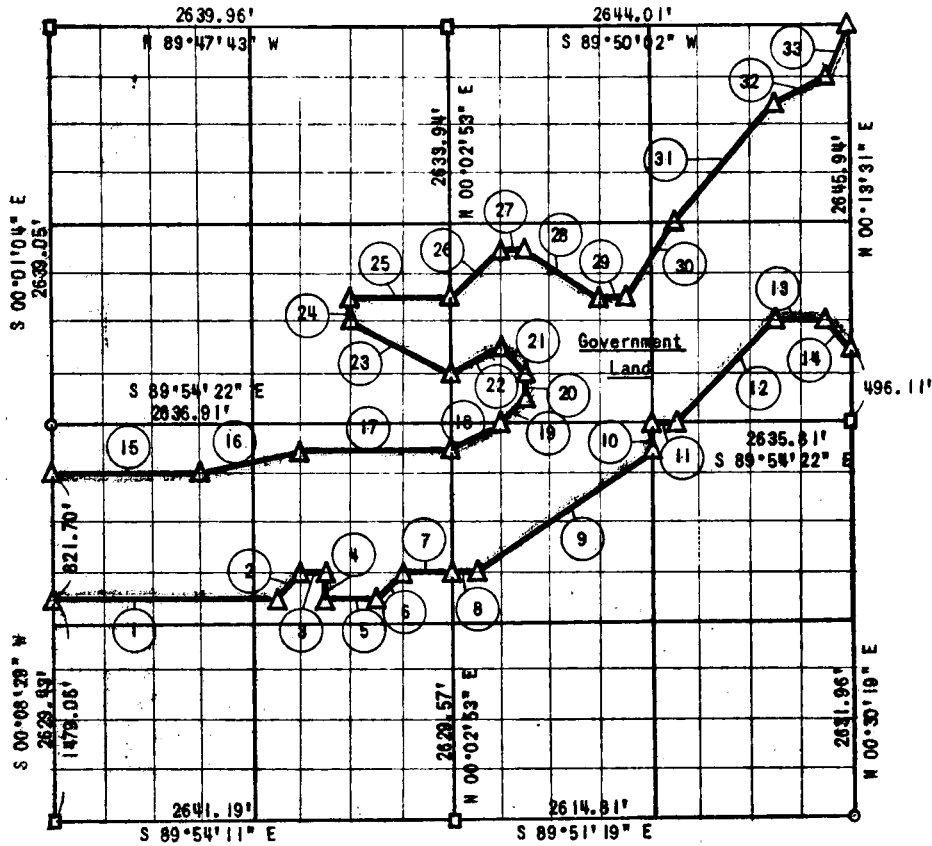


EUFAULA LAKE

SECTION 33, T 7 N, R 15 E

Performed Under Contract No. DACW 56-77-C-0097

PITTSBURG COUNTY



| Course No. | Distance | Bearing | Course No. | Distance | Bearing |
|------------|----------|---------------|------------|----------|---------------|
| 1 | 1484.32' | S 89°54'17" E | 18 | 368.07' | N 63°34'26" E |
| 2 | 232.80' | N 45°11'24" E | 19 | 232.97' | N 45°05'01" E |
| 3 | 164.62' | N 89°58'27" E | 20 | 164.78' | N 00°04'53" E |
| 4 | 164.35' | S 00°04'36" W | 21 | 232.99' | N 44°56'58" W |
| 5 | 329.85' | S 89°54'17" E | 22 | 368.49' | S 63°30'36" W |
| 6 | 232.76' | N 45°10'41" E | 23 | 737.42' | N 63°21'38" W |
| 7 | 329.81' | S 89°54'18" E | 24 | 163.40' | N 00°01'54" E |
| 8 | 164.25' | S 89°53'14" E | 25 | 658.94' | S 89°52'18" E |
| 9 | 1415.32' | N 54°38'06" E | 26 | 486.38' | N 45°04'28" E |
| 10 | 164.42' | N 00°16'36" E | 27 | 164.96' | N 89°58'48" E |
| 11 | 164.74' | S 89°54'22" E | 28 | 594.07' | S 58°17'58" E |
| 12 | 934.00' | N 45°03'27" E | 29 | 164.90' | S 80°59'15" E |
| 13 | 329.73' | S 89°58'17" E | 30 | 505.56' | N 33°46'28" E |
| 14 | 239.11' | S 44°47'07" E | 31 | 1059.45' | N 38°49'22" E |
| 15 | 989.04' | S 89°54'21" E | 32 | 870.23' | N 68°21'38" E |
| 16 | 679.50' | N 76°06'52" E | 33 | 870.62' | N 28°41'34" E |
| 17 | 988.94' | S 89°54'22" E | | | |

Field Book No. E-1318 Date: Aug. 2, 1971

CERTIFICATE OF SURVEY
 I, Surveyor, certify that the above plat is a true and correct representation of the survey made in Section 33, T 7 N, R 15 E, Pittsburg County, Oklahoma.
 REGISTERED LAND SURVEYOR L.S. #122

SULLIVAN & GILBERT, INC.
 Consulting Engineers
 Under the supervision of
 U.S. ARMY ENGINEER DISTRICT, TULSA
 CORPS OF ENGINEERS

LEGEND
 DATE 10-14
 Δ - G OF E MON.
 ⊙ - IRON PIN
 □ - ORIG. STONE

EUFULA LAKE

SECTION AND QUARTER SECTION

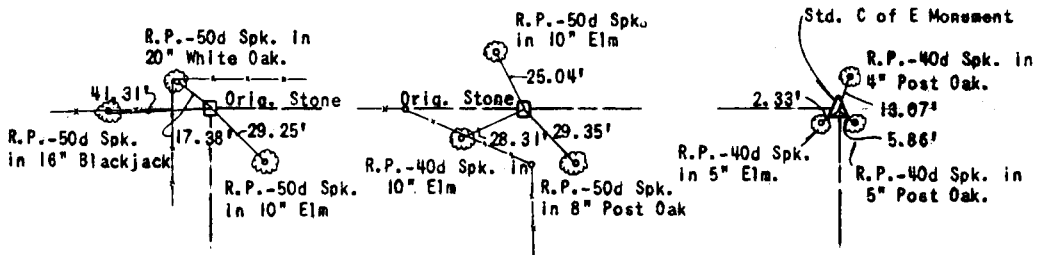
CORNER REFERENCES FOR

SECTION 33, T 7 N, R 15 E, PITTSBURG COUNTY

N.W. SECTION CORNER

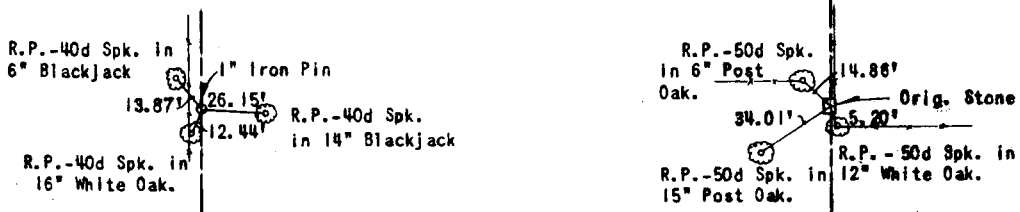
NORTH ½ CORNER

N.E. SECTION CORNER



WEST ½ CORNER

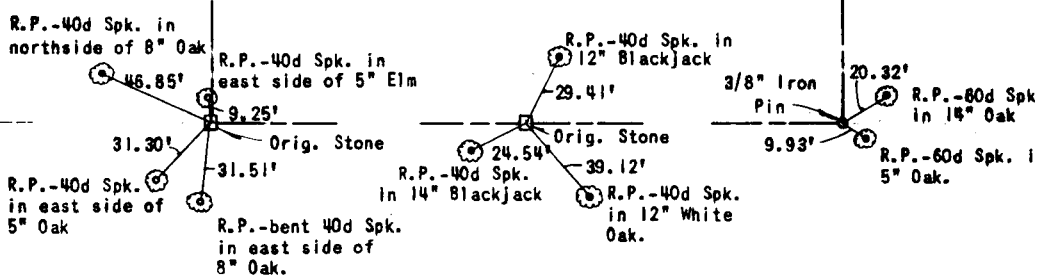
EAST ½ CORNER



S.W. SECTION CORNER

SOUTH ½ CORNER

S.E. SECTION CORNER



Scale: 1"=50'
 Date: August 2, 1877
 Field Book No. E-1318
 Sullivan & Gilbert, Inc.