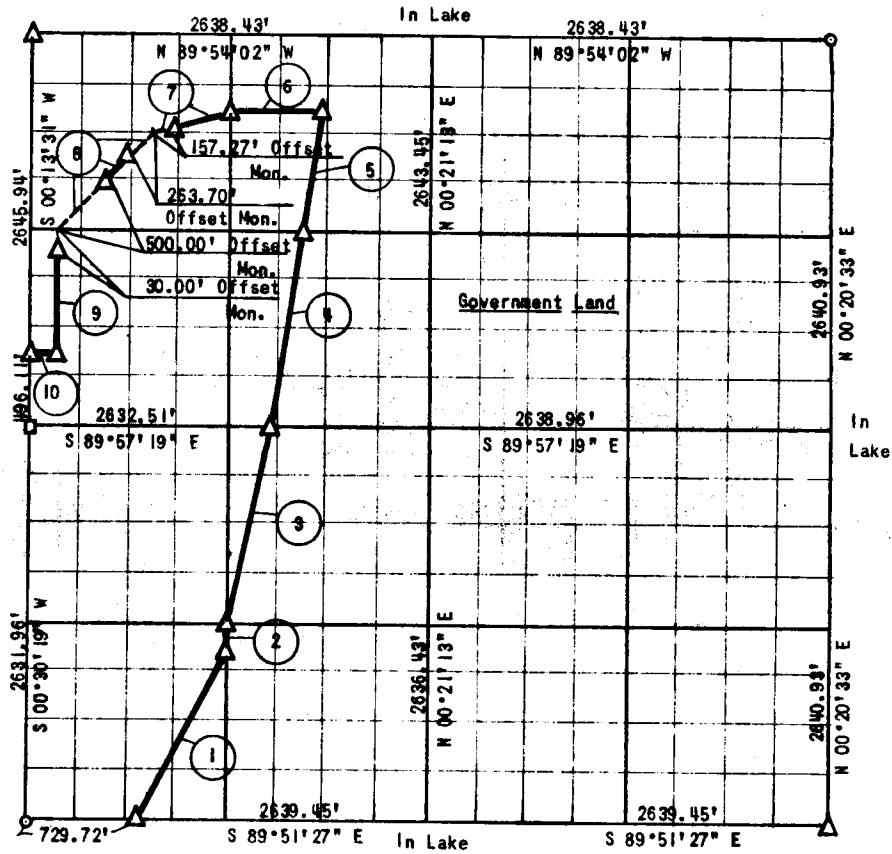


PARTIAL SURVEY
 EUFAULA LAKE
 SECTION 34, T 7 N, R 15 E

PITTSBURG COUNTY

Performed Under Contract No. DACW 56-77-C-0097



Course No.	Distance	Bearing	Course No.	Distance	Bearing
1	1292.56'	N 27°35'17" E			
2	169.81'	N 00°25'46" E			
3	1347.56'	N 12°15'21" E			
4	1343.81'	N 10°21'33" E			
5	839.76'	N 10°21'33" E			
6	657.98'	N 89°54'39" W			
7	521.88'	S 71°37'15" W			
8	935.07'	S 45°03'50" W			
9	826.81'	S 00°13'59" W			
10	164.60'	N 89°56'42" W			

CERTIFICATE OF SURVEY

Field Book No. E-1319

Date: Aug. 2, 1977

I hereby certify that the above plat is a true and correct representation of the survey made in Section 34, T 7 N, R 15 E, Pittsburg County, Oklahoma.

SULLIVAN & GILBERT, INC.
 Consulting Engineers

LEGEND

Under the supervision of
 U.S. ARMY ENGINEER DISTRICT, TULSA
 CORPS OF ENGINEERS

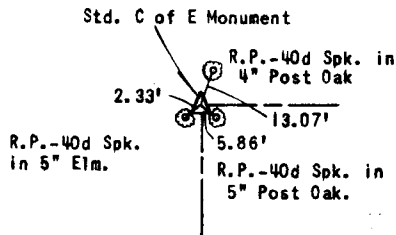
- △ - C OF E MON.
- - IRON PIN
- - ORIG. STONE

[Signature]
 REGISTERED LAND SURVEYOR L.S. #122

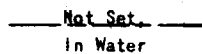
499

EUFAULA LAKE
SECTION AND QUARTER SECTION
CORNER REFERENCES FOR
SECTION 34, T 7 N, R 15 E, PITTSBURG COUNTY

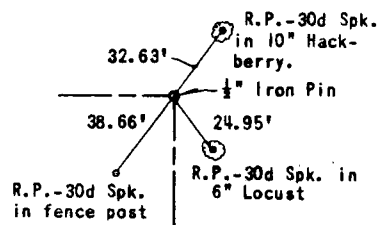
N.W. SECTION CORNER



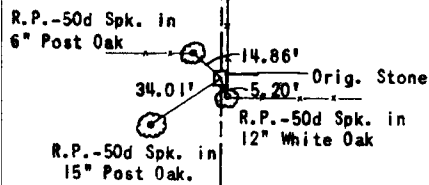
NORTH 1/4 CORNER



N.E. SECTION CORNER



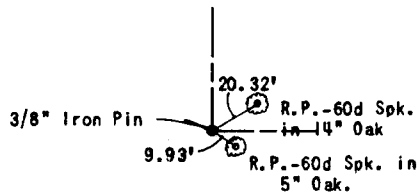
WEST 1/4 CORNER



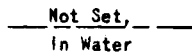
EAST 1/4 CORNER



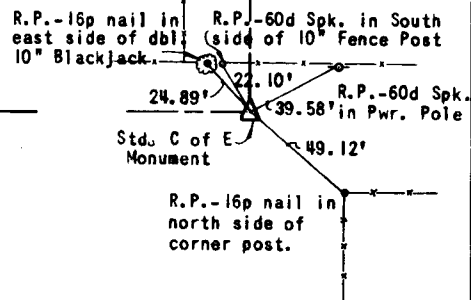
S.W. SECTION CORNER



SOUTH 1/4 CORNER



S.E. SECTION CORNER



Scale: 1"=50'
 Date: August 2, 1977
 Field Book No. E-1319
 Sullivan & Gilbert, Inc.