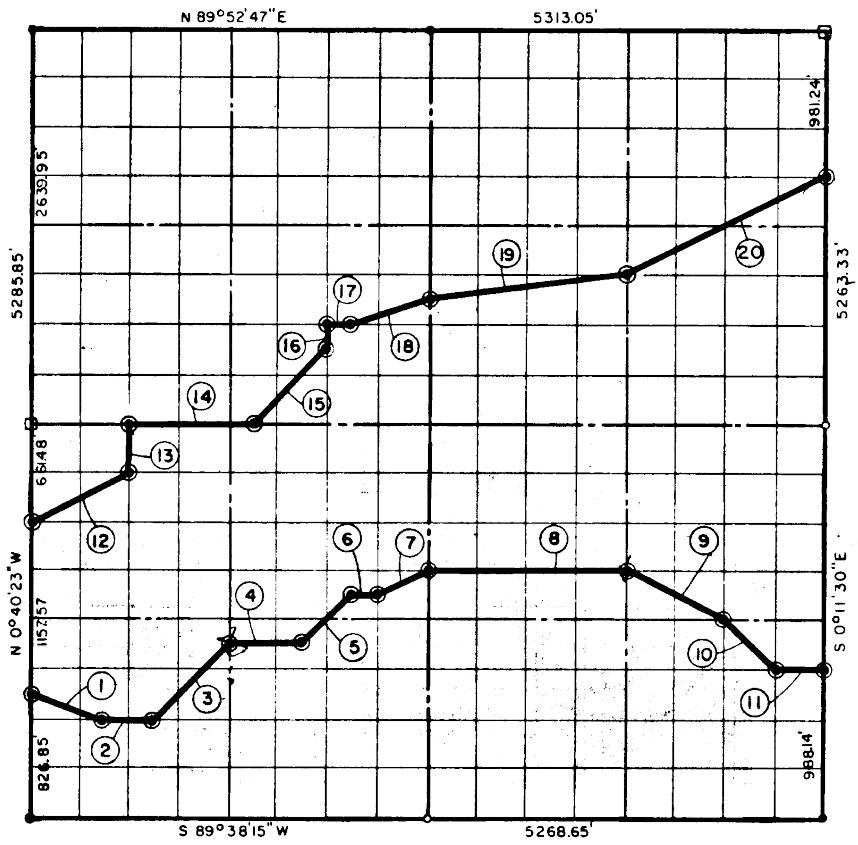


SECTION 3, T 7 N, R 15 E, PITTSBURG COU

... S CAP IN CONCRETE

... ORIGINAL STONE

• IRON PIN



COURSE NO.	DISTANCE	BEARING	COURSE NO.	DISTANCE	BEARING
①	522.31'	S 71° 52' 24" E	⑪	329.82'	N 89° 40' 53" E
②	329.64'	N 89° 40' 00" E	⑫	737.01'	N 63° 04' 35" E
③	698.74'	N 44° 29' 25" E	⑬	330.57'	N 0° 36' 47" W
④	494.85'	N 89° 41' 19" E	⑭	826.70'	N 89° 45' 18" E
⑤	466.15'	N 44° 35' 23" E	⑮	699.44'	N 44° 41' 28" E
⑥	165.04'	N 89° 42' 12" E	⑯	165.00'	N 0° 29' 32" W
⑦	368.70'	N 63° 06' 45" E	⑰	165.52'	N 89° 45' 18" E
⑧	1320.63'	N 89° 42' 38" E	⑱	522.74'	N 71° 21' 19" E
⑨	737.80'	S 63° 45' 35" E	⑲	1334.51'	N 82° 39' 10" E
⑩	465.90'	S 45° 19' 00" E	⑳	1479.30'	N 63° 23' 18" E

BOOK No. 954

12160.37 457

I, John Carney, a Registered Professional Engineer, do hereby certify that the above plat is a true and accurate survey of Sec. 3, T. 7 N., R. 15 E. as made under my supervision.

12,160.37

John Carney
 JOHN CARNEY
 Reg. Prof. Engr. No. 137