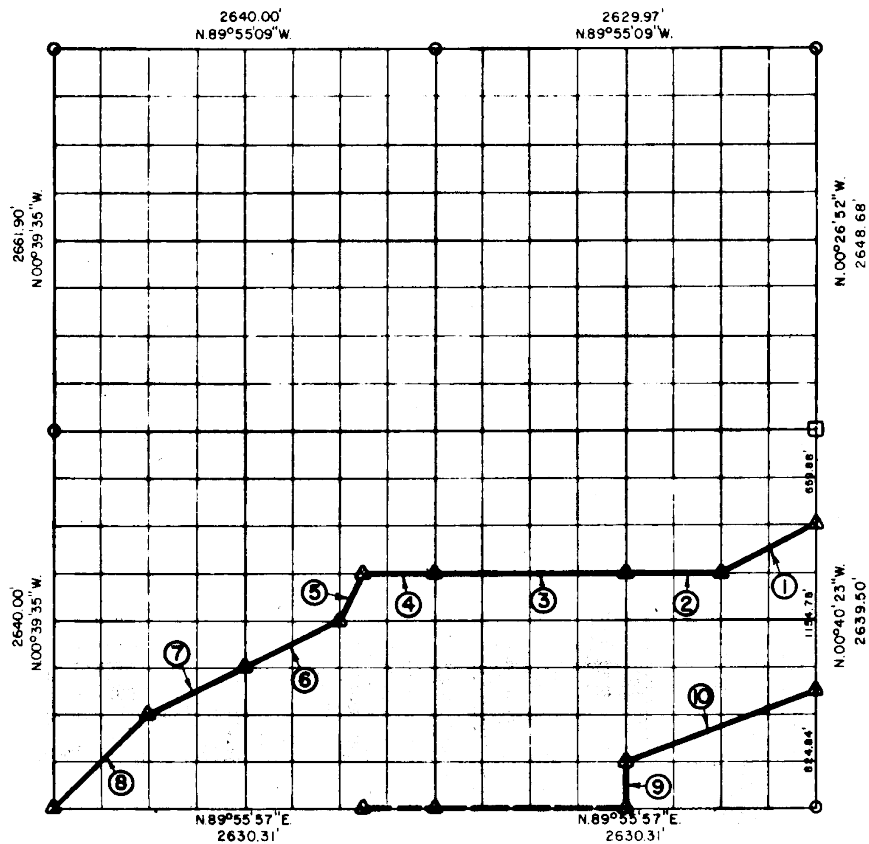


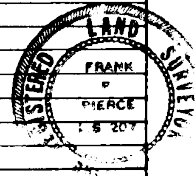
PARTIAL BOUNDARY SURVEYS
 EUFAULA LAKE
 OKLAHOMA

Performed Under Contract Number DACW 56-75-C-0126

SEC. 4, T. 7 N., R. 15 E., COUNTY PITTSBURG



Course No.	Distance	Bearing	Course No.	Distance	Bearing
1	731.81'	S.63°08'21\"W.			
2	656.74'	S.89°56'09\"W.			
3	1313.47'	S.89°56'09\"W.			
4	493.75'	S.89°56'09\"W.			
5	367.41'	S.26°01'47\"W.			
6	733.33'	S.63°11'37\"W.			
7	733.33'	S.63°11'37\"W.			
8	927.04'	S.44°32'38\"W.			
9	329.95'	N.00°36'52\"W.			
10	1399.97'	N.69°13'56\"E.			



Field Book No. E-1206 Date 7-11-75

CERTIFICATE OF SURVEY

I Hereby Certify That The Above Plat is a True and Correct Representation of The Survey Made in Section

4, T. 7 N., R. 15 E., PITTSBURG COUNTY, OKLAHOMA

Frank P. Pierce
 Registered Professional Engineer
 Registered Land Surveyor

MAPCO ENGINEERING CORPORATION

Under The Supervision Of

U.S. ARMY ENGINEER DISTRICT, TULSA
 CORPS OF ENGINEERS

SHEET 1 of 2

LEGEND

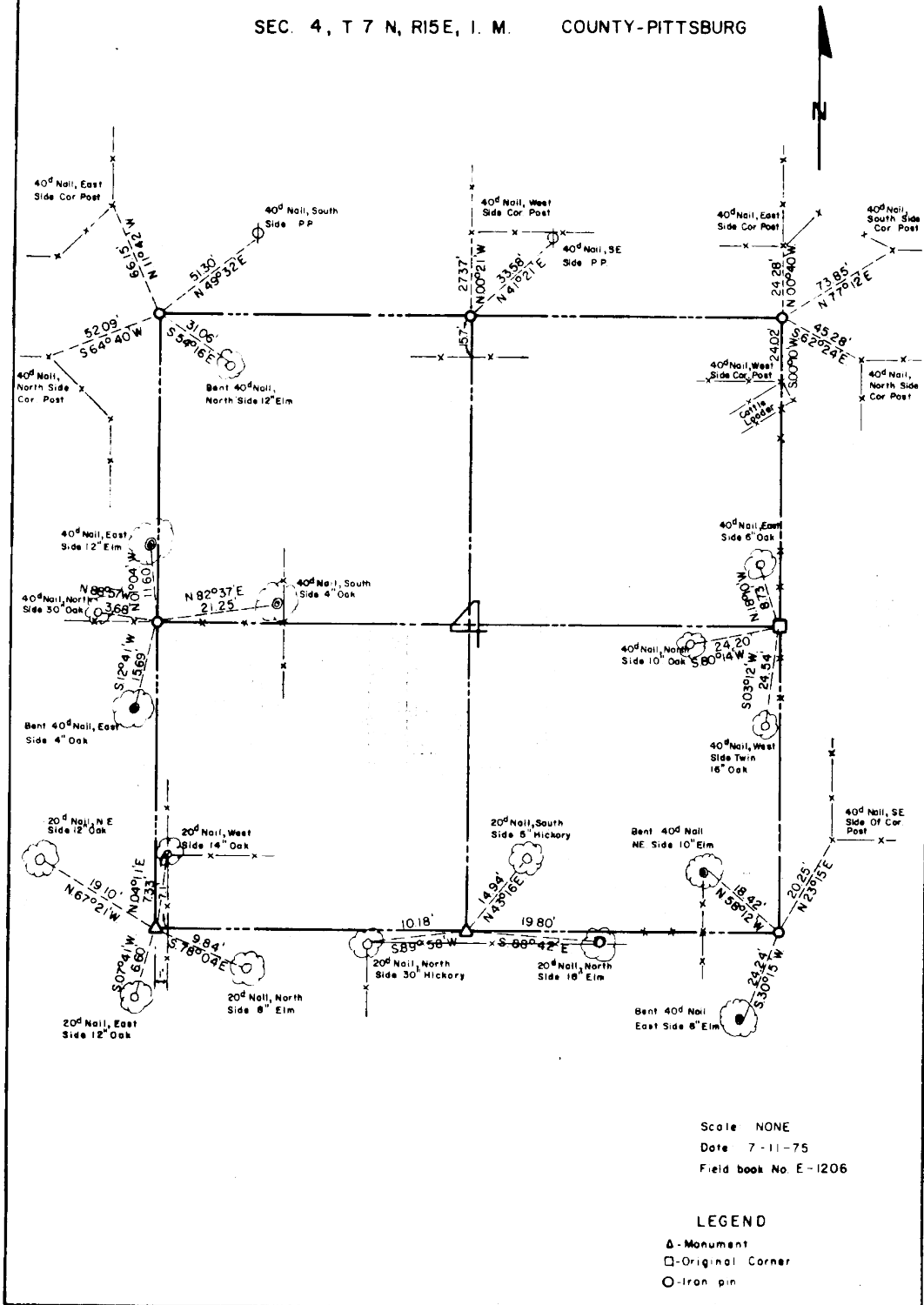
- ▲ MONUMENT
- ORIGINAL CORNER
- IRON PIN

456

EUFAULA LAKE OKLAHOMA

SECTION AND QUARTER SECTION CORNER REFERENCES FOR

SEC. 4, T 7 N, R15E, I. M. COUNTY-PITTSBURG



Scale NONE
Date 7-11-75
Field book No E-1206

LEGEND

- △ - Monument
- - Original Corner
- - Iron pin