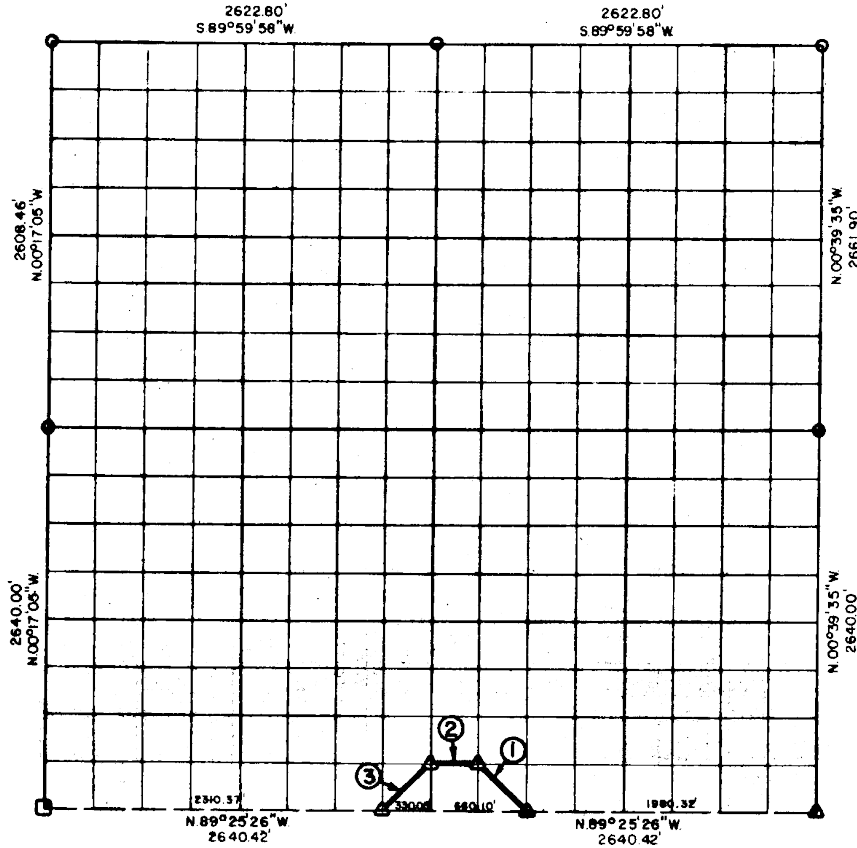


PARTIAL BOUNDARY SURVEYS
 EUFAULA LAKE
 OKLAHOMA

Performed Under Contract Number DACW 56-75-C-0126

SEC. 5, T. 7 N., R. 15 E., COUNTY PITTSBURG



Course No.	Distance	Bearing	Course No.	Distance	Bearing
1	471.07'	N. 44° 57' 53\"			
2	329.92'	N. 89° 25' 24\"			
3	462.43'	S. 45° 03' 22\"			



CERTIFICATE OF SURVEY

I hereby certify that the above plot is a true and correct representation of the survey made in Section 5, T. 7 N., R. 15 E., PITTSBURG COUNTY, OKLAHOMA.

Frank P. Pierce
 Registered Professional Engineer
 Registered Land Surveyor

Field Book No. E-1204 Date 7-11-75

MAPCO ENGINEERING CORPORATION

Under the Supervision of

U.S. ARMY ENGINEER DISTRICT, TULSA
 CORPS OF ENGINEERS

SHEET 1 of 2

LEGEND

- ▲ MONUMENT
- ORIGINAL CORNER
- IRON PIN

455

EUFAULA LAKE OKLAHOMA

SECTION AND QUARTER SECTION CORNER
REFERENCES FOR

SEC. 5, T 7 N, R 15 E, I. M. COUNTY-PITTSBURG

