

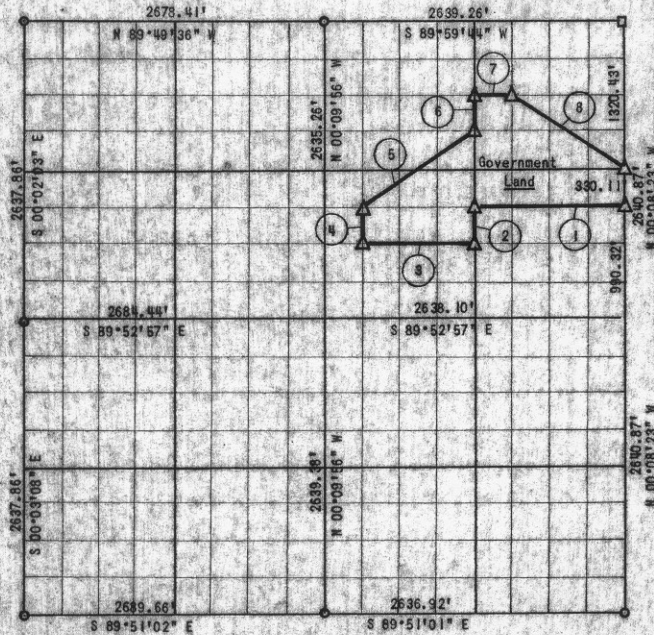
PARTIAL BOUNDARY SURVEY

EUFULA LAKE

SECTION 7, T 7 N, R 15 E

Performed Under Contract No. DACW 56-77-C-0097

PITTSBURG COUNTY



Course No.	Distance	Bearing	Course No.	Distance	Bearing
1	1319.27'	N 89°55'42" W			
2	329.76'	S 00°09'09" E			
3	989.40'	N 89°54'47" W			
4	329.27'	N 00°09'44" W			
5	1187.15'	N 56°19'03" E			
6	329.76'	N 00°09'09" W			
7	929.87'	S 89°58'26" E			
8	1191.22'	S 56°18'57" E			

CERTIFICATE OF SURVEY

Field Book No. E-1321

Date: Aug. 2, 1977

I hereby certify that the above plat is a true and correct representation of the survey made in Section 7, T 7 N, R 15 E, Pittsburg County, Okla.

SULLIVAN & GILBERT, INC.
 Consulting Engineers
 Under the supervision of
 U.S. ARMY ENGINEER DISTRICT, TULSA
 CORPS OF ENGINEERS

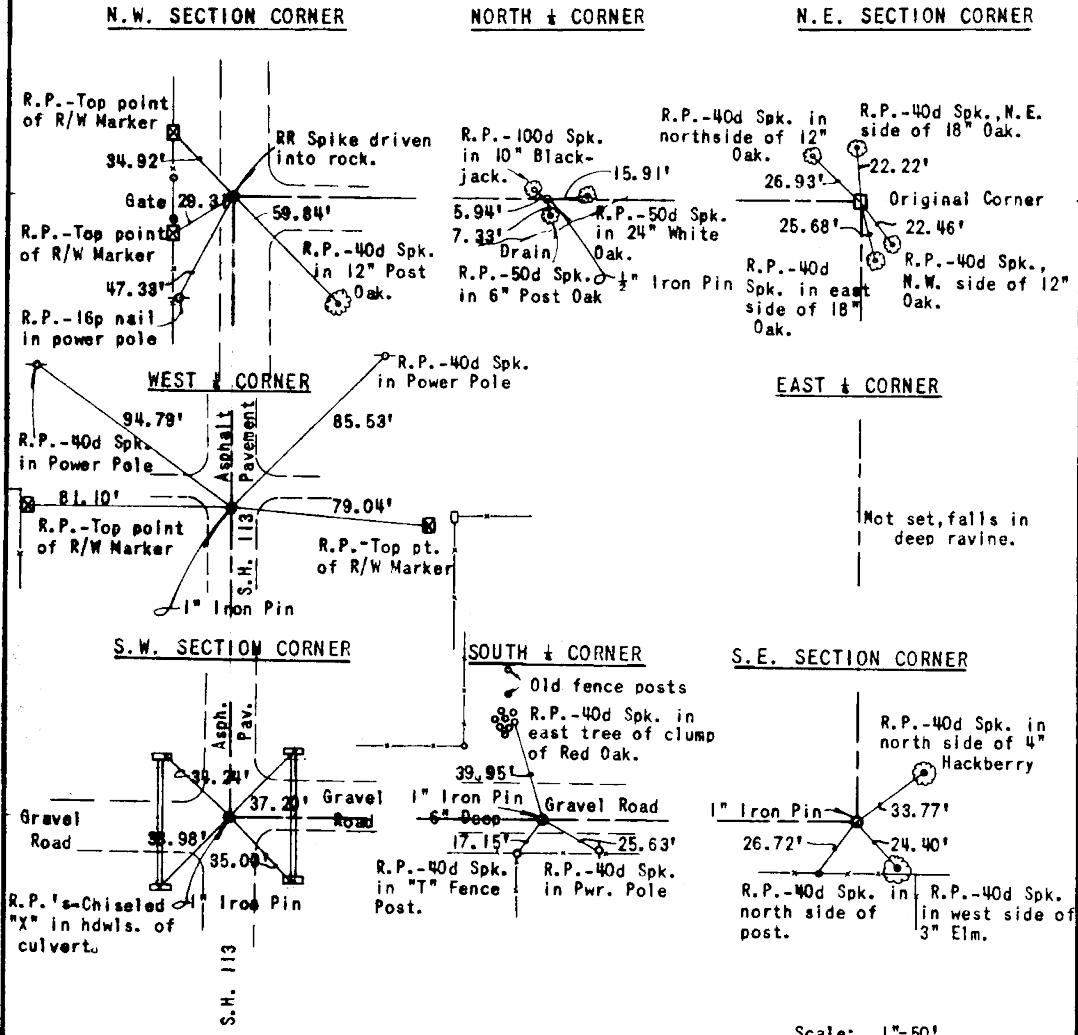
LEGEND

- △ - C OF E MON.
- - IRON PIN
- - ORIG. STONE

Sullivan & Gilbert
 REGISTERED LAND SURVEYOR L.S. #122

465

EUFAULA LAKE
SECTION AND QUARTER SECTION
CORNER REFERENCES FOR
SECTION 7, T 7 N, R 15 E, PITTSBURG COUNTY



Scale: 1"=50'
Date: August 2, 1977
Field Book No. E-1321
Sullivan & Gilbert, Inc.