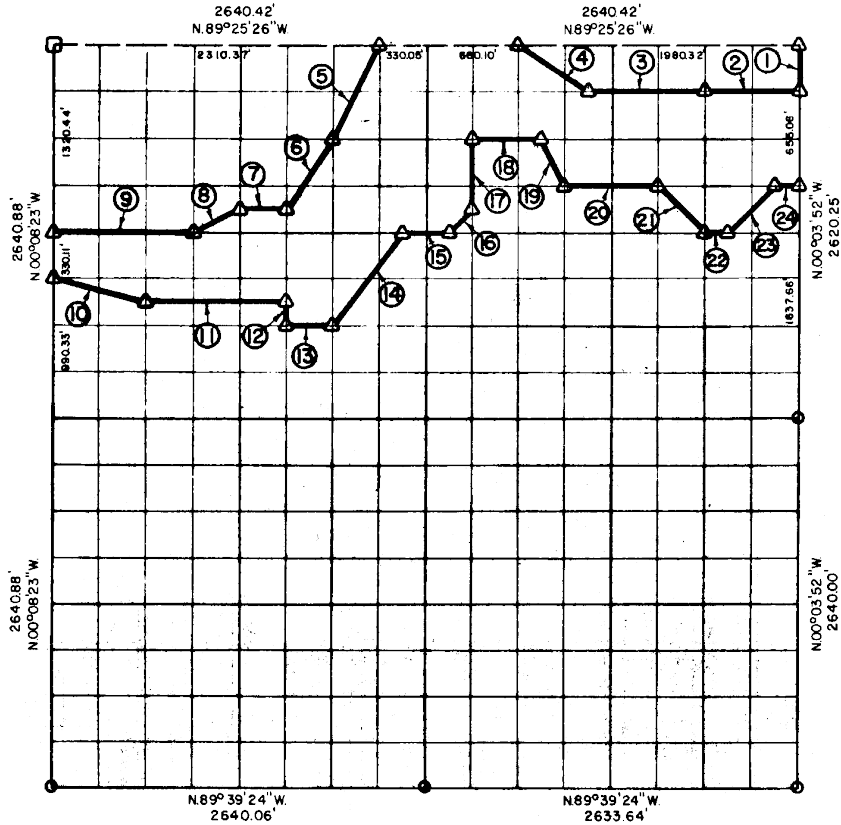


**PARTIAL BOUNDARY SURVEYS
EUFAULA LAKE
OKLAHOMA**

Performed Under Contract Number DACW 56-75-C-0126

SEC. 8, T. 7 N., R. 15 E., COUNTY PITTSBURG



Course No.	Distance	Bearing	Course No.	Distance	Bearing
1	327.53'	S.00°03'52\"E.	14	819.50'	N.37°01'26\"E.
2	660.00'	N.89°27'06\"W.	15	329.94'	S.89°32'08\"E.
3	825.00'	N.89°27'06\"W.	16	231.61'	N.45°16'18\"E.
4	597.26'	N.56°05'13\"W.	17	492.99'	N.00°07'40\"W.
5	732.71'	S.26°37'56\"W.	18	494.92'	S.89°28'46\"E.
6	590.91'	S.33°48'50\"W.	19	369.07'	S.26°39'31\"E.
7	330.04'	N.89°31'18\"W.	20	659.78'	S.89°30'28\"E.
8	367.31'	S.63°49'10\"W.	21	467.43'	S.44°58'15\"E.
9	990.11'	N.89°32'08\"W.	22	164.92'	S.89°32'08\"E.
10	681.95'	S.75°34'19\"E.	23	462.72'	N.45°23'37\"E.
11	990.09'	S.89°34'39\"E.	24	164.95'	S.89°30'28\"E.
12	164.65'	S.00°08'17\"E.			
13	330.03'	S.89°35'29\"E.			

CERTIFICATE OF SURVEY

I Herby Certify That The Above Plot is a True and Correct Representation of The Survey Made in Section

B T. 7 N. R. 15 E., PITTSBURG COUNTY, OKLAHOMA

Frank P. Pierce
Registered Professional Engineer
Registered Land Surveyor

Field Book No. E-1202 Date 7-11-75

MAPCO ENGINEERING CORPORATION

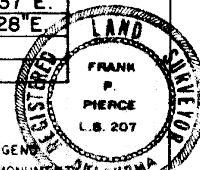
Under The Supervision Of

**U.S. ARMY ENGINEER DISTRICT, TULSA
CORPS OF ENGINEERS**

SHEET 1 of 2

LEGEND

- ▲ MONUMENT
- ORIGINAL CORNER
- IRON PIN

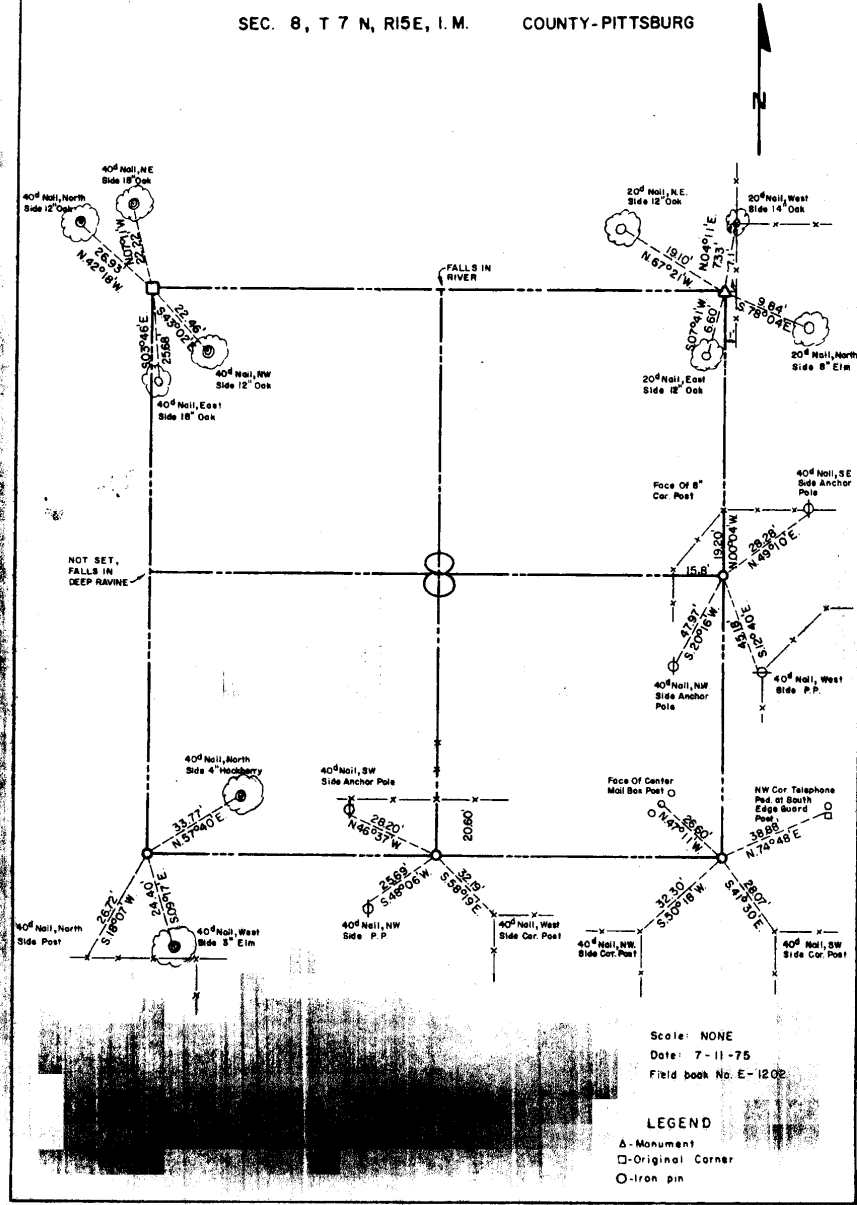


466

EUFAULA LAKE
OKLAHOMA

SECTION AND QUARTER SECTION CORNER
REFERENCES FOR

SEC. 8, T 7 N, R 15 E, I. M. COUNTY-PITTSBURG



Scale: NONE
Date: 7-11-75
Field book No. E-1202

LEGEND

- △ - Monument
- - Original Corner
- - Iron pin