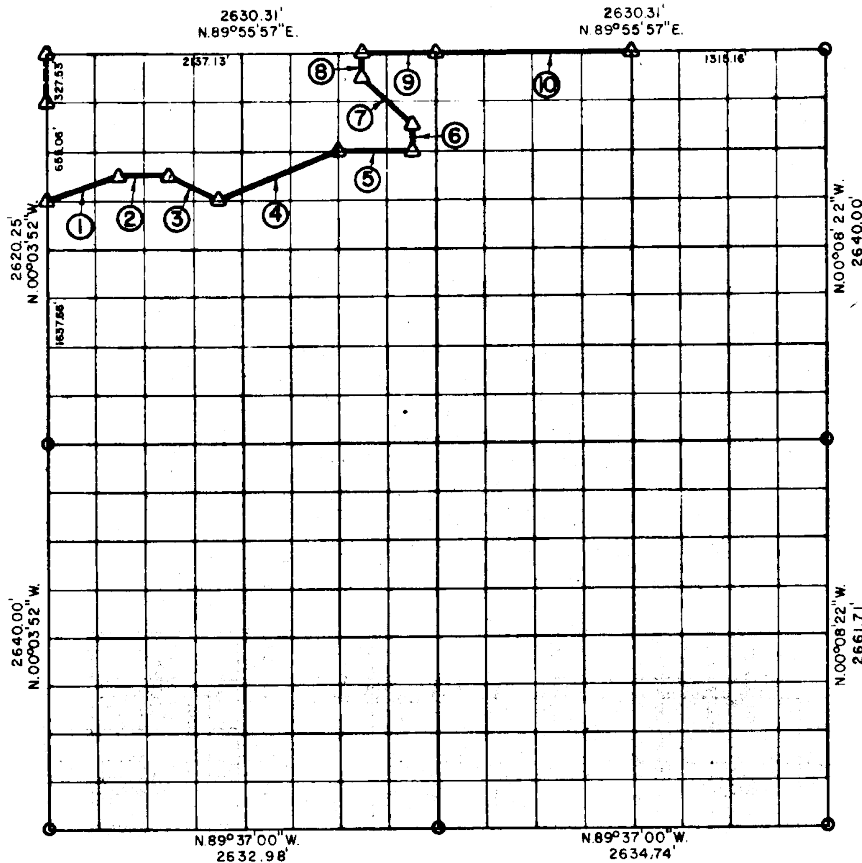


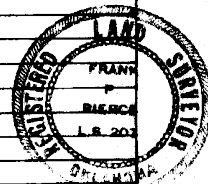
**PARTIAL BOUNDARY SURVEYS
EUFAULA LAKE
OKLAHOMA**

Performed Under Contract Number DACW 56-75-C-0126

SEC. 9, T. 7 N., R. 15 E., COUNTY PITTSBURG



Course No.	Distance	Bearing	Course No.	Distance	Bearing
1	519.56'	N71°37'37\"E.			
2	328.84'	N89°59'59\"E.			
3	367.68'	S63°30'14\"E.			
4	884.79'	N68°13'18\"E.			
5	493.24'	N.89°59'10\"E.			
6	1643.4'	N.00°05'27\"W.			
7	465.05'	N.45°04'55\"W.			
8	164.27'	N.00°05'14\"W.			
9	493.18'	N.89°55'57\"E.			
10	1315.15'	N.89°55'57\"E.			



Field Book No. E-1207 Date 7-11-75

CERTIFICATE OF SURVEY

I Herby Certify That The Above Plat is a True and Correct Representation of The Survey Made in Section

9, T. 7 N., R. 15 E., PITTSBURG COUNTY, OKLAHOMA

Frank P. Pierce
Registered Professional Engineer
Registered Land Surveyor

MAPCO ENGINEERING CORPORATION

Under The Supervision Of

**U.S. ARMY ENGINEER DISTRICT, TULSA
CORPS OF ENGINEERS**

SHEET 1 of 2

LEGEND

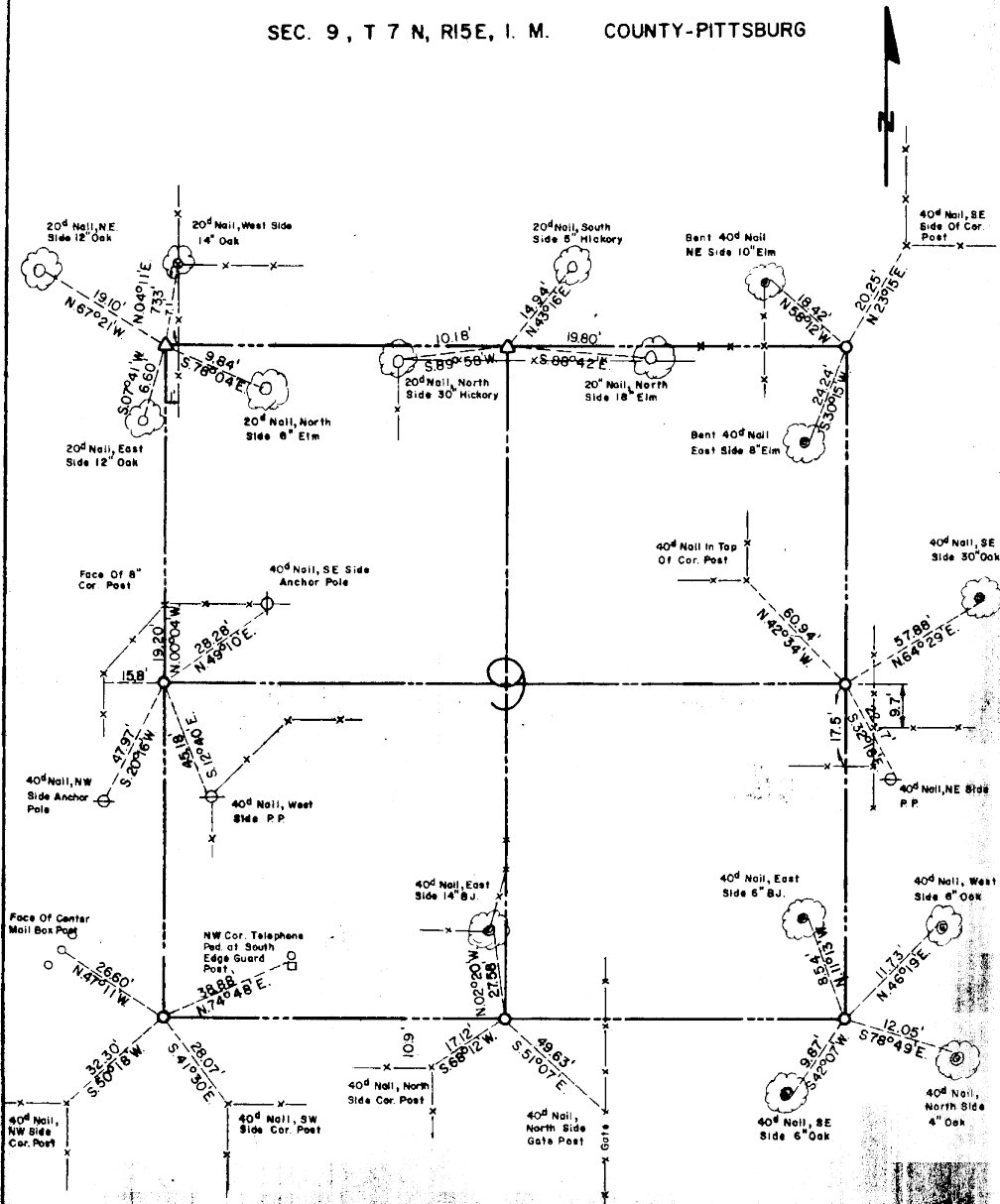
- ▲ MONUMENT
- ORIGINAL CORNER
- IRON PIN

467

EUFAULA LAKE OKLAHOMA

SECTION AND QUARTER SECTION CORNER
REFERENCES FOR

SEC. 9, T 7 N, R 15 E, I. M. COUNTY-PITTSBURG



Scale: NONE
Date: 7-11-75
Field book No. E-1207

LEGEND
 Δ - Monument
 □ - Original Corner
 ○ - Iron pin