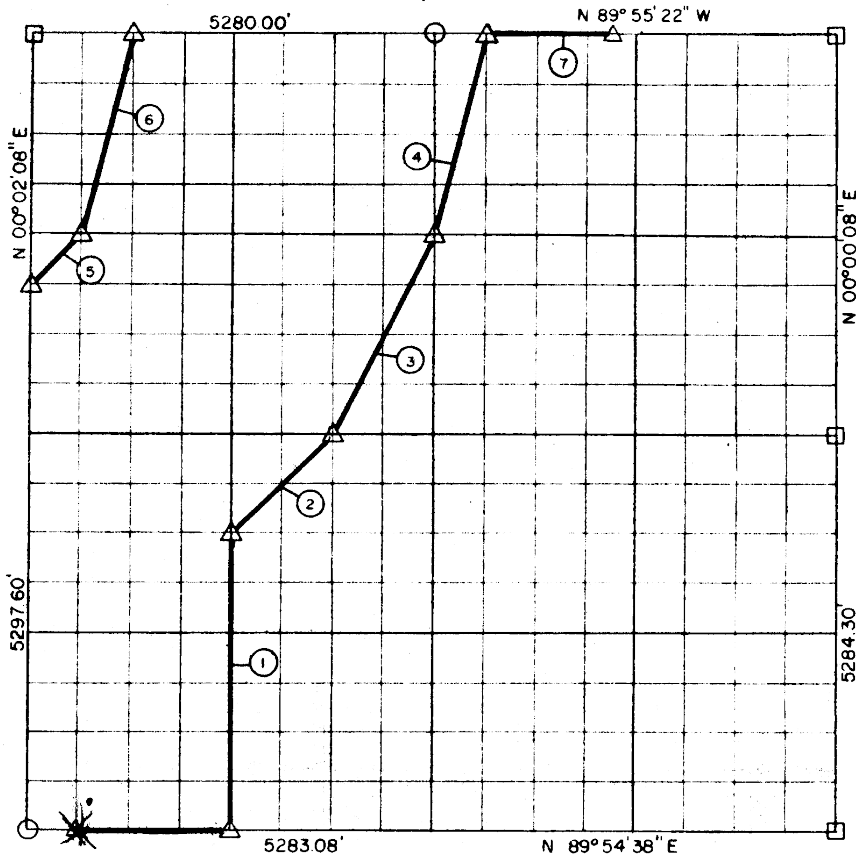


.C. 10, T 7 N, R 16 E, PITTSBURG COUN.



Course No.	Distance	Bearing	Course No.	Distance	Bearing
1	1985.36'	N 00° 01' 38" E			
2	935.04'	N 44° 56' 30" E			
3	1478.60'	N 26° 32' 18" E			
4	1362.96'	N 14° 01' 51" E			
5	467.82'	N 44° 54' 18" E			
6	1364.91'	N 14° 01' 28" E			
7	825.00'	S 89° 55' 22" E			
	8419.69				

Book No. E-976

Date: February, 1965

473

I, Jack R. Kalman, a Registered Professional Engineer, do hereby certify that the above plat is a true and accurate survey of Sec. 10, T 7 N, R 16 E as made under my supervision.

8419.69

*Jack R. Kalman*  
 JACK R. KALMAN  
 Reg. Prof. Engr. No 2786