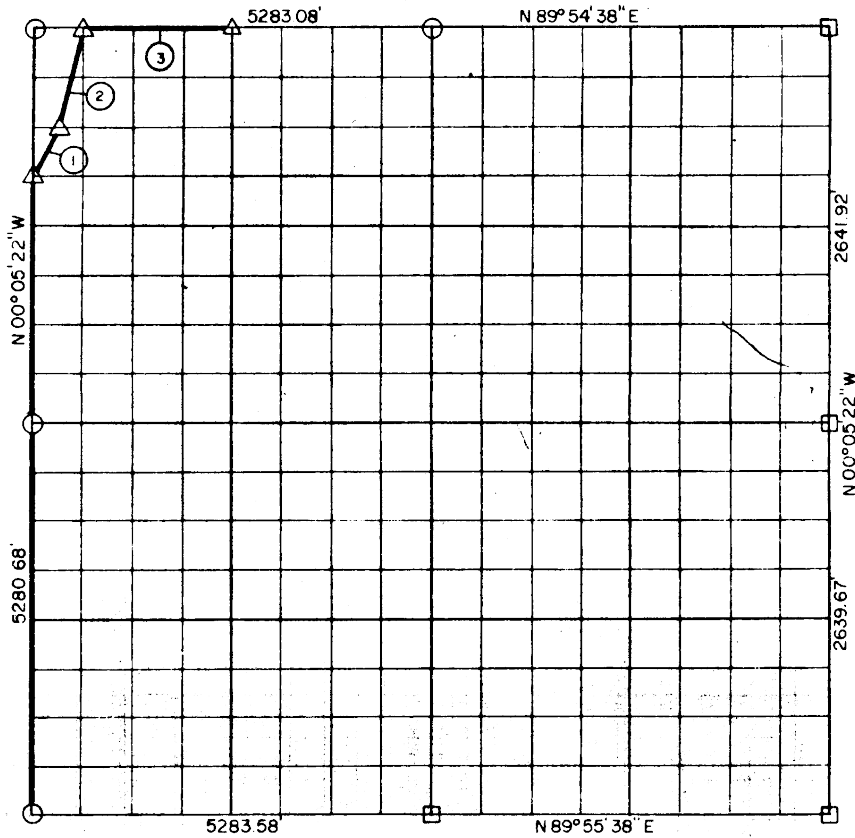


EC. 15, T 7 N, R 16 E, PITTSBURG COUN



Course No.	Distance	Bearing	Course No.	Distance	Bearing
1	369.01'	N 26° 29' 15" E			
2	680.43'	N 13° 57' 11" E			
3	990.58'	N 89° 54' 38" E			
	2070.02				

Book No. E-977

Date: February, 1965

479

I, Jack R. Kalman, a Registered Professional Engineer, do hereby certify that the above plat is a true and accurate survey of Sec. 15, T 7 N, R 16 E as made under my supervision.

2040.02

Jack R. Kalman
JACK R. KALMAN
 Reg. Prof. Engr. No. 2786