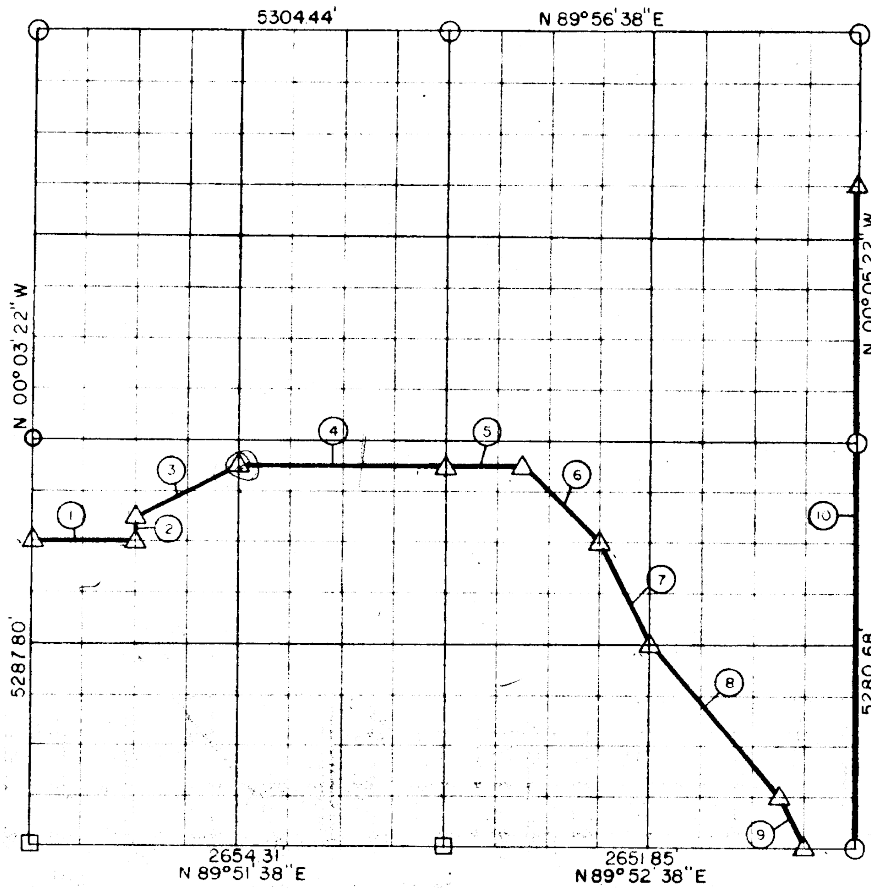


SEC. 16, T 7 N, R 16 E, PITTSBURG COU. ✓



Course No	Distance	Bearing	Course No.	Distance	Bearing
1	663.38'	N 89°53'30" E			
2	165.21'	N 00°03'56" W			
3	741.25'	N 63°25'38" E			
4	1326.66'	N 89°53'59" E			
5	497.26'	N 89°54'30" E			
6	701.80'	S 45°12'31" E			
7	738.79'	S 26°45'07" E			
8	1291.09'	S 40°01'22" E			
9	369.28'	S 26°45'30" E			
10	4290.55'	N 00°05'22" W			
10,785.27					

Book No. E-978

Date. February, 1965

478

I, Jack R. Kalman, a Registered Professional Engineer, do hereby certify that the above plot is a true and accurate survey of Sec. 16, T 7 N, R 16 E, as made under my supervision

10,785.27

Jack R. Kalman
 JACK R. KALMAN
 Reg. Prof. Engr. No. 2786