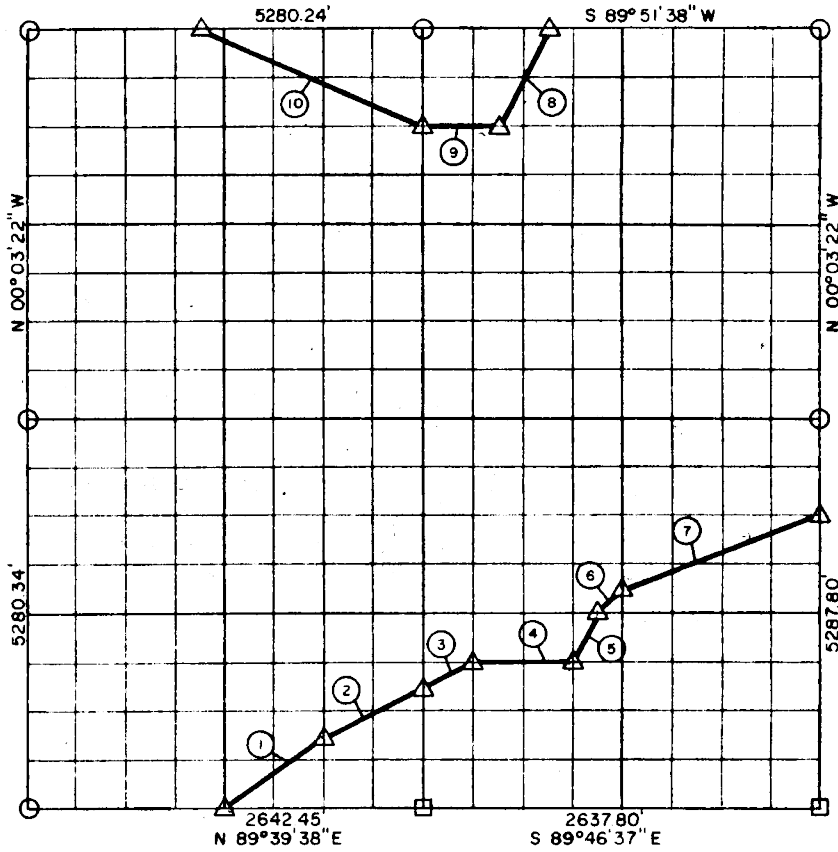


SEC. 17, T 7 N, R 16 E PITTSBURG COUNTY



Course No.	Distance	Bearing	Course No.	Distance	Bearing
1	826.94'	N 52° 56' 44\" E			
2	739.37'	N 63° 13' 14\" E			
3	368.02'	N 63° 33' 58\" E			
4	659.56'	S 89° 50' 41\" E			
5	368.12'	N 26° 32' 22\" E			
6	232.85'	N 45° 01' 03\" E			
7	1407.86'	N 69° 30' 16\" E			
8	737.34'	S 26° 30' 38\" W			
9	494.97'	S 89° 53' 06\" W			
10	1624.08'	N 66° 12' 15\" W			
	7459.11				

Book No. E-979

Date: February, 1965

477

I, Jack R. Kalman, a Registered Professional Engineer, do hereby certify that the above plat is a true and accurate survey of Sec. 17, T 7 N, R 16 E as made under my supervision

7459.11

Jack R. Kalman
 JACK R. KALMAN
 Reg. Prof. Engr. No. 2786