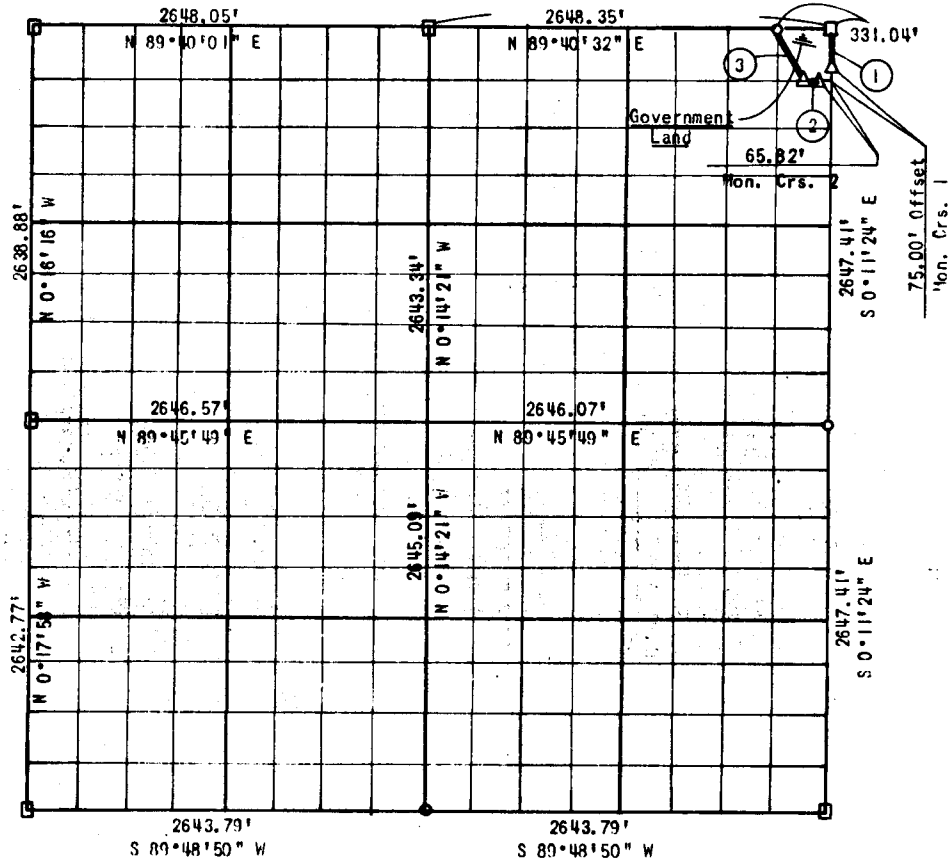


Performed Under Contract No.
DACW 56-77-C-0255

PARTIAL BOUNDARY SURVEY
EUFALA LAKE
SECTION 21, T 7 N, R 16 E
PITTSBURG COUNTY



Course No.	Distance	Bearing	Course No.	Distance	Bearing
1	330.93'	S 0°11'24\" E			
2	165.50'	S 89°41'12\" W			
3	369.65'	N 26°47'41\" W			

CERTIFICATE OF SURVEY Field Book No. E-1390 Date: March 15, 1978

I hereby certify that the above plat is a true and correct representation of the survey made in Section 21, T 7 N, R 16 E, Pittsburg County, Oklahoma.

SULLIVAN AND GILBERT, INC.
Consulting Engineers
Under the supervision of
U.S. ARMY ENGINEER DISTRICT, TULSA
CORPS OF ENGINEERS

LEGEND
 Δ C OF E MON.
 ○ IRON PIN
 □ ORIG. STONE

William F. Gilbert
REGISTERED LAND SURVEYOR L.S. #122

486

ED. LAKE

SECTION AND QUARTER SECTION

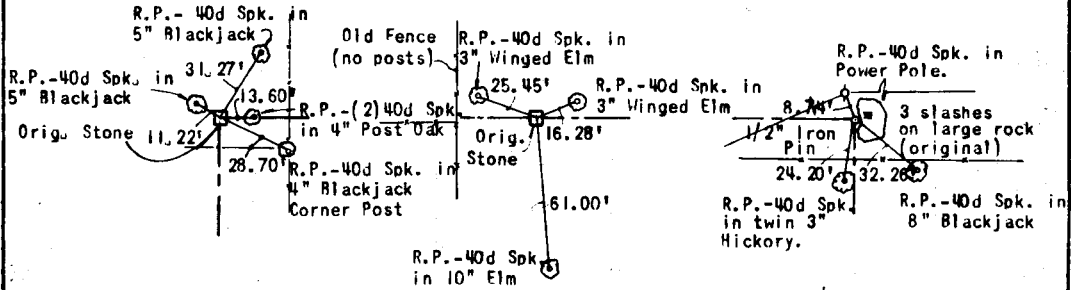
CORNER REFERENCES FOR

SECTION 21, T 7 N, R 16 E, PITTSBURG COUNTY

N.W. SECTION CORNER

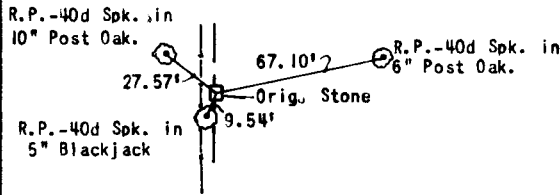
NORTH 1/4 CORNER

N.E. SECTION CORNER



WEST 1/4 CORNER

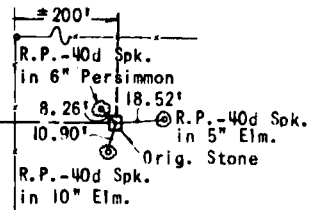
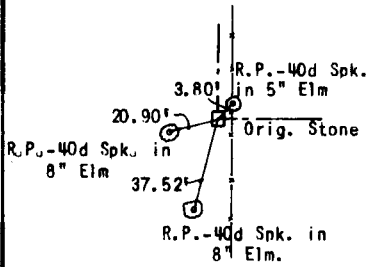
EAST 1/4 CORNER



S.W. SECTION CORNER

SOUTH 1/4 CORNER

S.E. SECTION CORNER



Scale: 1"=50'
 Field Book No. E-1390
 Sullivan and Gilbert, Inc.
 Date: March 15, 1978