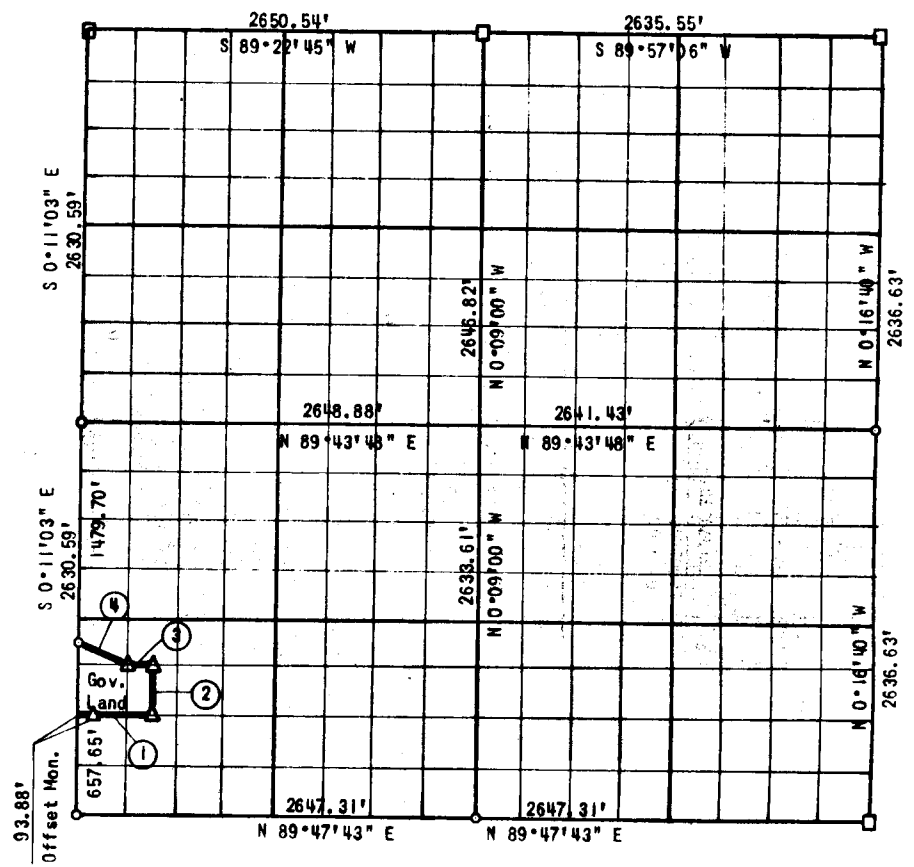


Performe n. tract No. **SECTION 27 7** PARTIAL SURVEY
 DACW 56-7 **7** **AKE** N, R 16 E P1 COUNTY



Course No.	Distance	Bearing	Course No.	Distance	Bearing
1	496.44'	N 89°46'44\" E			
2	328.89'	N 0°10'40\" W			
3	165.49'	S 89°46'15\" W			
4	369.46'	N 83°48'19\" W			

CERTIFICATE OF SURVEY Field Book No. E-1391 Date: March 15, 1978

I hereby certify that the above plat is a true and correct representation of the survey made in Section 27, T 7 N, R 16 E, Pittsburg County, Oklahoma.

SULLIVAN AND GILBERT, INC.
 Consulting Engineers

Under the supervision of
U.S. ARMY ENGINEER DISTRICT, TULSA
 CORPS OF ENGINEERS

LEGEND
 Δ C OF E 'MON.
 ○ IRON PIN
 □ ORIG. STONE

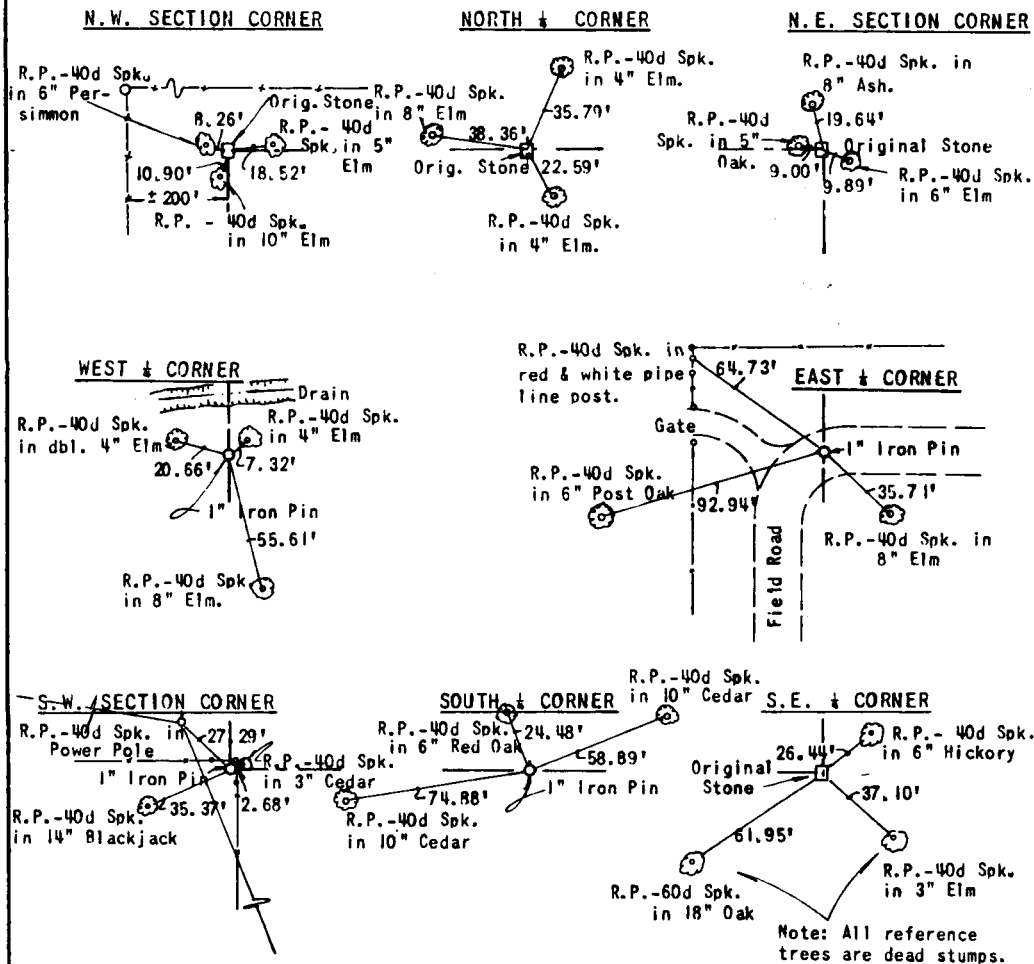
Sullivan and Gilbert
 REGISTERED LAND SURVEYOR L.S. #122

EUFAULA LAKE

SECTION AND QUARTER SECTION

CORNER REFERENCES FOR

SECTION 27, T 7 N, R 16 E PITTSBURG COUNTY



Scale: 1"=50'
 Field Book No. E-1391
 Sullivan and Gilbert, Inc.
 Date: March 15, 1978