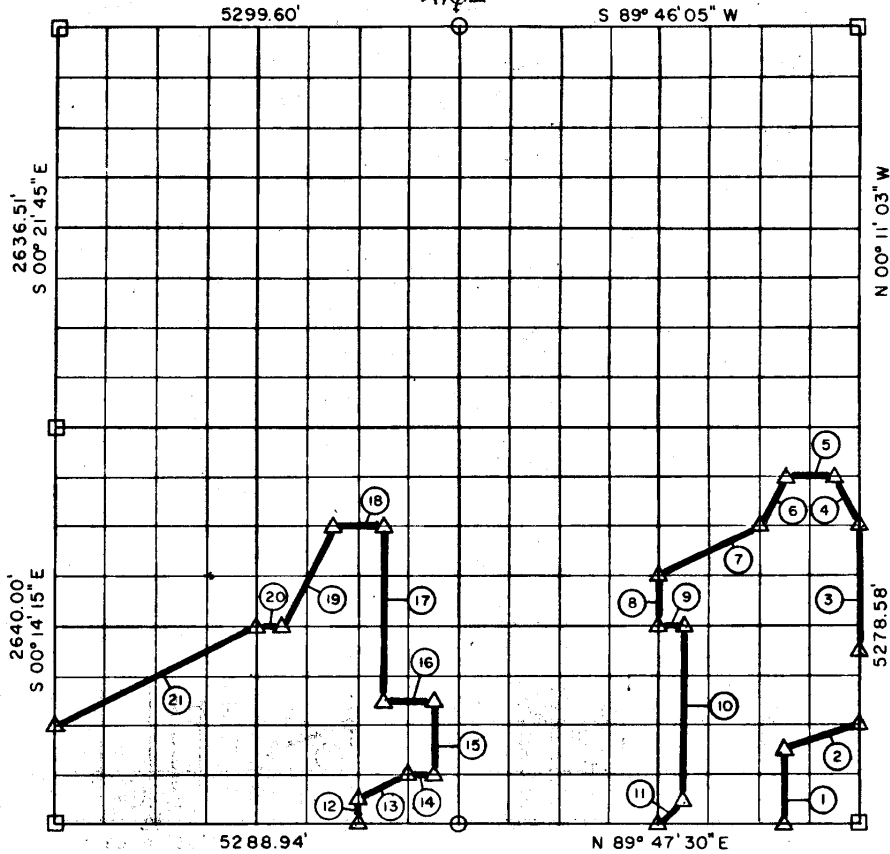


C. 28, T 7 N, R 16 E PITTSBURG COUN



Course No.	Distance	Bearing	Course No.	Distance	Bearing
1	494.88'	N 00° 11' 21" W	17	1154.87'	N 00° 12' 57" W
2	522.67'	N 71° 23' 43" E	18	330.67'	S 89° 47' 47" W
3	824.78'	N 00° 11' 03" W	19	738.07'	S 26° 23' 41" W
4	368.99'	N 26° 48' 25" W	20	165.32'	S 89° 47' 42" W
5	330.69'	S 89° 47' 50" W	21	1477.73'	S 63° 16' 03" W
6	369.06'	S 26° 25' 35" W			
7	739.10'	S 63° 17' 01" W		10925, 65	
8	329.93'	S 00° 11' 51" E			
9	165.32'	N 89° 47' 42" E			
10	1154.76'	S 00° 11' 45" E			
11	233.54'	S 44° 51' 19" W			
12	164.98'	N 00° 13' 03" W			
13	369.44'	N 63° 16' 55" E			
14	165.29'	N 89° 47' 33" E			
15	494.95'	N 00° 12' 45" W			
16	330.61'	S 89° 47' 37" W			

Book No. E-1050 Date: May, 1965

494

I, Jack R. Kalman, a Registered Professional Engineer, do hereby certify that the above plat is a true and accurate survey of Sec. 28, T 7 N, R 16 E as made under my supervision.

Jack R. Kalman
 JACK R. KALMAN
 Reg. Prof. Engr. No. 2786