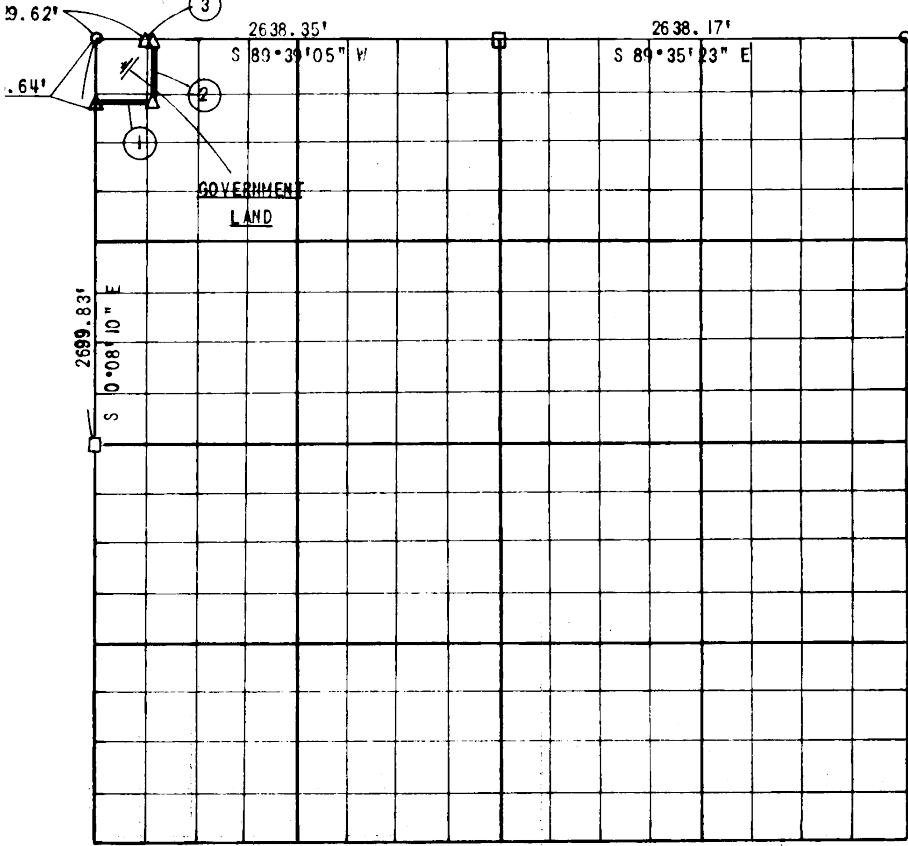


PARTIAL BOUNDARY SURVEY
 EUFAULA LAKE
 SECTION 2, T 7 N, R 16 E
 PITTSBURG COUNTY



Course No.	Distance	Bearing	Course No.	Distance	Bearing
1	356.64'	N 89°39'05" E			
2	356.66'	N 0°08'10" W			
3	27.02'	S 89°39'05" W			

CERTIFICATE OF SURVEY
 I hereby certify that the above plat is a true and correct representation of the survey made in Section 2, T 7 N, R 16 E, Pittsburg County, Oklahoma

Field Book No. E-1389 Date: March 15, 1978

SULLIVAN AND GILBERT, INC.
 Consulting Engineers

Under the supervision of
 U.S. ARMY ENGINEER DISTRICT, TULSA
 CORPS OF ENGINEERS

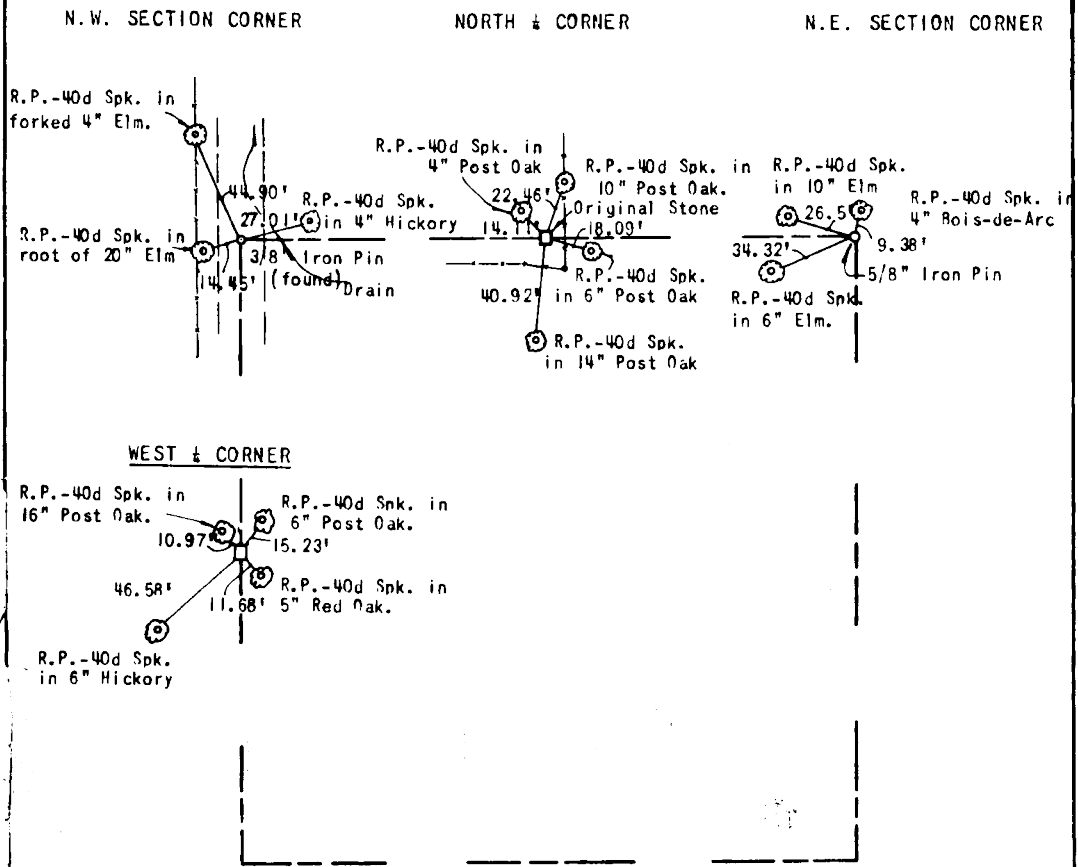
LEGEND
 Δ C O F E MON.
 ○ IRON PIN
 □ ORIG. STONE

[Signature]
 REGISTERED LAND SURVEYOR L.S. #122

464

EUFAULA LAKE
SECTION AND QUARTER SECTION
CORNER REFERENCES FOR

SECTION 2, T 7 N, R 16 E, MCINTOSH COUNTY



Scale: 1"=50'
Field Book No. E-1389
Sullivan and Gilbert, Inc.
Date: March 15, 1978