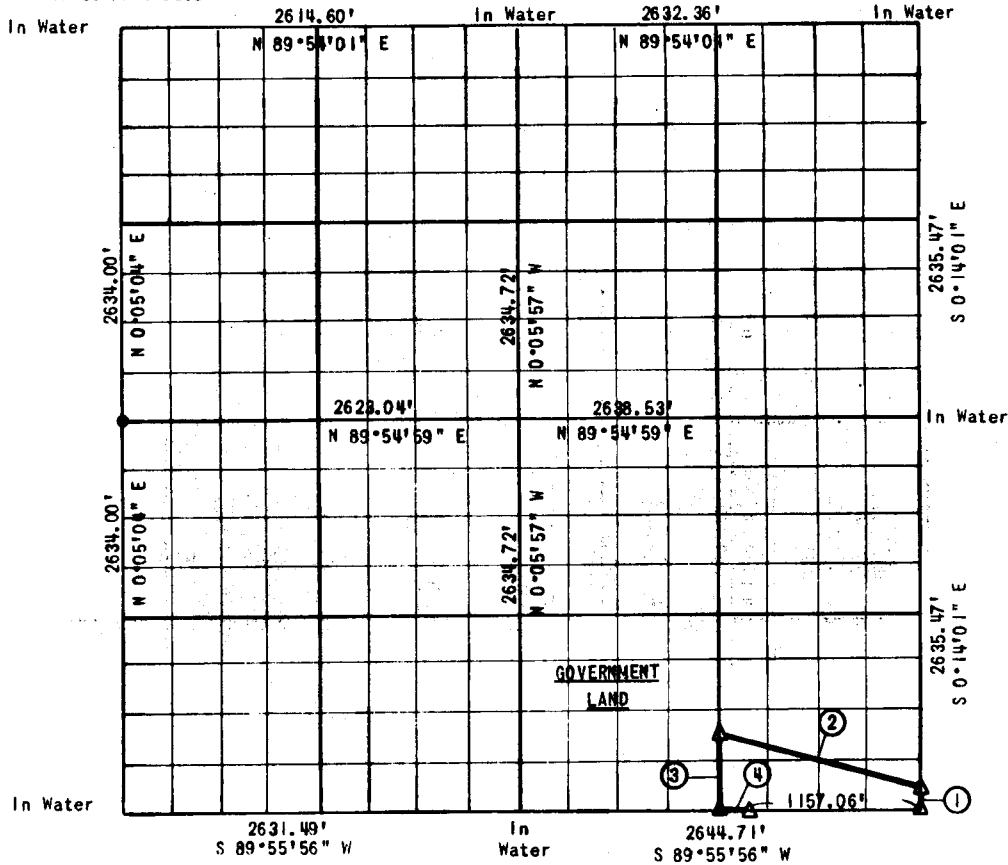


PARTIAL BOUNDARY SURVEY  
EUFAUL LAKE

Performed Under Contract No.  
DACW 56-77-C-0255

SECTION 31, T 7 N, R 16 E

PITTSBURG COUNTY



Course No.	Distance	Bearing	Course No.	Distance	Bearing
1	164.72'	N 0°14'01" W			
2	1363.13'	N 76°05'07" W			
3	494.08'	S 0°09'59" E			
4	165.29'	N 89°55'56" E			

CERTIFICATE OF SURVEY

Field Book No. E-1393

Date: March 15, 1978

I hereby certify that the above plat is a true and correct representation of the survey made in Section 31, T 7 N, R 16 E, Pittsburg County, Oklahoma.

SULLIVAN AND GILBERT, INC.  
Consulting Engineers

Under the supervision of  
U.S. ARMY ENGINEER DISTRICT, TULSA  
CORPS OF ENGINEERS

LEGEND

- △ C OF E MON.
- IRON PIN
- ORIG. STONE

*Sullivan and Gilbert*  
REGISTERED LAND SURVEYOR L.S. #122

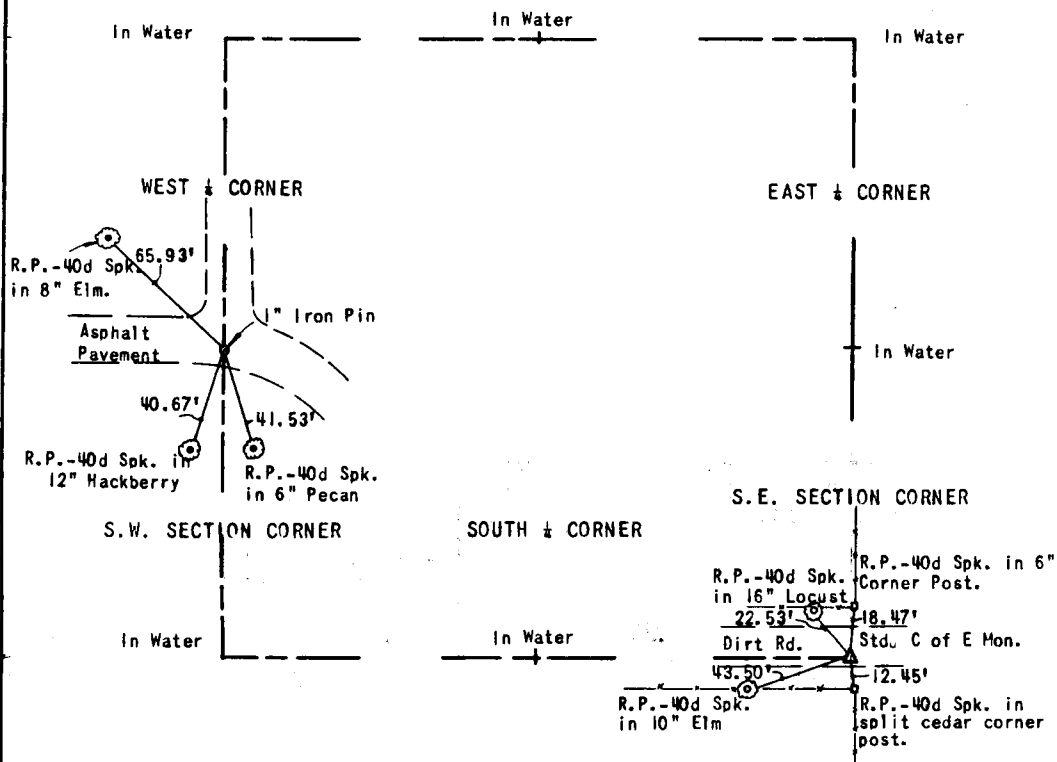
502

EUFULA LAKE  
SECTION AND QUARTER SECTION  
CORNER REFERENCES FOR  
SECTION 31, T 7 N, R 16 E, PITTSBURG COUNTY

N.W. SECTION CORNER

NORTH ½ CORNER

N.E. SECTION CORNER



Scale: 1"=50'  
Field Book No. E-1393  
Sullivan and Gilbert, Inc.  
Date: March 15, 1978.