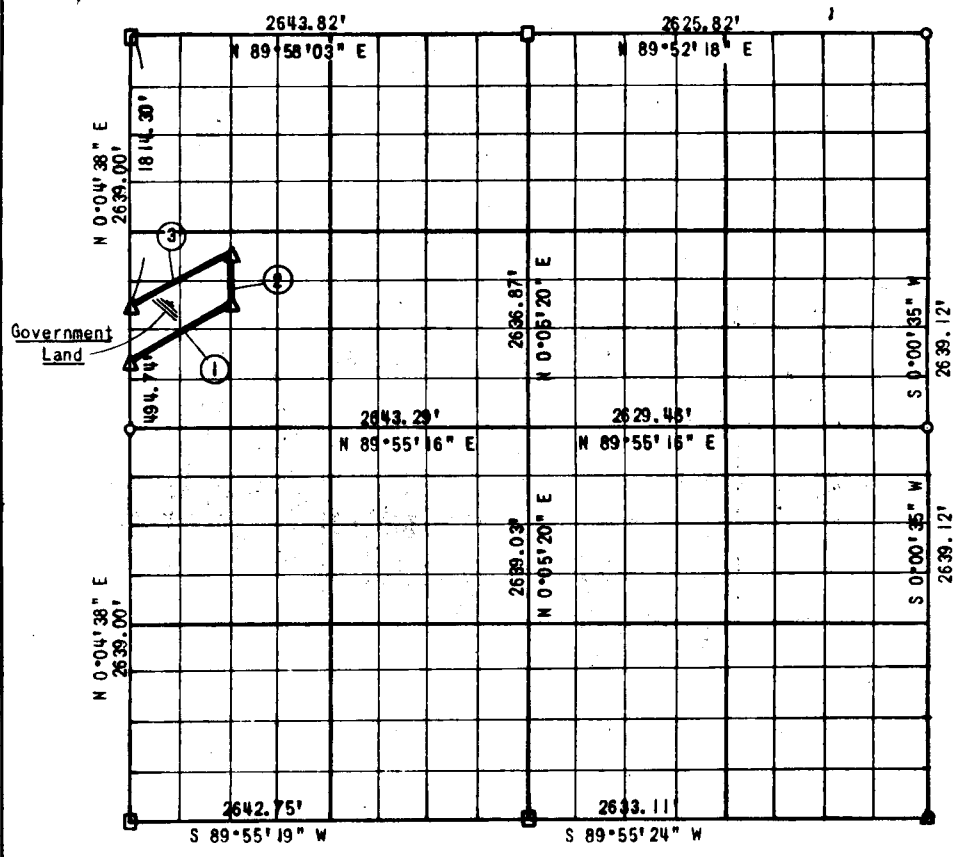


PARTIAL BOUNDARY SURVEY
 EUFAULA LAKE
 SECTION 36, T. 7 N., R. 16 E. PITTSBURG COUNTY
 Performed Under Contract No. DACW 56-77-C-0255



Course No.	Distance	Bearing	Course No.	Distance	Bearing
1	739.31'	N 63°28'15" E			
2	329.81'	N 0°04'48" E			
3	739.33'	S 63°26'34" W			

CERTIFICATE OF SURVEY

I hereby certify that the above plat
 is a true and correct representation of
 the survey made in Section 36, T. 7 N., R. 16 E.,
 Pittsburg County, Oklahoma.

Field Book No. E-1392

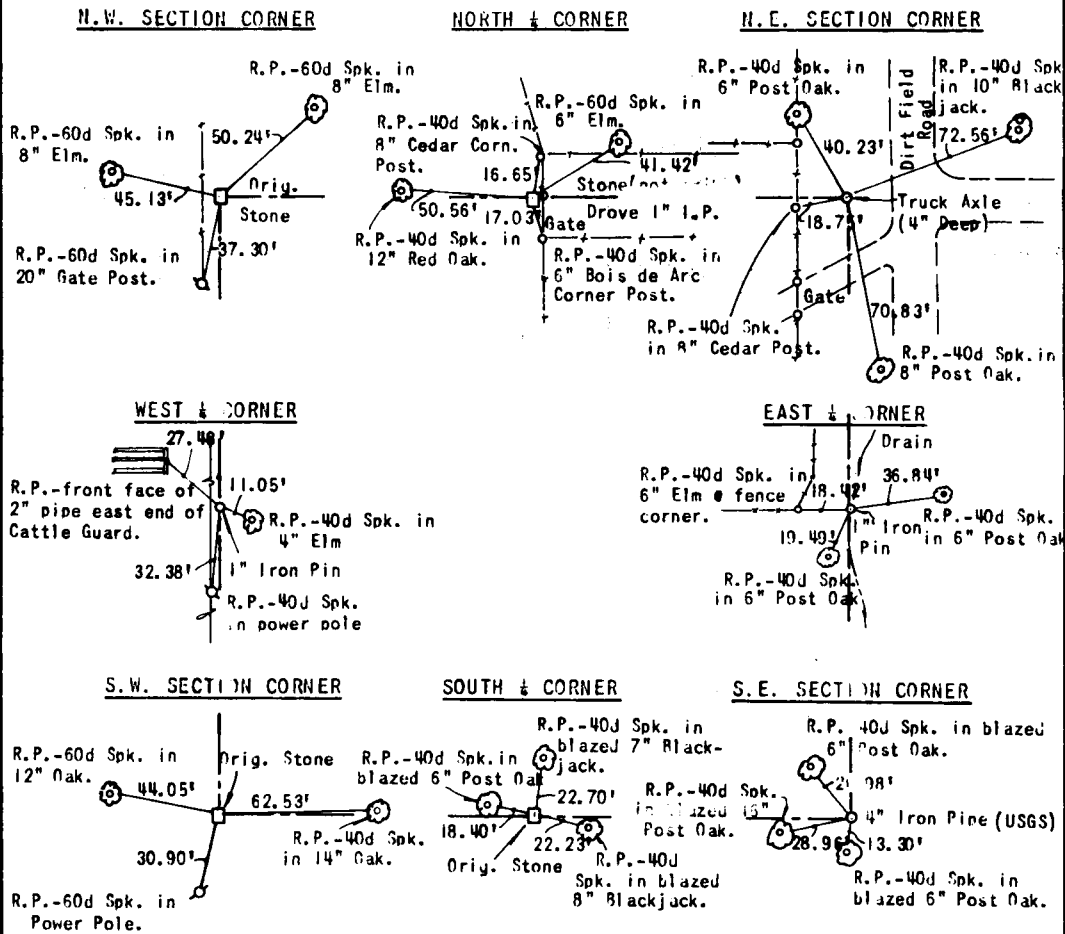
Date: March 15, 1978

SULLIVAN AND GILBERT, INC.
 Consulting Engineers
 Under the supervision of
 U.S. ARMY ENGINEER DISTRICT, TULSA
 CORPS OF ENGINEERS

- LEGEND**
- △ C OF E MON.
 - IRON PIN
 - ORIG. STONE
 - ▲ U.S. GEOLOGICAL TOWNSHIP CORNER


 REGISTERED LAND SURVEYOR L.S. #122

EUFAULA LAKE
SECTION AND QUARTER SECTION
CORNER REFERENCES FOR
SECTION 36, T 7 N, R 16 E, MCINTOSH COUNTY



Scale: 1"=50'
Field Book No. E-1392
Sullivan and Gilbert, Inc.
Date: March 15, 1978